

We ensure a perfect result even
for unusual parts



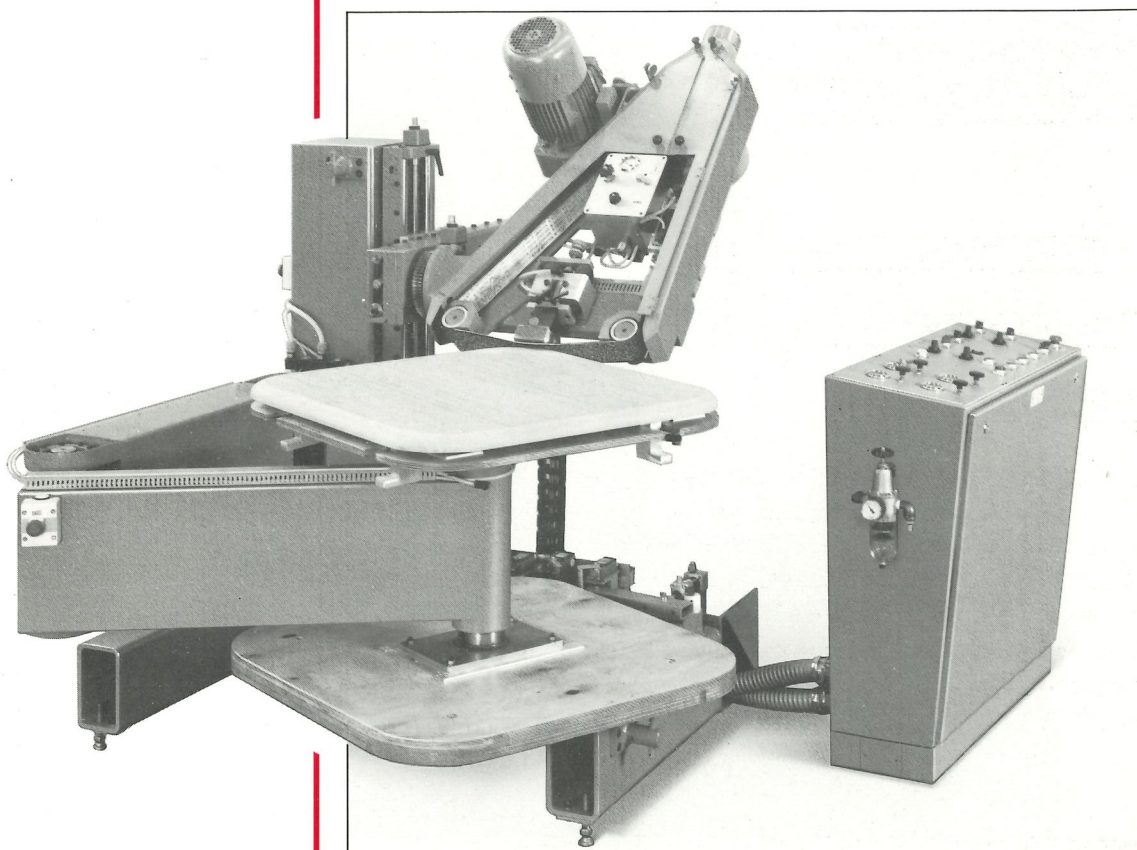
Profile sanding machine
for all-round profiled edges **PMU 2**

Heesemann
Reliability by proven design

We focus on the shape of your work- pieces.

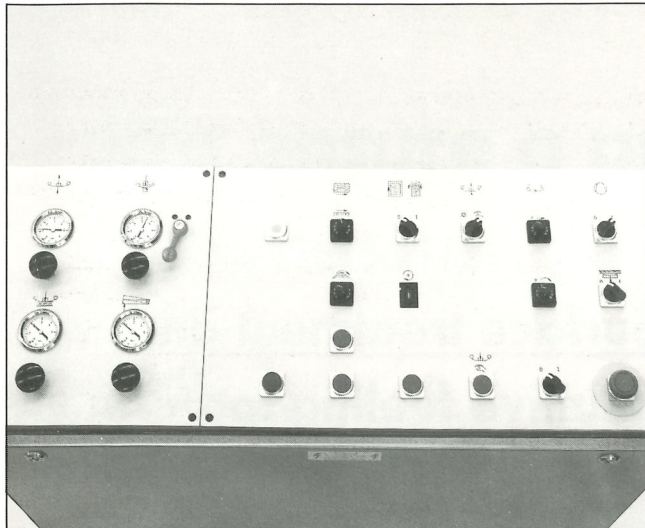
New trends change shapes and designs, but new trends are not always a guarantee for large quantities. Profiled all-round edges on table tops, upholstery furniture frame components or curved furniture carcasses, however, must be sanded prior to lacquering – even if only small quantities are involved.

In the same manner that trends place a demand on you, possible and impossible shapes are a challenge for us to devise solutions: The Heese-mann PMU 2 with a belt sanding unit "M 4" from our profile sanding range.



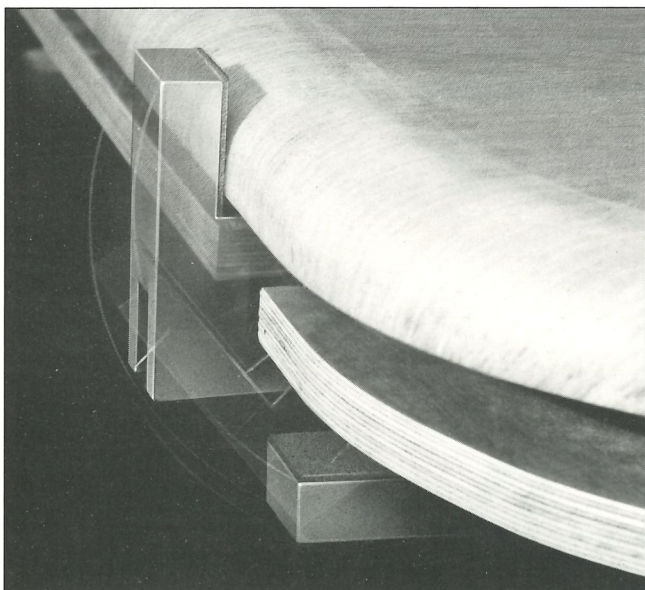
We decrease production time to increase your profit.

Firstly we reduce the space required. The PMU 2 needs little space compared to the workpiece size. The suspension of the wheel and disc driven template and the workpiece is performed on a horizontally moving double joint arm. This technique guarantees a uniform movement at the workpiece periphery. The cutting speed is, automatically adapted to the reduced feed speed in the area of the corner rounding. The infinitely adjustable sanding belt speed is matched to the workpiece shape and is preselectable in the same manner as the number of revolutions. For half round parts the unit can be reversed. This operating mode reduces production time and increases your profit.



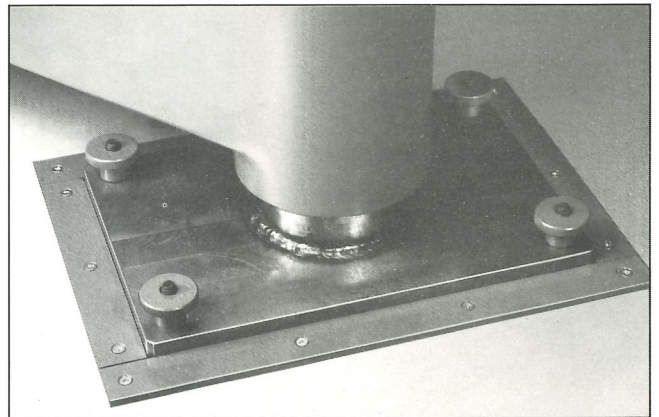
When results are required, nothing must be left to chance.

The PMU 2 can either operate automatically or manually controlled. This permits a targeted access to the automatic sanding cycle, e.g. when sanding joint paper and veneer doubling on parts processed on a membrane press. Due to this possibility we achieve a constant, good result. A further prerequisite is the accurate centering achieved by the centre boring or automatic folding stops. The workpiece is firmly held with a vacuum clamping device.



For a template exchange you don't even need a spanner.

To be more precise, this means loosening the four quick releases, putting the template to the side and inserting the new template. The sanding unit can be just as quickly matched to the new profile shape. The sanding units can be freely set to follow the new profile in an angle range from -45° to $+90^{\circ}$ to the horizontal. A weight balanced drive unit ensures constant belt tension – even with differing unit angular settings.



There is a reason why we work on two levels.

By separating the template and workpiece support the template drive is kept dust free and the sanding unit can reach profile section below the horizontal. The sanding shoe guide system is designed to operate with a low friction, precisely matching the profile. We have thus provided the basis to sand all-round veneered edges with a constant pressure.

PMU 2 – technical data

Motor power:	3.2 kW
Belt speed:	1 – 12 m/s
Swivel range from the horizontal:	90° above 45° below
Sanding belt dimensions:	2,300 x 80 mm
Compressed air connection:	5 bar
Total connected load:	5.5 kW

**Surface treatment and
intuitive feeling form an
entity. We follow this prin-
ciple ...**

... for more than 50 years. A prerequisite for this is a constant dialogue with the user, resulting in an automatic machine concept for high quality surface and edge processing. Heesemann automatic machines operate worldwide as single machines and in production lines.

Our production range for wood, lacquer and foil sanding incorporates conventional and computer controlled

- cross sanding machines
- longitudinal sanding machines
- lacquer and smoothing sanding machines
- belt sanding machines
- surface form sanding machines
- automatic veneer sheet sanding machines
- universal automatic edge and profile sanding machines,
- automatic polishing machines for surfaces and profiles

PMU 2

Heesemann

Karl Heesemann · Maschinenfabrik GmbH & Co KG · P.O. Box 10 05 52 · D-4970 Bad Oeynhausen 1 · Reuterstraße 15
Phone (0 57 31) *2 70 21 · Telex 9 7 24 845 hsm d · Telefax (0 57 31) 35 71