

THIN CUTTING FRAME SAW

High Efficiency
High precision



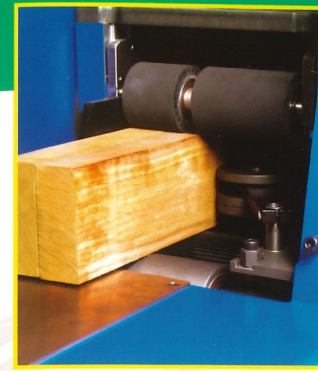
The HOLYTEK F15 Frame Saw is built for outstanding cutting capabilities and reduces material loss to a minimum. It's a highly productive and quality proven machine that gives dependable performance to help you create profits. The G25 Band Saw Blade Sharpener is your Frame Saw partner .

HOLYTEK

F15 THIN CUTTING FRAME SAW

High precision High Efficiency

- Single , two , or multiple wood cutting as desired.
- Reduces material loss to a minimum.
- Extremely fine surface effect.



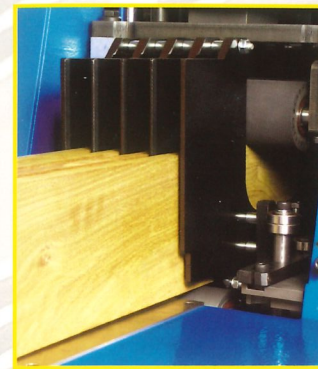
■ GUIDE FENCE AT SIDE

In case the guide fence is mounted at the side, the machine allows for cutting a single wood material.



■ GUIDE FENCE AT CENTER POSITION

In case the guide fence is mounted at the center position, the machine allows for cutting two wood materials at a time for increasing efficiency.



■ MULTIPLE GUIDE FENCE

Upon request, the machine is available to be supplied with several guide fences. Fence sizes can be specified by the customer. The use of multiple guide fences enables the machine to cut several wood materials at a time.

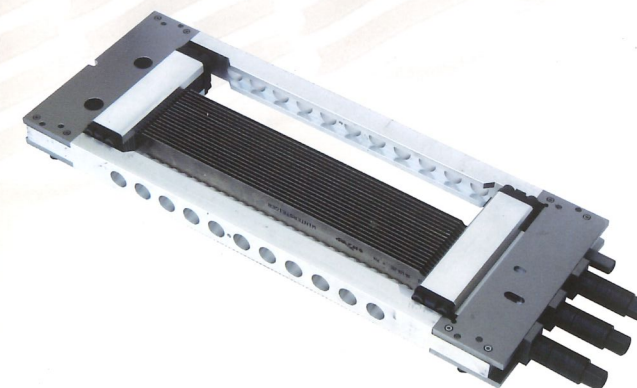
■ CHOICE OF VARIOUS SAWBLADES

- Upon request, the machine can be supplied with A a choice of various steel welded sawblade or T.C.T. sawblades.
- The customer may choose various sawblade thicknesses from 1.1 to 1.4 mm to suit various wood materials.

Choice of various saw frames

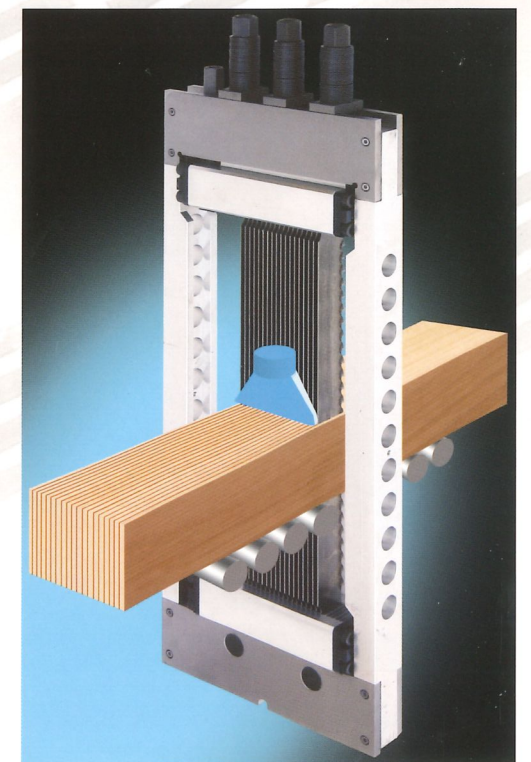
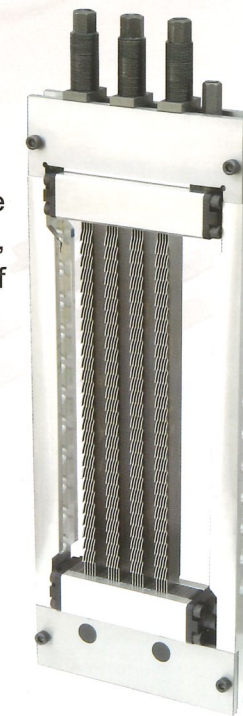
■ APPLICATION PRODUCTS

Thin wood, toys (airplane models), composite flooring, stair plates and venetian blinds, stationery (pencils), sporting goods (surf boards , musical instruments (Guitars).



■ RIGID SAW FRAME

The saw frame is a rigid construction, assuring extremely fine surface effect and high thickness accuracy of cutting.



■ SAWBLADE AIR BLAST

The air blast device provides cooling to the sawblades for extending blades service life. In addition, the device also can remove saw dust built-up in the blade teeth, ensuring high quality cutting at all times.

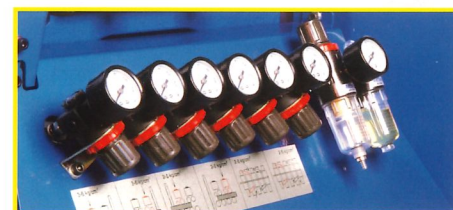
■ STABLE CUTTING

The wood to be cut is supported steadily, ensuring high stability of cutting.



■ MICRO-COMPUTER CONTROL

- The machine is equipped with a PLC control for maximum operation convenience.
- Electronic components and circuit design fully meet CE safety regulations.
- Comprehensive anti-interference protection devices.
- Self-diagnostic functions and warning lamp displays.

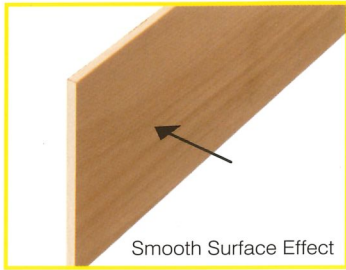


■ CENTRALIZED PRESSURE REGULATIONS

- Each pressure roller is equipped with an independent pressure regulator for individual air pressure adjustment.
- All pressure regulation valves are centralized for convenient adjustment and maintenance.

■ Designed For Profitable Production

The F15 Thin-Cutting Frame Saw from HOLYTEK is designed and engineered to enhance the high efficiency and high accuracy cutting. In addition to provide various cutting modes, the F15 also features great material -cost saving that creates profits for customer. The machine is equipped with a micro- computer control for maximum operational convenience.



Smooth Surface Effect

FINE SURFACE

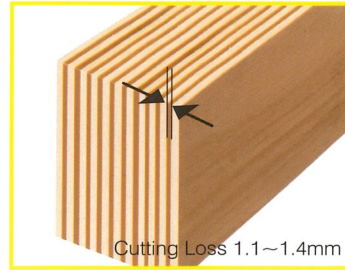
Extremely fine surface effect after cutting which permits direct glue jointing for saving 0.15mm sanding tolerance.



Thickness Accuracy $\pm 0.1\text{mm}$

ACCURATE THICKNESS OF CUT

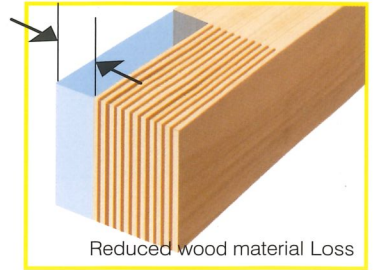
High accuracy thickness of cut is $\pm 0.1\text{mm}$. No gapping problem on the cut surface.



Cutting Loss 1.1~1.4mm

REDUCES MATERIAL LOSS

The frame saw reduces material loss to a minimum. It saves 30% wood material when comparing with that by a conventional machining method.



Reduced wood material Loss

SAVING COST

Wood cutting performed by the frame saw may reduce material loss to a minimum for saving production cost.

G-25 Band Saw Blade Sharpener

A Peripheral Equipment for Frame Saw



*Designed to Maximize Blade Service Life While Minimizing Blade Consumption.

■ SPECIFICATIONS

MODEL	F-15
MOTOR	11 Kw (15 HP)
FEED SPEED	0.3~1.7M/min.
FRAME STROKE	210mm
STROKE NUMBER PER MINUTE	450rpm
HEIGHT RANGE OF CUT	30~200mm
WOOD HEIGHT DIFFERENCE	$\pm 0.5\text{mm}$
WIDTH OF CUT (SIDE GUIDE FENCE)	60~150mm
WIDTH OF CUT (CENTER GUIDE FENCE)	2x30~70mm
WIDTH OF CUT (CHANNEL TYPE)	2~4x20~65mm
MINIMUM BLOCK LENGTH	300mm
SLICE THICKNESS	>2.0mm
CUTTING ACCURACY (UNDER 120mm)	$\pm 0.1\text{mm}$
CUTTING ACCURACY (OVER 120mm)	$\pm 0.15\text{mm}$
CUTTING LOSS	1.1~1.4mm
APPROX SAW BLADE NUMBER	< 22 pc
MAXIMUM SAW BLADE LIFE	4~24 hour
NET WEIGHT	2350 Kg
GROSS WEIGHT	2600 Kg
MACHINE DIMENSIONS (L x W x H)	3600x800x1900 mm
PACKING DIMENSIONS (L x W x H)	2740x1200x2210mm

■ SPECIFICATIONS

MODEL	G-25
MOTOR	11 Kw (15 HP)
BLADE THICKNESS	<2mm
BLADE WIDTH	35-40mm
BLADE LENGTH	Unlimited
TOOTH PITCH	<20mm
TOOTH HEIGHT	<5mm
FRONT RAKE ANGLE	5-15 Degrees
WORKING SPEED	1.4-6.4 Sec/tooth

*All specifications, dimensions and design characteristics shown in this catalog are subject to change without prior notice.

*All specifications, dimensions and design characteristics shown in this catalog are subject to change without prior notice.

HOLYTEK

HOLYTEK INDUSTRIAL CORP.

9F-1, NO. 400, SEC. 1, CHANG PING RD., TAICHUNG, TAIWAN, R.O.C.

TEL: 886-4-2245-2818 (REP.) FAX: 886-4-2243-6928

E-mail: holytek@ms13.hinet.net

http://www.holytek.com.tw