

# Extra Large Size 4 Side Moulder

*For laminated beam and log house  
timber planing, profiling.*

CE



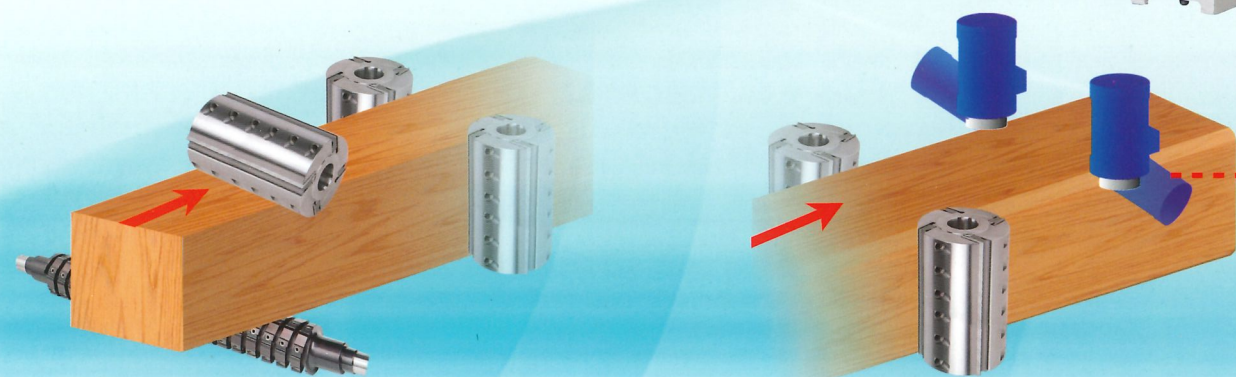
*PS4/500*

The new extra large size 4 side planer/moulder with high-performance functions particularly suitable for planing laminated beams or prefabricated log houses, as well as for any boards or beams of green wood or twisted wood. Max. working width: 500mm x 250mm height, optional 300mm working height available. Inverter control of max. feeding speed up to 40m/min. Digital readout setting of thickness and vertical spindle moving, plus more...

# HOLYTEK

# Heavy-duty Cardanic Transmission Feeding System with Pneumatic Individual Pressure Roller and Powerful Top and Bottom Feeding Roller.

PS4/500



*Channelling units  
are optional*



■ **Infeed Unit and Precision Guide Fence with Table Rollers and Side Pressure Roller Allow Smooth Feeding.**

Precision guide fence with rigid design and heat-treatment for long term use, easy setting-up.



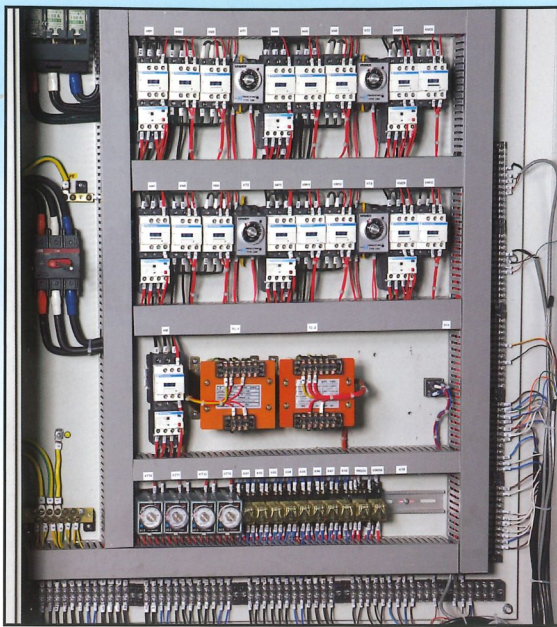
■ **Vertical Spindle Unit and Digital Readout Setting by Motorized Moving.**

All the adjustment for vertical spindle unit with mechanical digital readout and motorized moving by digital setting for left vertical spindle unit.



■ **Heavy-duty Spiral Cutterhead for Bottom Spindle**

The slide way of bottom spiral cutterhead with two ways of TCT tips (30x12x1.5mm) for long term working save the knife grinding and setting time.

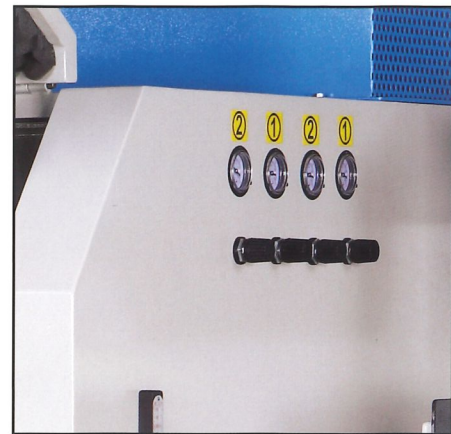


■ **Electrical Control Box (CE version)**



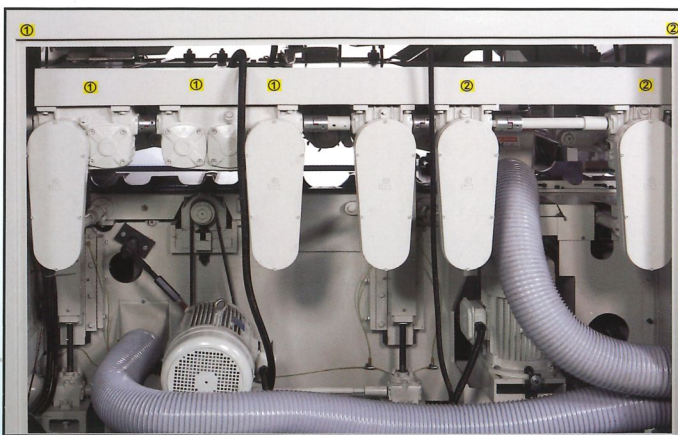
■ **Easy Control and Moveable Type Panel, Digital Readout Setting of Thickness**

Feeding speed by inverter control, varial speed up to 40m/min.



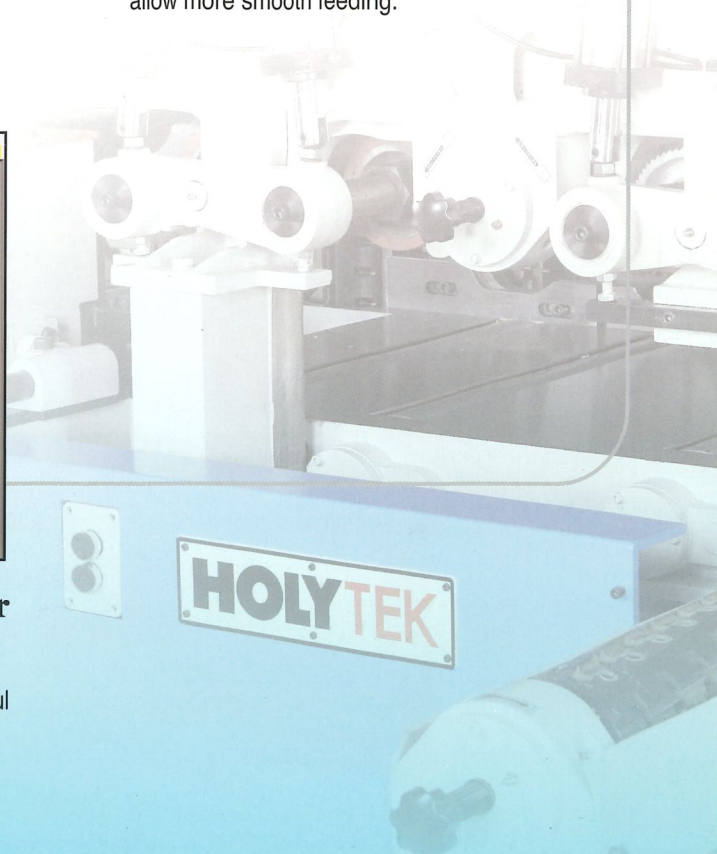
■ **Pneumatic Pressure Gauge**

With different air gauge of pressure roller allow more smooth feeding.



■ **Cardanic Transmision and Gear Reducer System for Feeding Unit**

With 6 sets of upper motorized feeding rollers and 5 sets of powerful bed rollers allow feeding to be performed more easily. (PS4/500)





## Other Design Features:

- Lubrication unit for all moving slides is standard.
- Outfeed roller table (1.5m) is standard.
- All sound-proof enclosure is standard.
- Top profile cutting capacity up to 20mm.
- Heavy and sturdy modular frame.
- Working table at fixed height with motorized upper section, mobile on 4 dovetail slide way, controlled by a high precision reducer.
- Mobile table of the surface planer removal, sliding on prismatic guides same as normal 4 side moulder design guarantee the accuracy.
- Feed rollers controlled by very strong cardan-joints. Individual pressure rollers are easily changed incase any worn-out roller needs changing.

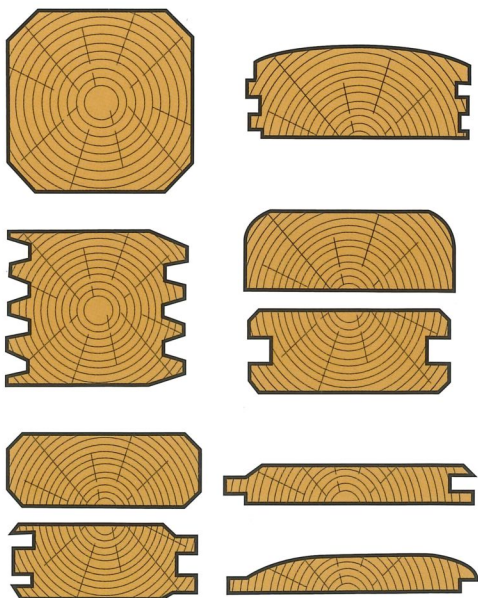


## SPECIFICATIONS

MODEL	PS4/500,750	PS6/500,750
Max. working width x thickness (horizontal)	500(750)x300mm	-ditto-
Max. working width x thickness (vertical)	500(750)x250mm	-ditto-
Mini. working width x thickness	100x20mm	-ditto-
Bottom spindle power	15HP(PS4/750 :20HP)	-ditto-
Top spindle power	20HP(PS4/750 :25HP)	-ditto-
Vertical spindle power	10HPx2(optional:15HPx2)	-ditto-
Feeding power	10HP(optional:15HP)	-ditto-
Feeding speed	5~40m/min.(by Inverter control)	-ditto-
Thickness elevation motor	1HP(PS4/750:2HP)	-ditto-
Chanfering units motor	-	5HPx2
Horizontal cutterhead dia.	φ 125 mm	-ditto-
Max. profiling depth of top spindle	20mm	-ditto-
Max. profiling knife dia. of top spindle	200mm	-ditto-
Vertical spindle dia.	φ 50mm	-ditto-
Max. profiling knife dia. of vertical spindle	200mm	-ditto-
Spindle speed	6000RPM	-ditto-
Table height from floor	900mm	-ditto-
Outfeed roller table	1.5m(L)	-ditto-
Infeed idle roller	2pcs	-ditto-
Dust hood outlet dia.	6"x4pcs	6"x4pcs/5"x2pcs
Machine size	480x220x200cm	540x220x200cm
Packing size	330x220x220cm	390x220x220cm
N.W./G.W.	5000kgs/5500kgs	6000kgs/6800kgs

\*All specifications, dimensions and design characteristics shown in this catalogue are subject to change without notice.

*Allows You to Work with  
Different Profiles!*



## Standard Equipment

- Max. working width x thickness (horizontal) : 500 x 300mm
- Max. working width x thickness (vertical) : 500 x 250mm
- Power feeding motor : 10HP
- Bottom spindle w/heavy-duty spiral cutterhead (30 x 12 x 1.5 mmTCT tips)
- Top spindle w/ serrated cutterhead (6T) for profiling & planning
- Vertical spindle w/ serrated cutterhead (6T) for profiling & planning
- Digital readout setting of thickness standard
- Digital readout setting of left vertical moving standard
- Micro. Adjustment of top profiling knife setting-up
- Slide away of bottom spiral cutterhead, easy change of TCT tips.
- Power top feeding roller : 6 pcs, power bed roller : 5 pcs (PS4/500)

## Optional

- Max. working width x thickness (vertical) : 500 x 300mm
- Chamfering units on the rear of M/C - PS6/500,750
- Optional working width : 750mm.
- Optional bigger power of spindle
- Optional top spindle serrated knife size and gib

# HOLYTEK

**HOLYTEK INDUSTRIAL CORP.**

9F-I, NO. 400, SEC. 1, CHANG PING RD., TAICHUNG, TAIWAN, R.O.C.  
TEL: 886-4-2245-2818 (REP.) FAX: 886-4-2243-6928

E-mail: holytek@ms13.hinet.net  
http://www.holytek.com.tw