

NIMAC
GROUP



NIMAC GROUP

NIMAC GROUP is the continuation and the new generation of **NIKOLAIDIS machines**. In 1977, the company began the production of horizontal beam saws. The continuous effort for the improved of the machines and the reliable service confirmed the company as one of the most important manufactures of beam saws with a remarkable international presence. The gross percentage of exports, more than 80% of the production and the sales at well-known brand furniture industries are indicative of the company's success.



1977



NIMAC GROUP offers a large range of high quality and value priced woodworking machinery for the world marketplace. Taken advantage of its great experience and dedicated at the customer's total care, NIMAC GROUP can offer customised production lines for the particular needs of every customer.





Quality and Technology

Aiming always at the production of high quality and value-priced machines for the world wide marketplace, NIMAC Group continues the modernization of its productive procedure maintaining strict quality standards (ISO 9001). The Technical and Quality department inside the company uses sophisticated CAD software to design and to realize the final product. Continuous and strict tests during the whole manufacturing process guarantee the goal of keeping final product's high quality standards.



Service and spare parts

The excellent technical and telephone support from experienced staff are the main features of the philosophy of the company, which is customer orientated. The Spare parts department ensures prompt shipment of spare parts to secure the smooth operation of machinery.



POST FORMING SERIES

PF 090

Small and smart beam saw for post - soft formed panels

TECHNICAL DATA

Cutting length	890 mm
Cutting height	60 mm
Post forming height up to	45 mm
Saw carriage's linear motion	
Main saw	250 x 3.2 x 30 mm
Scoring saw	250 x 3.3 x 30 mm
Pneumatic stops	2
Main saw's motor power	5.5 Hp
Scoring saw's motor power	2 Hp

OPTIONAL UPON REQUEST

Cutting length	1250 mm
Inverter for cutting speed	5-30 m/min
Extra pneumatic stop	
Digital measuring	



PF 1250 NC

The ideal beam saw for post - soft formed panels

TECHNICAL DATA

Cutting length	1250 mm
Pusher's stroke	4200 mm
Cutting height	65 mm
Post forming up to	50 mm
Automatic pusher with 4 grippers	
Automatic side aligner's stroke	1000 mm
Saw carriage's and pusher's linear motion	
Pusher controlled by AC inverter	5-25 m/min
PLC with touch screen control and memory	100 programs
Saw carriage speed	50 m/min
Magnetic tape for measurement. Accuracy	0.1 mm
Main saw's motor power	5.5 Hp
Scoring saw's motor power	2 Hp
Main saw	250 x 3.2 x 30 mm
Scoring saw	250 x 3.3 x 30 mm

OPTIONAL UPON REQUEST

PC based numerical control with 20" flat screen, Windows XP operating system and cutting optimizer software. The software can optimize up to 15 different panels and 100 different parts. Easy programming of even complex projects cut. Real time graphic of various operation phases. UPS inside the electrical cabinet for the PC's protection	
System for grooving cuts in automatic sequence and automatic blade projection according to the material's height	
Optimizer software for customer's office PC	
Extra gripper	
Main saw motor	7.5 Hp
Diamond main saw	250 x 3.2 x 30 mm
Diamond scoring saw	250 x 3.3 x 30 mm



BEAM SAWS



PLC with touch screen



TEMA 3800 ST

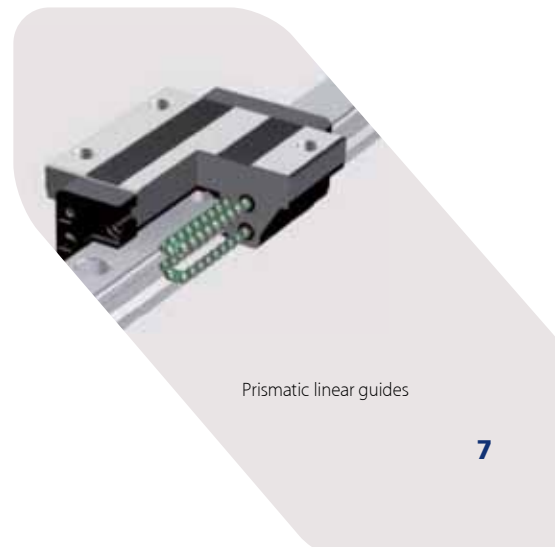
Compact size. Easy handling

TECHNICAL DATA

Cutting length	3780 mm
Pusher's stroke	1870 mm
Main saw's motor power	5.5 Hp
Scoring saw's motor power	2 Hp
Cutting height	65 mm
Saw carriage's and pusher's linear motion	
PLC with touch screen and memory	100 programs
Inverter for cutting speed	5 - 30 m/min
Automatic pusher driven by PLC	
Pusher's speed	0.5 - 20 m/min
Magnetic tape for measurement. Accuracy	0.1 mm
Main saw	300 x 3.2 x 30 mm
Scoring saw	200 x 3.3 x 30 mm
Scoring saw for post forming	250 x 3.3 x 30 mm

OPTIONAL UPON REQUEST

Post forming system



Prismatic linear guides

BEAM SAWS



TEMA 3800 PLUS

The customised beam saw for small and medium size industries.

TECHNICAL DATA

Cutting length	3800 mm
Pusher's stroke	2100 mm
	2500 mm
	3800 mm
Main saw's motor power	7.5 Hp
Scoring saw's motor power	2 Hp
Cutting height	65 mm
Saw carriage's and pusher's linear motion	
PLC with touch screen and memory	100 programs
Inverter for cutting speed	5 - 50 m/min
Automatic pusher	7 Grippers
Pusher's speed	0.5 - 25 m/min
Automatic side aligner's stroke	1250 mm
Magnetic tape for measurement. Accuracy	0.1 mm
Main saw	300 x 3.2 x 30 mm
Scoring saw	200 x 3.3 x 30 mm
Scoring saw for post forming	250 x 3.3 x 30 mm



OPTIONALS



PC CONTROL

PC based numerical control with 20" flat screen, Windows XP operating system and cutting optimizer software. The software can optimize up to 15 different panels and 100 different parts. Easy programming of even complex projects cut. Real time graphic of various operation phases. UPS inside the electrical cabinet for the PC's protection.



System for grooving cuts in automatic sequence



System for cutting windows in panels



Automatic blade projection according to the material's height



Post forming group



Air flotation tables

TEMA 3800 PLUS WITH OPTIONALS



TAWI AB VM180/2.5

Vacum Lifting
System for Panels



TECHNICAL DATA

Vacum lifting system	
Lifting capacity	80 kg
Maximum lifting height	1800 mm
Cover for lifting tube	
Complete vacum system with 4 moving plates	320 x 120 x 475 mm/each
Vacuum head height	1400 x 800 mm
Total bridge height	4 m
Easy and fast way for releasing the vacum plates by the weight	
Cross bar handle for easy dumping of big wights	
Direct outer handle part	
Air tube diameter	52 m
Air tube length	10 m
Standard air filter	
Vacum pump	3 kW 230/400 Volt 50 Hz

BEAM SAWS

ATLAS 75 - ATLAS 95

Cutting edge technology

TECHNICAL DATA

	ATLAS 75	ATLAS 95
Cutting length	3200 mm	3800 mm
	3800 mm	4300 mm
	4300 mm	4300 mm
Pusher's stroke	3200 mm	3800 mm
	3800 mm	4300 mm
	4300 mm	4300 mm
Main saw's motor power	7.5 Hp	10 Hp
Scoring saw's motor power	2 Hp	2 Hp
Cutting height	65 mm	85 mm
Blade projection max	75 mm	95 mm
STD Inverter for cutting speed	5 - 50 m/min	5 - 50 m/min
OPT Brushless motor (SERVO)	0 - 120 m/min	0 - 120 m/min
Pusher	7 Grippers	8 Grippers
STD Pusher's speed with inverter	25 m/min	25 m/min
OPT Brushless motor (SERVO)	50 m/min	50 m/min
Main saw	300 mm	350 mm
Scoring saw	250 mm	300 mm
Front tables	3	3
OPT	4	4

Automatic lubrication for the bearings



STANDARD



PC CONTROL

PC based numerical control with 20" flat screen, Windows XP operating system and cutting optimizer software. The software can optimize up to 15 different panels and 100 different parts. Easy programming of even complex projects cut. Real time graphic of various operation phases. UPS inside the electrical cabinet for the PC's protection.



System for grooving cuts in automatic sequence



System for cutting windows in panels



Automatic blade projection according to the material's height



SAW CARRIAGE

The rigid construction and the hi quality prismatic guides for rising and falling blades provides stability and precision in cutting line.



SLIDING SYSTEM

Rack transmission Operates on rack-pinion system for precise and hi-speed movement. Inverter is on standard version. Max. speed up to 120 m/min by brushless motor on request.



Saw blade adjustment by mechanical indicators.



OPTIONALS

OPTIONAL UPON REQUEST (ATLAS 75 - ATLAS 95)

Air flotation tables

Post forming system

Bar code software and USB label printer

Brushless motor (SERVO) for cutting speed 0-120 m/min
max return speed

Brushless motor (SERVO). Return speed 50 m/min

Quick blade change system

Extra table



LABEL PRINTER

Bar code software
and USB label printer



QUICK BLADE CHANGE SYSTEM

Blade change
Quick and safe
replacement
for the blades by using
only 1 allen key.

EDGE BANDERS

GB/m MANUAL

Manual edge bander with temperature electronic control.
Speed variator

TECHNICAL DATA

Electronic control for the temperature	120° - 220°
In waiting time the temperature adjusts automatically at 120° from 220°	
Single phase motor	0.25 Hp
Voltage	230 V / 50 Hz
Max panel thickness	50 mm
Tape thickness	0.4 - 3 mm
Adjustable feeding speed	1 - 4 m/min
Glue tank capacity	150 ml
Net weight	8 kg
Complete weight with accessories and wooden box	28 kg



The machine is complete with:

- Support Base of machine
- Kit of vacuum for keeping the weight
- Kit for cutting edge for straight panels
- Kit for cutting curved panels



MICRO 2

Small size machine. Big expectations.

TECHNICAL DATA

Edge thickness	0.4 - 2.0 mm
Max thickness of panel	40 mm
Min thickness of panel	8 mm
End trim station with a couple of disks and a hi-frequency motor	0.27 kW
Trimming station with 2 hi-frequency motors	0.27 kW/ each
External dimensions	1910x1000x1190mm
Digital control. Pieces counter. Alarm indicator	
Min width of panel	75 mm
Max width of panel	120 mm
Feeding speed	5.5 m/min
Total electric power	2.5 kW
Total weight	440 kg



EDGE BANDERS

MICRO 2P

The smallest size edge bander with premilling group

TECHNICAL DATA

Edge Thickness	0.4 - 2.0 mm
Max thickness of panel	40 mm
Min thickness of panel	8 mm
Pre milling group with 2 motors	1.1 - 0.73 kW
End trim station with a couple of disks and a hi-frequency motor	0.27 kW
Trimming station with 2 hi-frequency motors	0.27 kW/ each
External dimensions	2400x1000x1190mm
Digital control. Pieces counter. Alarm indicator	
Min width of panel	75 mm
Max width of panel	120 mm
Feeding speed	5.5 m/min
Total electric power	4.5 kW
Total weight	530 kg



COMBI 6.2

The ergonomic and innovative range which guarantees high quality in straight panels in low cost.

TECHNICAL DATA

Edge Thickness	0.4 - 3.0 mm
and solid wood up to	5 mm
Max panel thickness	60 mm
Min panel thickness	8 mm
Max panel width	75 mm
Min panel length	120 mm
Feeding speeds	9-14 m/min
End trim station with tilting motors	2 x 0.27 kW
Trimming station with 2 hi-frequency motors	0.27 kW / each
PVC scrapers with radius	2 or 3 mm
Buffing group with 2 tilting hi-frequency motors	0.55 kW / each
External dimensions	3300x1800x1580mm
Total electric power	5.5 kW
Total weight	850 kg



TRADITIONAL MACHINES

S 30

Panel saw with tilting blade



TECHNICAL DATA

Table dimensions	285 x 3000 mm
Cutting length with scoring saw	3080 mm
Weight	580 kg
Diameter of cutting saw (standard)	315 mm
Cutting height at 90°	102 mm
Cutting height at 45°	72 mm
Diameter of scoring saw	120 mm
Diameter of cutting saw (optional)	350 mm
Cutting height at 90°	118 mm
Cutting height at 45°	80 mm
Diameter of scoring saw	120 mm NB
Tilting saw blade	0°-45°
Cutting Length between of cutting line and parallel fence	1050 mm
Spindle rotation speed	4000 rpm
Motor power	5.5 Hp (kw4)

The machine is equipped with:

Scoring saw with independ motor
Sliding table of aluminium

T 22

Spindle moulder

TECHNICAL DATA

Table dimensions	1125 x 670 mm
Working table dimensions:	
Useful working height shaft 30-35 mm	140 mm
Useful working height shaft 40-50 mm	160 mm
Shaft speed	
Motor power	7.5 Hp (5.5 kW)
Net weight	420 kg

The machine is complete with:

Protection fence for the spindle (diam. max usefull 260 mm)
Rotation fence for the spindle
Protection wood working
Led indicator for the spindle's speed
Aspiration hole diam. 120 mm



FOUR SIDE MOULDERS

RAMBO 180 / 4

4 Spindles

Finished work piece min-max 16 - 180 mm

RAMBO 230 / 4

4 spindles

Finished work piece min-max 16 - 230 mm



TECHNICAL DATA

Finished Workpiece max. width	180 - 230 mm
Finished workpiece min. width	16 - 18 mm
Finished workpiece max. thickness	120 mm
Finished workpiece min. thickness	7 mm
Feeding speed	6 - 12mm
Pre-machined workpiece min. length:	
Single workpiece feeding	430 mm
Serial feeding	250 - 280 - 350 mm
Spindle rotation	6000 rpm
Diameter of first spindle	120 mm
Min. diameter of 2nd, 3rd, 4th, 5th spindle	180 mm
Horizontal spindles operating length	190 - 240 mm
Vertical spindles operating length	130 mm
5th spindle operating length	190 mm
5th spindle rotation angle	0 - 360°
Feeding rollers diameter	120 - 130 mm
Feeding table length	1700 mm
Table height from the floor	900 mm
Table and fence adjustment fence	10 mm
Horizontal spindles motor power 1st & 4th motor	7.5 Hp
Vertical spindles motor power 2nd & 3rd motor	10 Hp
Universal motor 5th	5.5 Hp
Feeding motor power	1.1 Hp
Total installed power	27 - 32 Hp



RAMBO 180 / 5

5 Spindles (4+1 universal)

Finished work piece min-max 16 - 180 mm

RAMBO 230 / 5

5 spindles(4+1 universal).

Finished work piece min-max 16 - 230 mm



HYDRAULIQUE PRESSES



HYP 202 COLD

TECHNICAL DATA

Table dimensions	2400 x 1200 mm
Total thrust	T20 ton
Pistons	2 x 80 mm
Stroke	400 mm
Pressure	100 bar
Motor power	1.5 kW
Weight	2000 kg



HYP 256 COLD - 256 HOT

TECHNICAL DATA

Table dimensions	2500 x 1300 mm	2500 x 1300 mm
Total thrust	T90 ton	T90 ton
Pistons	6 x 80 mm	6 x 80 mm
Stroke	400 mm	400 mm
Pressure	160 bar	160 bar
Motor power	2.2 kW	2.2 kW
Total power		21 kW
Weight	3500 kg	3500 kg

STANDARD CONFIGURATION FOR HYDRAULIC PRESSES:

- Digital thermometer
- Double boiler. 2 speeds of pressure pumps
- Electric valve for opening table
- Electric alarm for working cycle
- Aluminum covered patterns
- Perimetral emergency cable
- Special device for extra table
- Automatic recover for pressure lost
- Pressing time setting and electric display

OPTIONALS

- Second-middle table (256)-(306)-(308)-(358)
- Oil-heating
- Wood heating boiler
- Automatic opening for all hot presses

HYP 306 COLD - 306 HOT

TECHNICAL DATA

Table dimensions	3000 x 1300 mm	3000 x 1300 mm
Total thrust	T100 ton	T100 ton
Pistons	6 x 80 mm	6 x 80 mm
Stroke	400 mm	400 mm
Pressure	180 bar	180 bar
Motor power	2.2 kW	2.2 kW
Total power		21 kW
Weight	4100 kg	4100 kg



HYP 308 HOT - 358 HOT

TECHNICAL DATA

Table dimensions	3000 x 1300 mm	3500 x 1300 mm
Total thrust	T110 ton	T110 ton
Pistons	8 x 80 mm	8 x 80 mm
Stroke	400 mm	400 mm
Pressure	180 bar	180 bar
Motor power	5.5 kW	5.5 kW
Total power	26.5 kW	26.5 kW
Weight	4500 kg	5000 kg

SPECIAL PRESSES



◀ HYP CU220

Special press for curved pieces

TECHNICAL DATA

Useful dimensions	2200 x 1100 mm
Cylinders	4 x 100 mm
Tables opening	1500 mm
Useful pressing opening	700 mm
Total thrust	70 ton
Double energize cylinders	
Working on a granular system in 4 colons	
Total weight	2500 kg
Usefull dimensions under order	



◀ V250

Vacuum veneering press

TECHNICAL DATA

Working dimensions	2500 x 1200 mm
External dimensions	2700 x 1800 x 1600 mm
Pressure	8 bar
Max working thickness	350 mm
Max. operation temperature	100° C
Pump (max consumption)	0.75 - 0.75 (ventilator)
Heating (max consumption)	12 kW
Timers for working cycle	2
Pneumatic cabin opening	
Total weight	800 kg



◀ KUF-304

Automatic frame clamp with single bar

TECHNICAL DATA

Useful working length	3000 mm
Useful working width	1600 mm
Pistons vertical stroke	2 x 1000 (100) mm
Pistons horizontal stroke	2 x 1300 (50) mm
Thrust pressure for each vertical cylinder	3500 kg
Thrust pressure for each horizontal cylinder	9000 kg
Motor power	1.5 kW
Weight	1500 kg
Counters for vertical and horizontal pressure	2
Start up by means of manual control on keyboard	



◀ AS-12

Cabinet assembly clamp

TECHNICAL DATA

Working dimensions	2600 x 1300 mm
12 cylinders	6 bar (Ø 80 mm)
Manual controls on keyboard for vertical and horizontal pressure	2
Manual controls on keyboard for vertical and horizontal pressure	2
Total weight	800 kg
External dimensions	3360 x 2200 x 1000 mm

PAINTING SYSTEMS

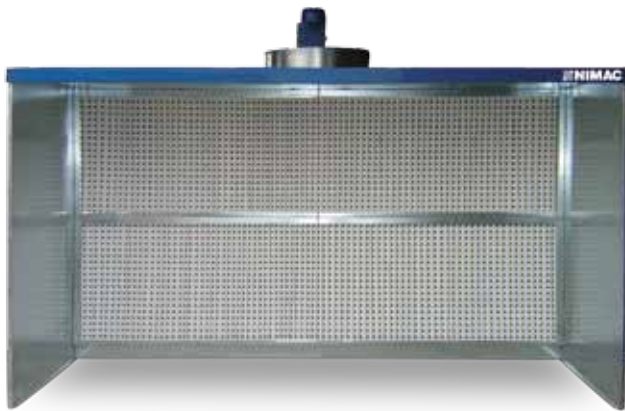


WORKER

Self-cleaning sanding bench with a system using compressed air jets to clean the pocket

TECHNICAL DATA

Automatic- independent system	
Useful dimensions	2000 x 1000 mm 2500 x 1250 mm
Inside filters	
Belt moving-silent aspiration motor	
Heating recycling	
Easy way to exit the dash	

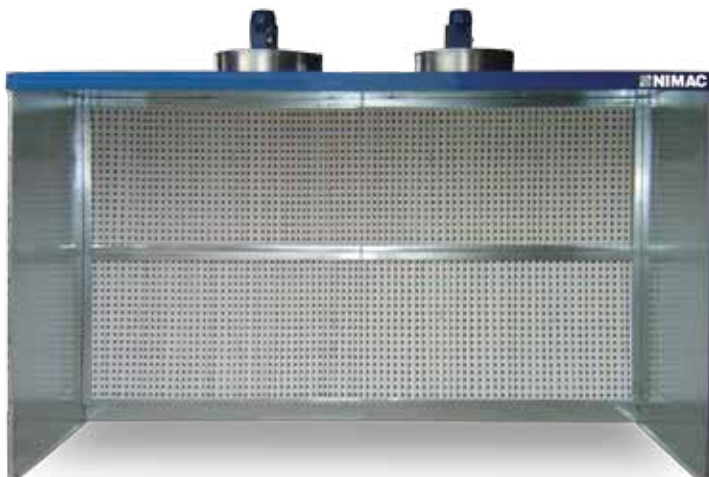


ECO 300

Painting cabin

TECHNICAL DATA

Useful working length	3000 mm
Useful working width	2000 mm
Useful working height	2000 mm
Motor power	1 x 4 Hp
External dimensions	3030 x 2030 x 2800 mm
Weight	350 kg



ECO 400

Painting cabin

TECHNICAL DATA

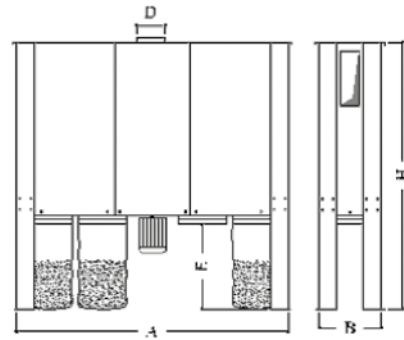
Useful working length	4000 mm
Useful working width	2000 mm
Useful working height	2000 mm
Motor power	2 x 2 Hp
External dimensions	4030 x 2030 x 2800 mm
Weight	380 kg

ASPIRATION SYSTEMS



ASPIRATORS GF

Aspirating and filtering the wood chips by any wood processing without any dangerous effects



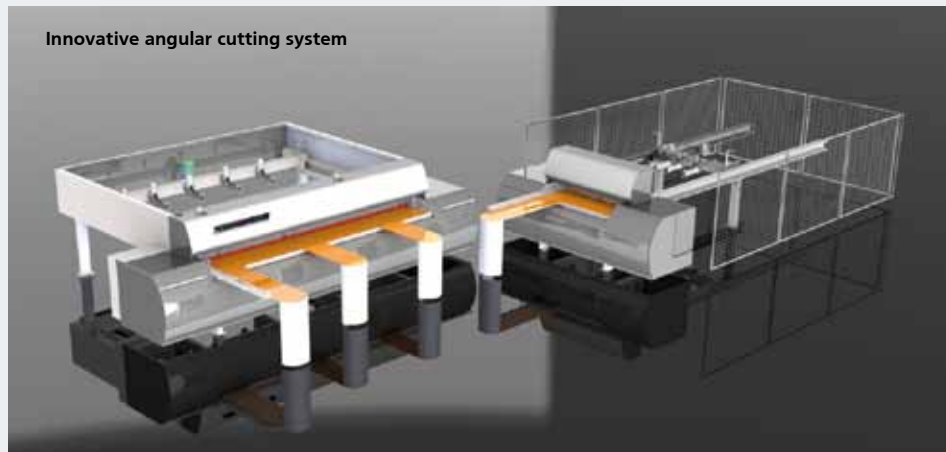
TECHNICAL DATA

TYPE	2 bags	3 bags	4 bags	5 bags
Dimensions A x B x H	1.650 x 670 x 2.920 mm	2.250 x 670 x 2.920	2.850 x 670 x 2.920 mm	3.450 x 670 x 2.920 mm
Motor	3phase - B5 - 2P	3phase - B5 - 2P	3phase - B5 - 2P	3phase - B5 - 2P
Noise level	79 dB(A)	81 dB(A)	82 dB(A) 85 dB(A)	
Motor power	3 Hp (2.2 kW)	4 Hp (3 kW)	5.5 Hp (4 kW)	7.5 Hp (5.5 kW)
Aspiration (D)	Ø 250 mm	Ø 280 mm	Ø 300 mm	Ø 320 mm
Internal noise protection	including	including	including	including
Aspiration tube	N.8 Ø 200 mm	N.12 Ø 200 mm	N.16 Ø 200 mm	N.20 Ø 200 mm
filters	H=1.620 mm	H=1.620 mm	H=1.620 mm	H=1.620 mm
Bag's diameter	N.2 Ø 500 mm	N.3 Ø 500 mm	N.4 Ø 500 mm	N.5 Ø 500 mm
Bag's height For collection(E)	920 mm	920 mm	920 mm	920 mm
Covering panel	including	including	including	including
Simple magnetothermic selector in a box				
Protection cabin for motor				

Trust NIMAC GROUP for integrated industrial solutions!



Innovative angular cutting system





FACTORY - SHOWROOM
www.nimacgroup.eu • info@nimacgroup.eu