

oikos

6-axis machining centre for beams
and wood modular wall elements

oikos

6-axis machining centre for beams and wood modular wall elements.

6-axis machining centre, optimal technological solution for machining wooden structural beams and wood modular wall elements. OIKOS with its highly innovative devices can meet any demand from the constantly evolving market.

- **HIGHEST FLEXIBILITY**

Any machining operation on all faces without revolving the pieces thanks to the innovative structure with 6-axis architecture.

- **GREATER PRECISION**

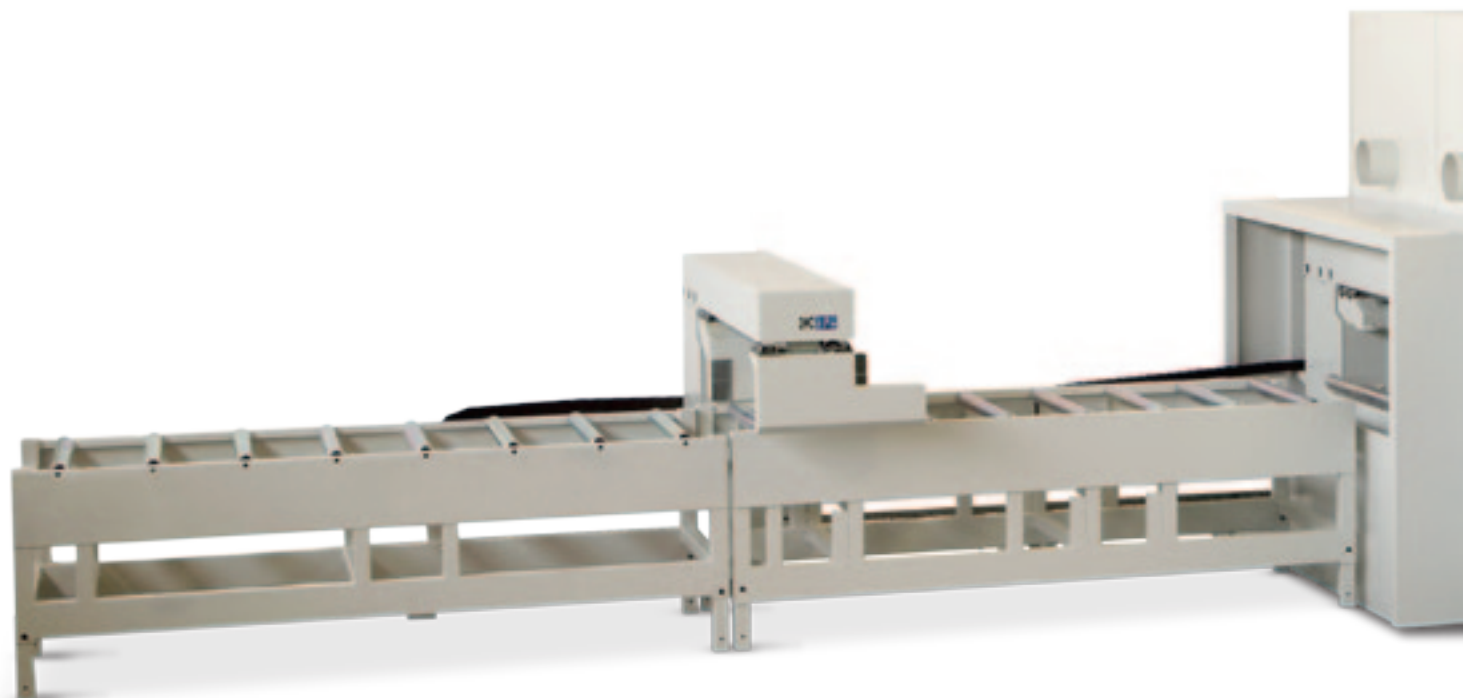
Quick and easy installation of beams and walls without any adjustment on site, the machining unit always ensures maximum precision.

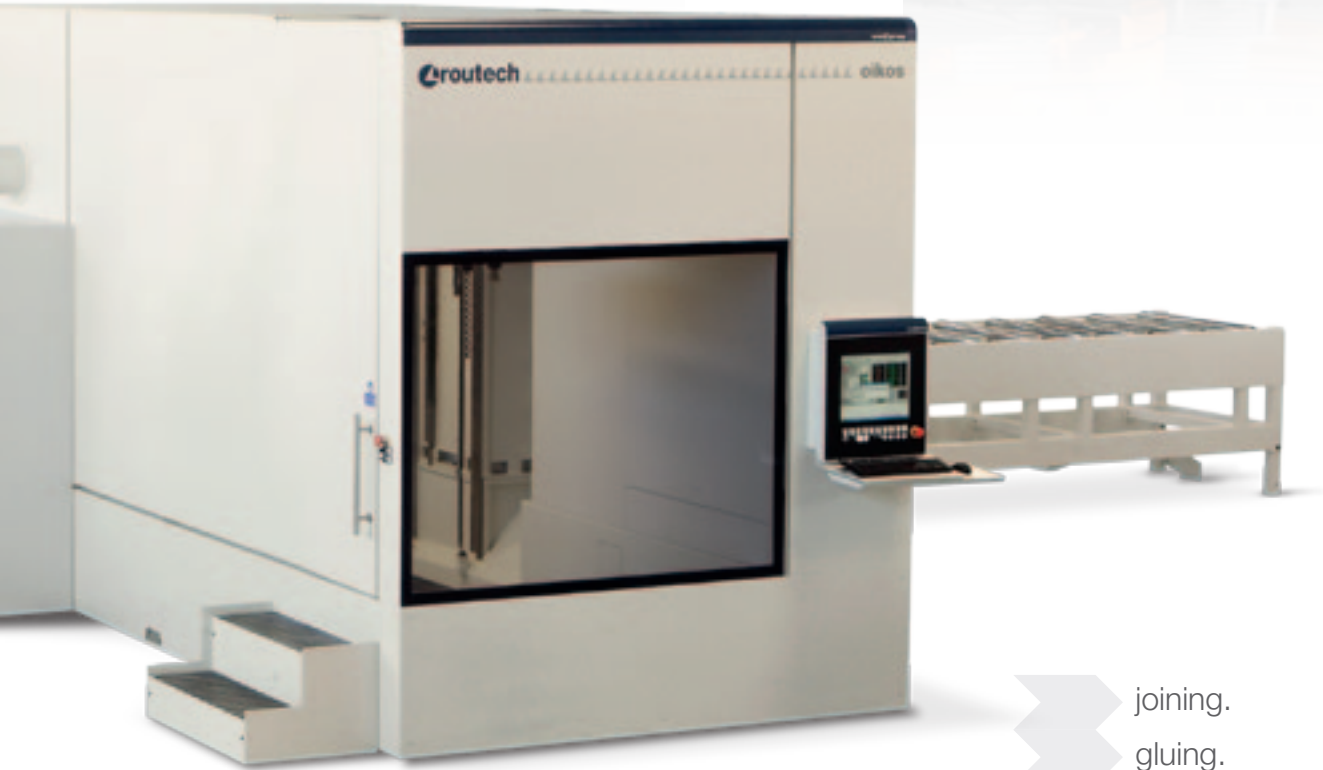
- **EASE OF USE**

Programming and use of the machine with the QuickLink software is simple and intuitive for everyone; designed and developed by Routech, allows full integration with the most popular industry CAD/CAM software.

- **PRODUCTIVITY WITHOUT COMPROMISE**

Sequential production of pieces different one from another is extremely rapid, no setup required and rapid tool change.





- ▶ joining.
- ▶ gluing.
- ▶ pressing.
- ▶ planing.
- ▶ **cnc machining.**
- ▶ impregnation.

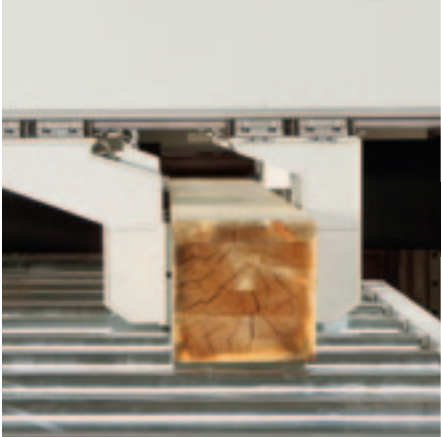
oikos

technological advantages



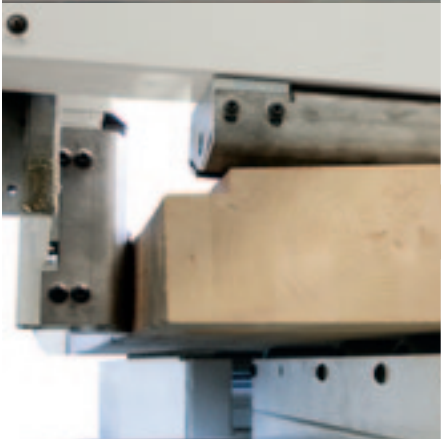
INNOVATIVE 6-AXIS ARCHITECTURE

6 interpolating axes with telescopic Y axis provide the machine with maximum precision and reduced dimensions.



INNOVATIVE DRIVE SYSTEM

two motorised clamps with synchronised drive which ensure beam advancement with extreme precision, without interruption.



OPTIMAL GRIP IN ALL CONDITIONS

numerically controlled horizontal and vertical pressers which are automatically adjusted to the section of the beam and “guide” it in the machining area.



oikos

machining unit



The powerful electrospindle with HSK 63 E attachment always provides the best finish according to the type of tool used.



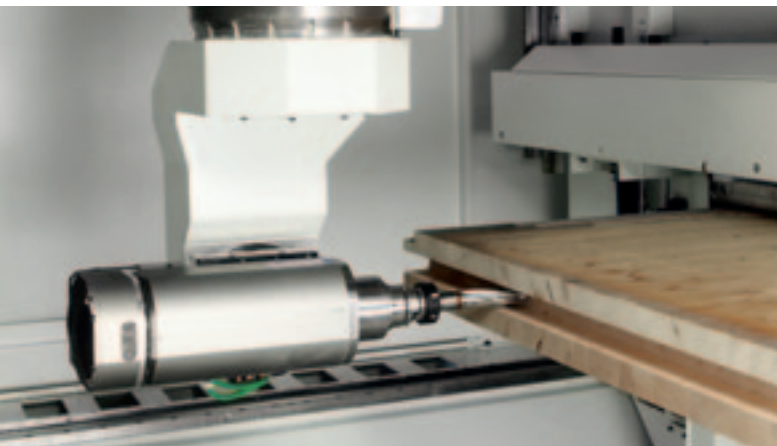
6-axis machining unit specially designed to execute all machining operations necessary for the production of beams and wood modular wall parts at full speed.



Possibility of using blades of up to 800 mm in diameter for cutting large sections.



Beams and wall units with up to 1250x300mm section with machining operations on all faces are machined in a single positioning without the need for revolving or repositioning. OIKOS, thanks to the sixth axis, also permits unconstrained machining on the lower face: greater precision, greater productivity and no operator intervention.



Can be oriented in any direction, routing, boring and profiling can be carried out with the same tool in any position.



Magazines with up to 11 positions to always have on board all the tools necessary to complete the machining operations. The upper position can accommodate an 800 mm diameter blade while the lower position can house special groups such as the angular head with mortise chain.

oikos

feeding system and software





Two motorised clamps, one in input and one in output, ensure beam advancement in any situation. From the loading to the machining area to unloading, beam advancement is never interrupted thanks to the synchronised movement of the clamps.



QuickLink is the software developed by Rotech allowing Oikos to interface with the best sector CAD software on the market. With just a few clicks you can switch from importing BTL files to execution of the piece on the machine. QuickLink gets all the information from the CAD software which designed the structure and automatically creates each individual program. Also available to the operator are a series of simple functions to facilitate customisation of elements to be produced.

The simulation station permits reproduction on a PC of the real machine program operating conditions to verify and eliminate any collisions and calculate the actual time required to make the pieces.

 **scm**
 **minimax**
 **scm tecmatic**

 **scm**

 **routech**

 **celaschi**

 **dmc**

 **superfici**

 **sergiani**

 **gabbiani**

 **morbidelli**

 **mahros**

 **stefani**

 **cpc**

 **sag**

 **scmgroup**
engineering

 **delmac**
engineering

 **scmfonderie**

 **steelmec**

 **hiteco**

 **es**

 **csr**

 **CMS Cms**
wood technology

 **CMS Cms**
advanced materials technology

 **CMS Brembana**
stone technology

 **CMS Brembana**
glass technology

 **CMS CmsPlast**
plastic technology

 **CMS Tecnocut**
waterjet technology

 **CMS Balestrini**

| **1**
large industrial
group
/

| **18**
production
sites
/

| **29**
specialist
brands
/

| **21**
foreign branches
/

| more than **50**
years
in business
/

| **70%**
exports
/

| **350**
agents
and dealers
/

| **365**
registered patents
/

| **500**
support
technicians
/

| **3.000**
square metre
showroom
/

| **10.000**
classic and
professional
machines made per
year
/

| **240.000**
square metres
of production
space
/



www.scmgroup.com

passion**technology**performance

scm  **group**



SCM GROUP SPA - SCM - Via Casale, 450 - 47826 Villa Verucchio (RN) - Italy
Tel. +39/0541/674111 - Fax +39/0541/674235 - www.scmgroup.com - housing@scmgroup.com



00L0083687H