

Record 100 AL



CNC machining centre with compact dimensions



3-axis machining head complete in all its functions

- 8.5 kW 24,000 rpm electro-spindle
- HSK 63F tool taper
- Vector rotary axes
- 11 independent spindle drilling unit with integrated sawblade and adjustable speed

Vector rotary axes

for routings, sawings and drillings on tilted axes using angle drive heads



Pic. 1

Rapid 12

automatic tool changer with 12 positions in order to carry out various profiles in one working cycle.



Pic. 2



Multi-function aluminium worktable

A solid base for any component clamping requirement: Versatile in single component clamping, thanks to the wide range of MPS suction cups. Ideal for aspiration clamping because it ensures high vacuum capacity, constant in each worktable area-

TVN bar and suction cup worktable

TVN worktable enables fast machining changeover :

- All the suction cups can be re-positioned, added or taken off if needed .
- Studied to meet many clamping needs, TVN worktable is the ideal

solution for the manufacturers of doors, windows, stairs, solid wood furniture, tops, tables .

Pic. 3



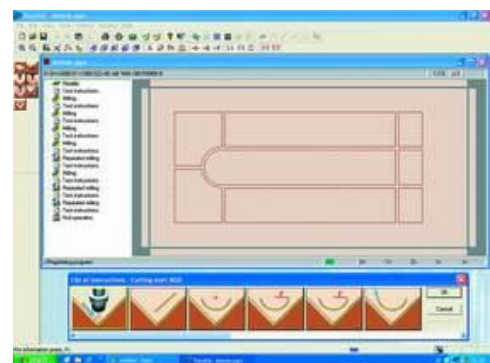
Pic. 4



Pic. 5

Xilog operator interface

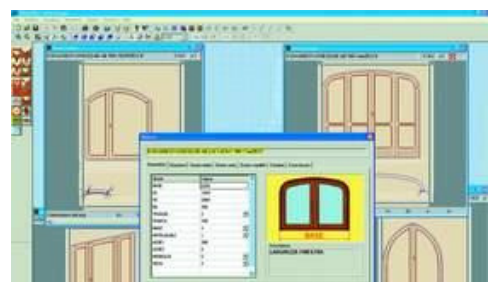
- Generation of programs using an Editor with graphical icons
- Mode-guided, graphics or ISO programming.
- Easy integration with CAD-Cam packages by direct importing of DXF
- Guiding the operator loading tool parameters handled by the software for tool cycle optimisation.



Pic. 6

Doors and windows Xilog Plus

- Handling machine functions
- Generation of programs using an Editor with graphical icons
- Mode-guided, graphics or



- ISO programming.
- Easy integration with CAD-Cam packages by direct importing of DXF
 - Guiding the operator loading tool parameters handled by the software for tool cycle optimisation.

Pic. 7

CNC and OFFICE PC. Handled by PC with a Windows interface.

- High-power processing and ease-of-use.
- Internal company network connections
- Adding data through USB with memory key (included).



Pic. 8

Technical specifications

Axes speed	X = 60 Y = 45 Z = 30m/min
Electro-spindle power	8.5 kW - 24.000 rpm
Tool capacity	12 positions on board
Drilling unit tool	11 independent spindles
from 2.000 to 6.000 rpm	
Sawing blade	diam 120 mm
from 3500 to 7000 rpm	
Vacuum capacity	250 m3/h