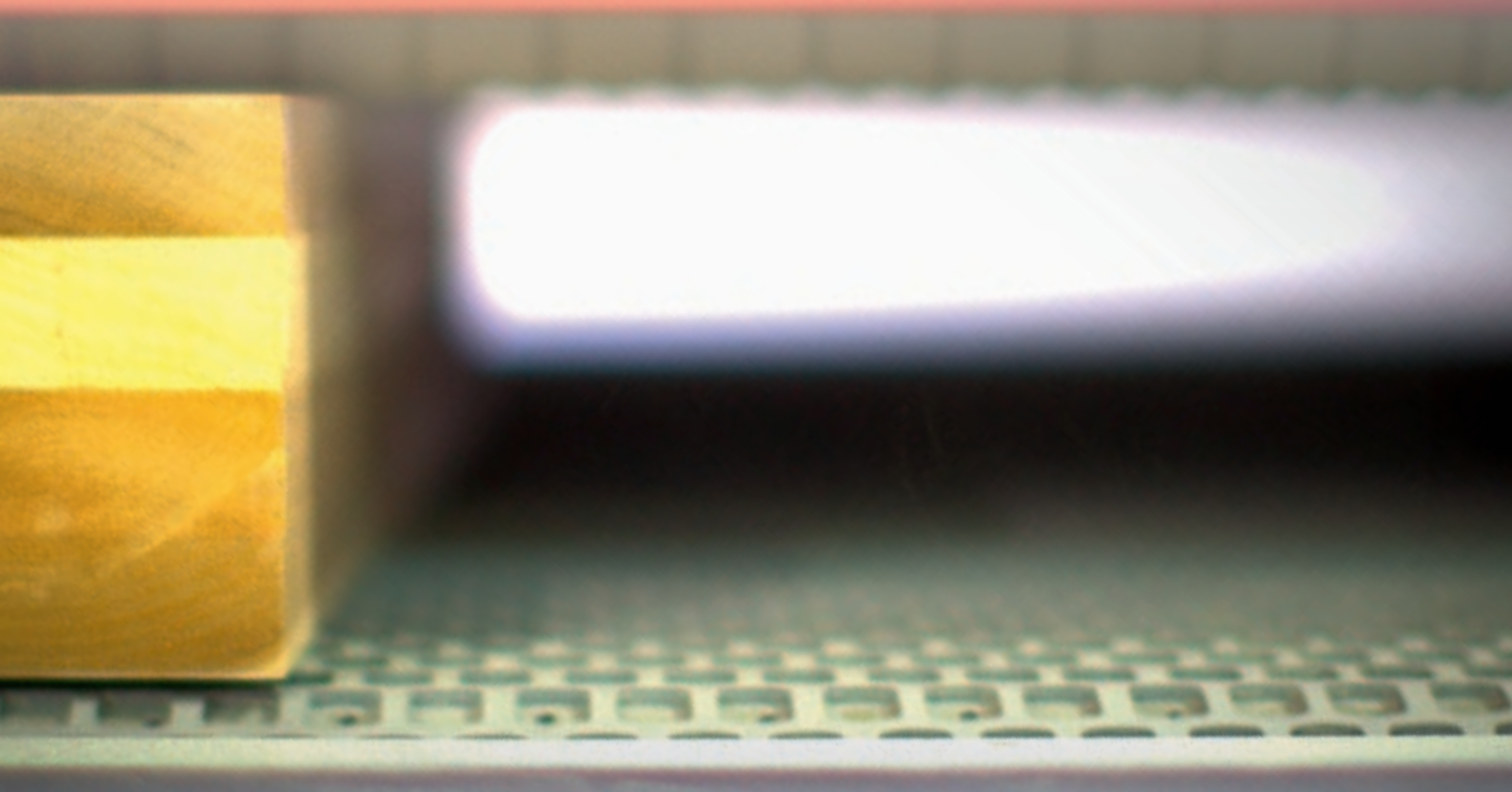


# NAR ROW

FINISHING CENTRE



# THE LINE SOLUTION FOR REDUCED PROFILES



## THE MARKET EXPECTS

the possibility of handling orders for specific machining operations, most often requested in the building and doors and windows industries, with guaranteed delivery times and high quality standards.

## BIESSE RESPONDS

with **technology solutions** that can be customised depending on manufacturing requirements and deliver high product quality without compromising productivity. **Narrow** is the finishing centre designed for big industry, and allows for the machining of long, narrow pieces (skirting, wood flooring, strips, frames, building beams, windows). It is the ideal solution for line production and for high-quality specific machining operations.



# NARROW

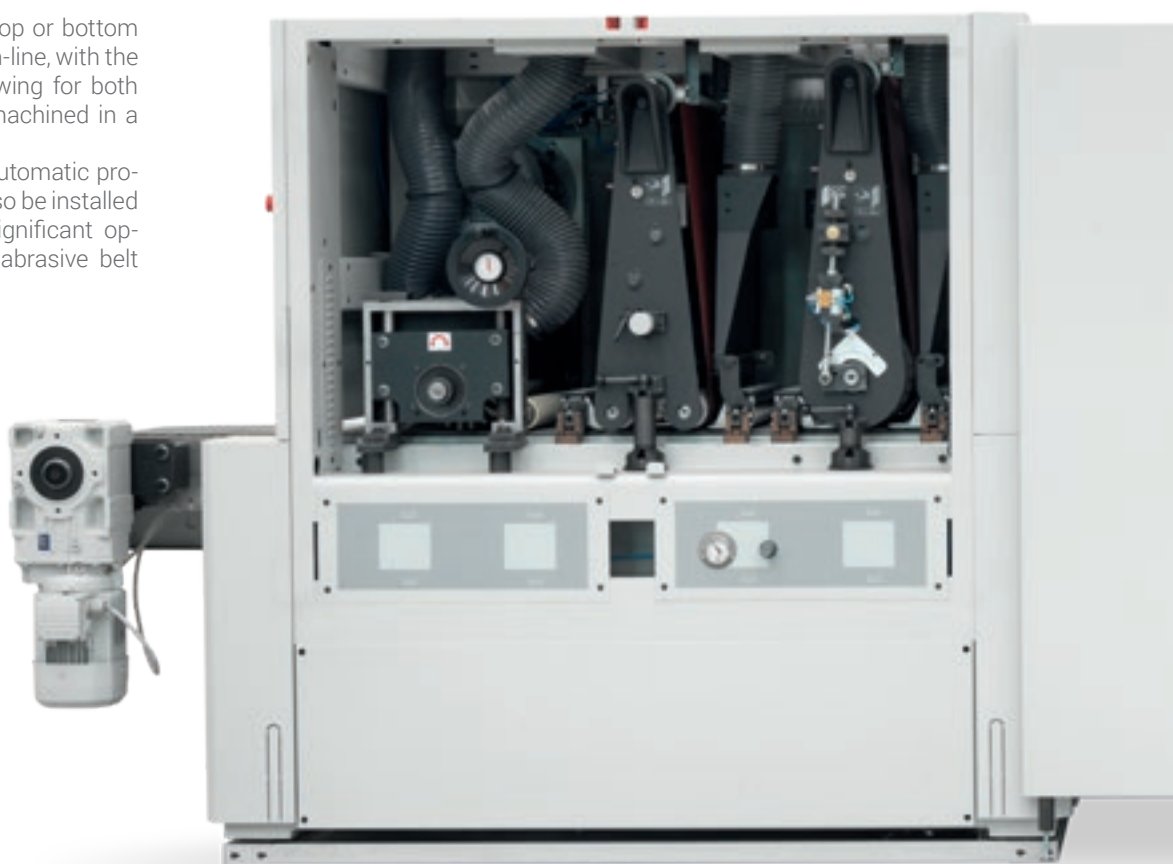
- ✓ THIS MODULAR SOLUTION IS HIGHLY CUSTOMISABLE, IN ACCORDANCE WITH THE NEEDS OF EACH INDIVIDUAL CUSTOMER
- ✓ MACHINING OPERATIONS ARE OPTIMISED, WITH THE OPTION OF MACHINING THE TOP AND BOTTOM OF TWO PANELS SIMULTANEOUSLY
- ✓ HIGH PRODUCTIVITY FOR LINE ENVIRONMENTS
- ✓ MAXIMUM FINISH QUALITY

# HIGHLY CUSTOMISABLE MODULAR SOLUTION

Narrow is a compact modular solution which can be configured to machining operation requirements.

It can be composed of a top or bottom machine, or incorporated in-line, with the two machines joined, allowing for both sides of the panel to be machined in a single step.

When inserted within an automatic production line, Narrow can also be installed on shifting tracks, with significant optimisation with regard to abrasive belt use.



Buffing roller.

Abrasive brush.

Brushing brush.

Cleaning brush.

A comprehensive range of units can be combined and repeated within the machine and can occupy 4 upper or lower positions, delivering a vastly superior quality across all panel finish types when compared to the market standard.



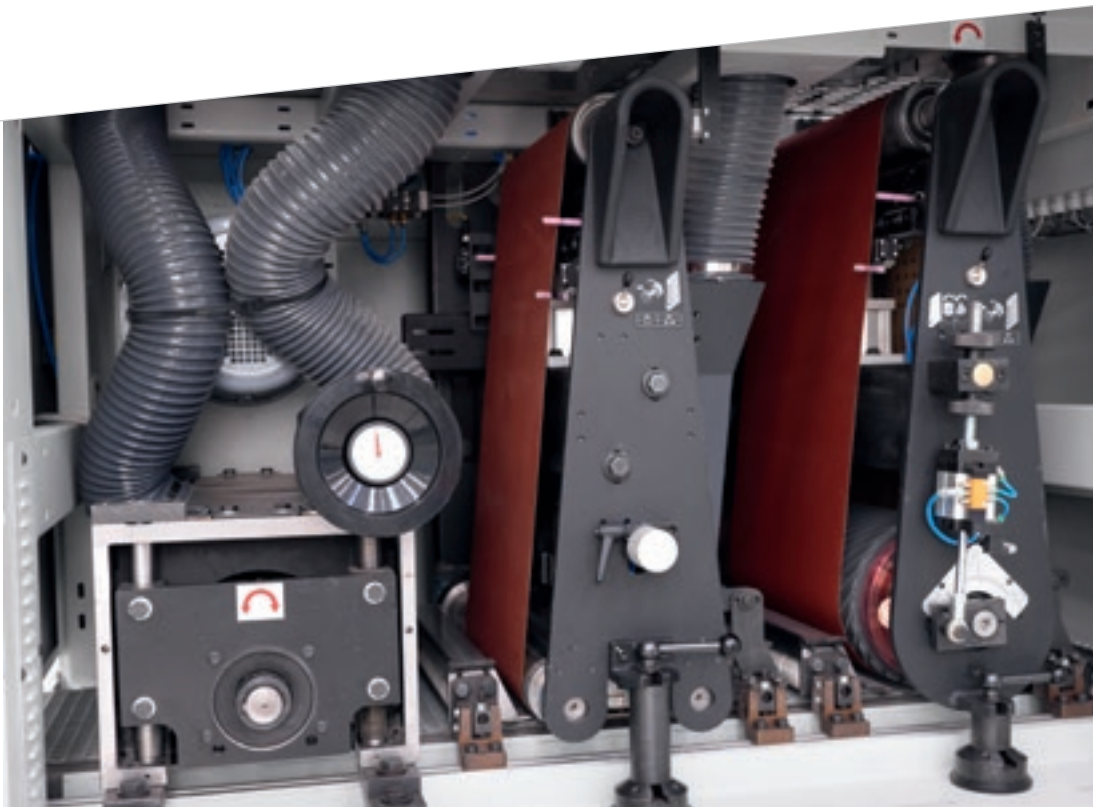
Pad.



Roller.

# OPTIMISED MACHINING OPERATIONS

Narrow is the machine recommended for processing pieces of limited width (up to 650mm). Perfect for flooring and disassembled window elements, or long, narrow pieces.



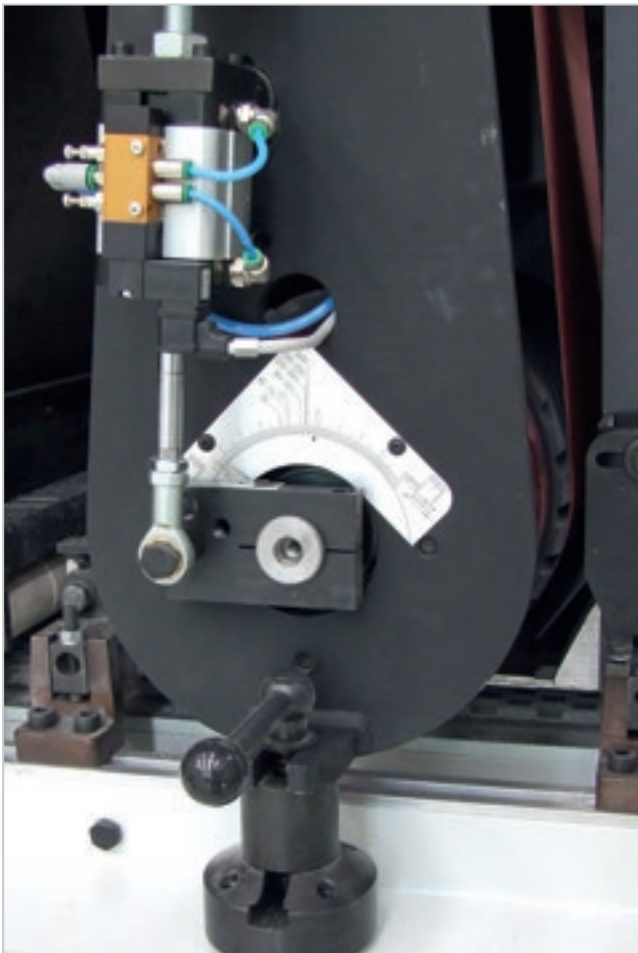
Upper units



Lower units

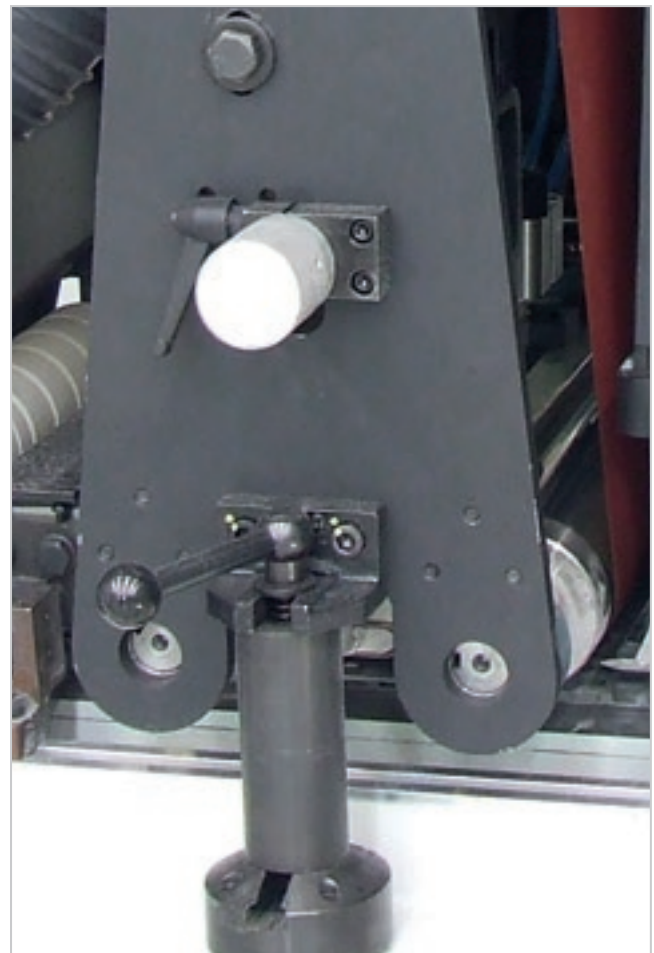
Roller, pad and abrasive brush units.

Narrow can support continuous and intensive machining operations following profiling steps. High performance line operations with forward speeds of up to 100 m/min.



### Machine roller unit

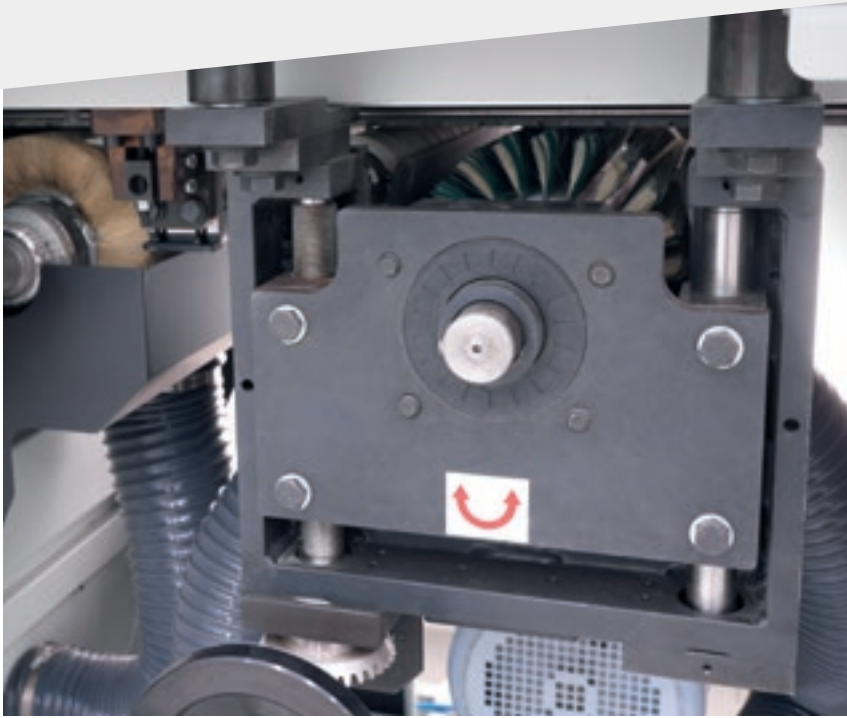
The Roller unit is extremely precise and effective. Depending on the hardness of the rubber used and the roller's cross-section, the unit can be used to calibrate, sand or finish. Available cross-section sizes: 190 mm and 240 mm.



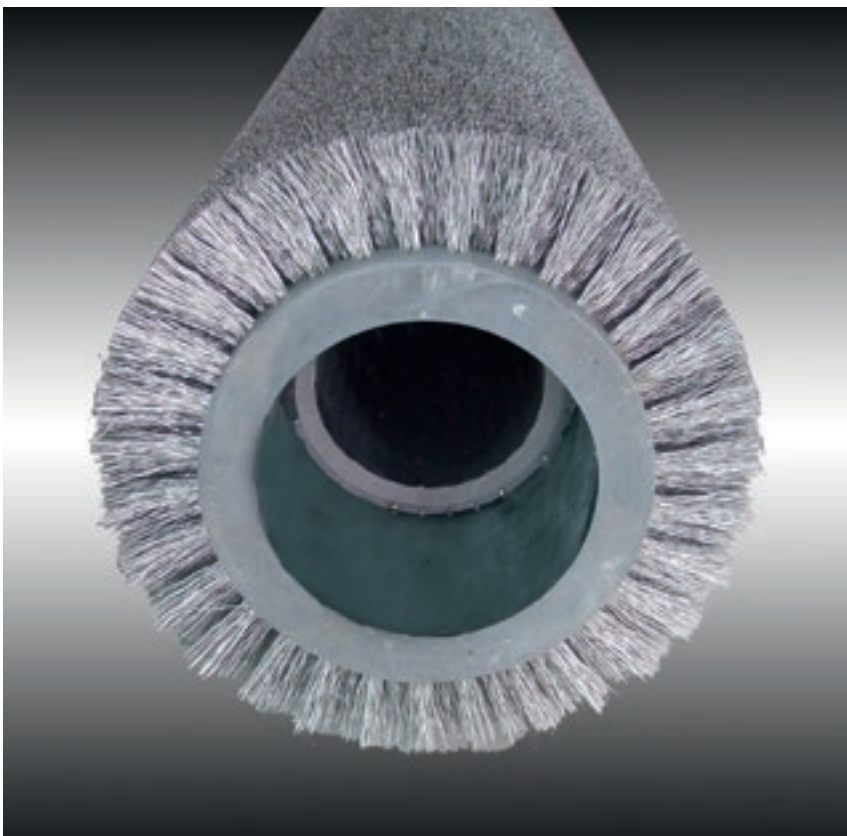
### Pad unit

The soothing pad group is the ideal tool for smoothing and finishing with reduced surface roughness.

# EXCEPTIONAL FINISH QUALITY



Sturdy and reliable, the **longitudinal brush** is fitted with a cross-sectional oscillation system to provide a uniform finish quality for the end piece, as well as with electronic interference adjustment managed from the control panel. Abrasive bristles can be replaced quickly and without the need of removing the unit from the machine. 200 mm cross-section abrasive brush.



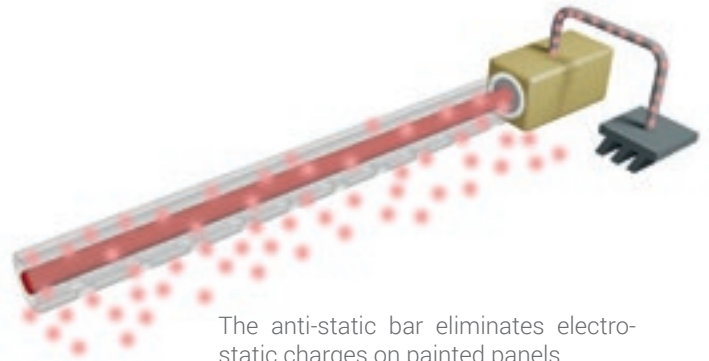
The **brushing unit** enables the customer to highlight the wood grain of processed panels.



# OPTIMUM PANEL CLEANING

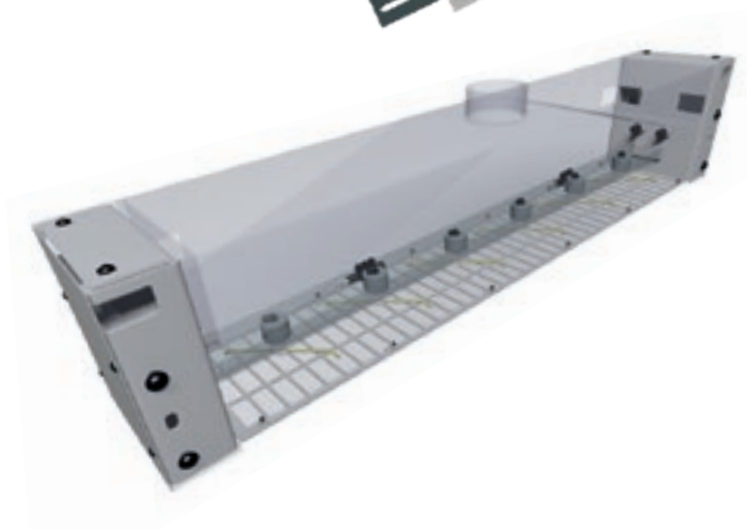
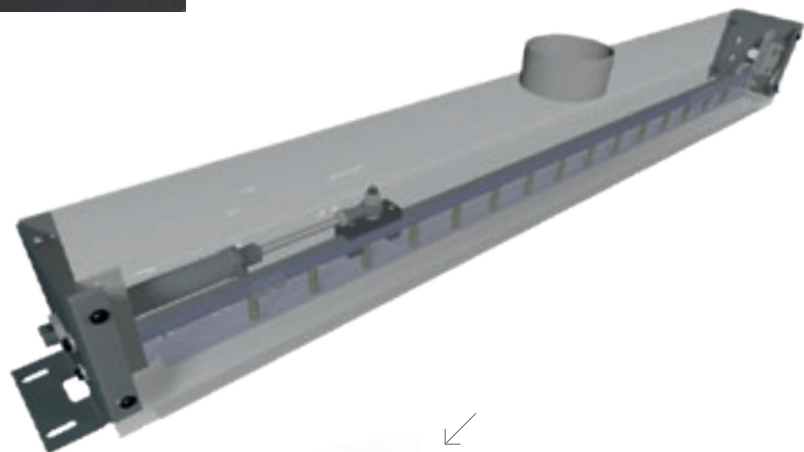


The panel cleaning brush is ideal for thoroughly cleaning the machined panels.



The anti-static bar eliminates electrostatic charges on painted panels.

The **linear blower** is used to finish cleaning the panel's edges. Ideally, it should be coupled with the rotating blower.



↙  
The **rotating blower**, positioned downstream of the machine, enables optimal cleaning of the panel's surface at the end of the sanding cycle.

# ENERGY SAVING SYSTEM

## ECO-FRIENDLY SMOOTHING

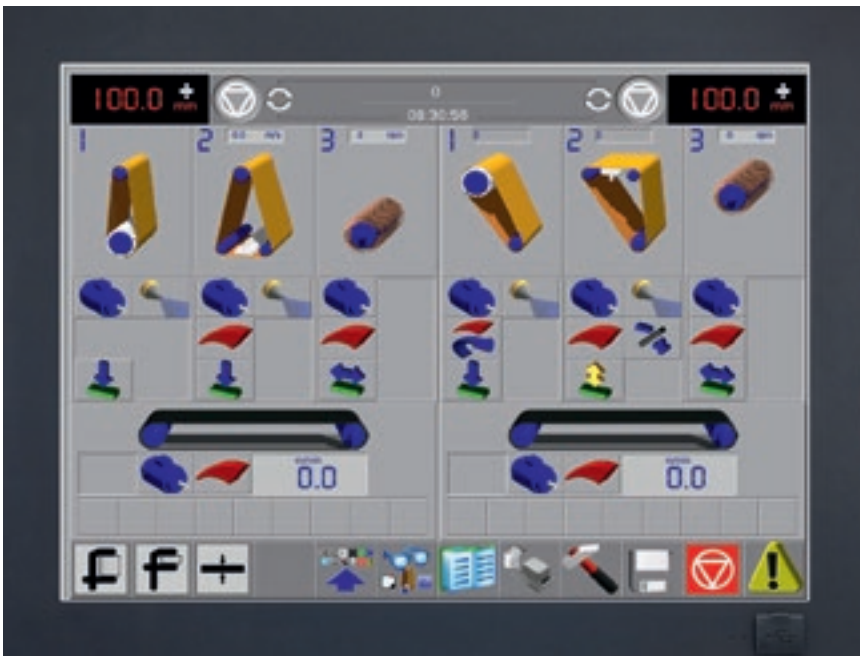
**With every attention to saving energy, the Biesse range of machines includes the E.S.S. system, which allows for energy savings of up to 30% with regard to both electricity consumption and CO<sub>2</sub> emissions.**

The Energy Saving System is a series of devices designed by Biesse to minimise energy consumption during machining. They are engineered and designed to ensure a high degree of efficiency, as well as optimising production, with effective suction thanks to the automatic opening of the collectors, in accordance with the units in operation; in addition, an automatic system stops machines and places them on standby after a pre-determined period of inactivity, and the vacuum table system, which operates by means of an inverter, optimizes the vacuum for holding the panel, according to the size of the panel being processed.



# EASE OF USE AND POWER

IPC is a range of Control systems that are integrated into the machine via 8" or 15" Touch Screen monitors. This type of control system supports the management of all machine parameters, providing the operator with timely and intuitive information. The industrial PC processor provides control and feedback information to the machine in real time, making it extremely user friendly for the operator.



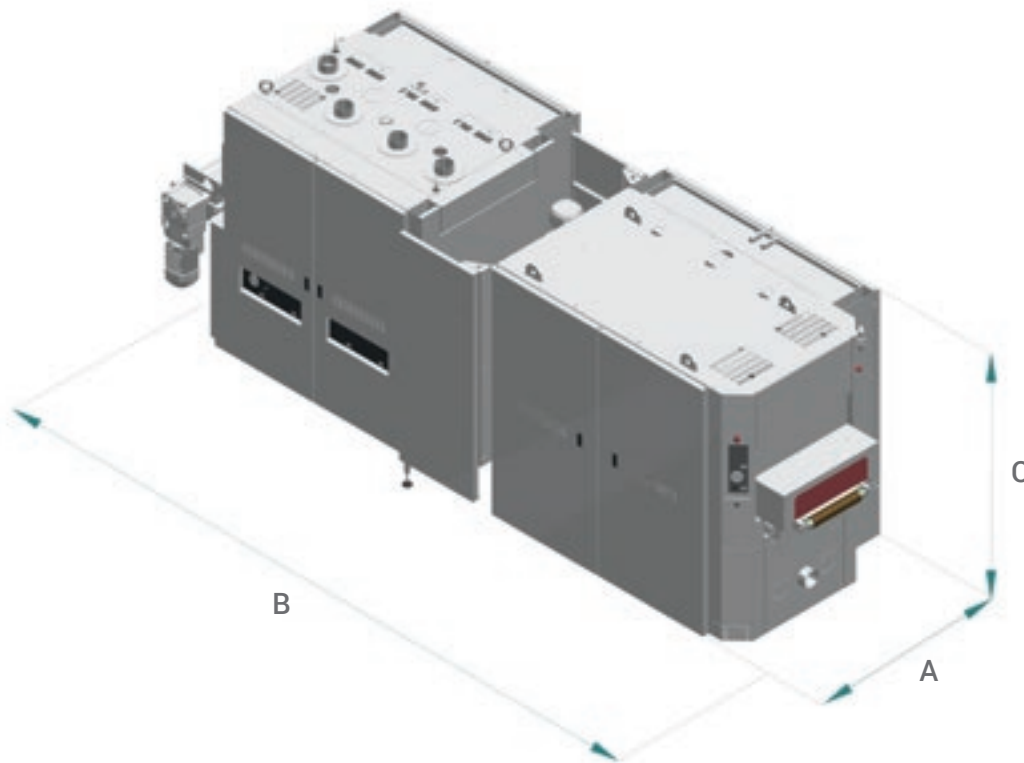
The IPC system is the highest expression of sanding machine management technology available on the market.



IPC 15 - a single interface for the management of the entire line.

The IPC 15 control manages Narrow even in configurations which consist of both lower and upper machine units.

# TECHNICAL SPECIFICATIONS



	NARROW 2.4i + 2.4s	NARROW 3.4i + 3.4s	NARROW 4.4i + 4.4s
A (mm / inch)	1515 / 59.6	1515 / 59.6	1515 / 59.6
B (mm / inch)	4450 / 175.2	5350 / 210.2	6300 / 248
C (mm / inch)	1920 / 75.6	1920 / 75.6	1920 / 75.6
Working width (mm / inch)	400 / 15.7	400 / 15.7	400 / 15.7
Min-max processing thickness (mm / inch)	3 - 160 / 0.1 - 6.3	3 - 160 / 0.1 - 6.3	3 - 160 / 0.1 - 6.3
Abrasive belt dimensions (mm / inch)	430 x 1900 / 16.9 x 74.8	430 x 1900 / 16.9 x 74.8	430 x 1900 / 16.9 x 74.8
Forward speed (m/min)	3 - 16	3 - 16	3 - 16
Operating pressure (bar)	6	6	6
Mass (Kg)	4380	4900	7240
Motor power up to (Kw (HP))	15 (20)	15 (20)	15 (20)

The technical specifications and drawings are non-binding. Some photos may show machines equipped with optional features. Biesse Spa reserves the right to carry out modifications without prior notice.

Weighted sound pressure levels at the machine entry operator station: 75.0 dB(A) without load, 76.0 dB(A) with load. Weighted sound pressure levels at the machine exit operator station: 70.5 dB(A) without load, 71.0 dB(A) with load.

Viet Srl. designed the machine to reduce airborne noise emission at source to the lowest possible level, in accordance with the requirements of Community Directive 2006/42/EC, and commissioned a test to determine the sound pressure emission level at the operator station for the smoothing/sanding machine.

The measurement was carried out in compliance with UNI EN ISO 19085-8:2018, UNI EN ISO 11202:2010. The noise levels shown are emission levels and do not necessarily correspond to safe operation levels. Even though there is a relation between emission levels and exposure levels, this cannot be used reliably to establish whether further precautions are necessary.

The factors determining the noise levels to which the operative personnel are exposed include the length of exposure, the characteristics of the work area, as well as other sources of dust and noise, etc. (i.e. the number of machines and processes concurrently operating in the vicinity). In any case, the information supplied will help the user of the machine to better assess the danger and risks involved.

# CUSTOMER CARE IS WHO WE ARE

**SERVICES** is a new experience for our customers, to offer not just excellent technology but the added value of an increasingly direct connection with the company, the professionals who work there and the experience they embody.



## **ADVANCED DIAGNOSTICS**

Digital channels for remote interaction online 24/7. Always ready to intervene on-site seven days a week.



## **A WORLDWIDE NETWORK**

39 branch offices, over 300 certified agents, retailers in 120 countries, and spare parts warehouses in America, Europe and the Far East.



## **SPARE PARTS AVAILABLE IMMEDIATELY**

Identification, shipping and delivery of spare parts for every need.



## **EVOLVED TRAINING OPPORTUNITIES**

Lots of on-site, online and classroom training modules for personalised growth.



## **VALUABLE SERVICES**

A wide range of services and software packages to help our customers achieve continuous improvements in performance.

## AN EXCELLENT LEVEL OF SERVICE

**+550**

HIGHLY SPECIALISED  
TECHNICIANS AROUND  
THE WORLD, READY TO HELP  
CUSTOMERS WITH EVERY  
NEED

**90%**

OF MACHINE DOWN CASES  
WITH RESPONSE TIME  
UNDER 1 HOUR

**+100**

EXPERTS IN DIRECT  
CONTACT THROUGH  
REMOTE CONNECTIONS  
AND TELESERVICE

**92%**

OF SPARE PARTS ORDERS  
FOR MACHINE DOWNTIME  
PROCESSED WITHIN 24  
HOURS

**+50.000**

ITEMS IN STOCK IN THE  
SPARE PARTS WAREHOUSES

**+5.000**

PREVENTIVE MAINTENANCE  
VISITS

**80%**

OF SUPPORT REQUESTS  
SOLVED ONLINE

**96%**

OF SPARE PARTS ORDERS  
DELIVERED IN FULL ON TIME

**88%**

OF CASES SOLVED WITH  
THE FIRST ON-SITE VISIT

# MADE WITH BIESSE

## A SINGLE SOLUTION FOR SANDING AND PROFILING

Alpilegno, a Leader in the sector of high-quality, high-performance windows and doors, performs sanding operations followed by profiling operations in its Val di Ledro (TN) manufacturing unit.

Loris Cellana, an entrepreneur with long-standing experience in this sector, recalls how he evaluated machinery and system suppliers for over two years to find one that could guarantee a cutting-edge finished product: "In the end I chose Biesse". The core of the new manufacturing line is a Uniwin machine, combined with a modern 5-axis Rover C that produces doors.

"I think that Uniwin is already a good profiling machine in itself, but what was equally important to me was its interaction with other line components, such as the planer, the sanding machine and the press, and the material flow between the various machines". Components are custom-cut and stored in a loading device by Biesse's automation programme that feeds the automatic planer. A con-

veyor belt moves the work pieces from the planer to the sanding machine, a Viet Narrow 334 Bottom also supplied by Biesse. From there, the components are sent to the Uniwin's loader, from which they are picked to be fully processed. 72, 80, 92 and 104 mm thicknesses in wood and wood-aluminium are processed. The magazines house up to 98 tools that are always available. Such tools can be changed in real time during machine operation thanks to a chain-operated tool-changer.

"Assembly precision enables us to avoid having to remove glue residues from the frame", explains Cellana: "in this way, surface calibration and sanding must be arranged the one after the other, to go to the pressing stage immediately after profiling". Moreover, individual components are not painted before they are pressed, as it is customary. As a matter of fact, Cellana paints the entire frame.

The compact production line occupies a footprint of only 15x15 metres; compo-

nents are always handled forward and backward from the planing to the profiling machine, leaving enough space also for a walkway.

"I like Biesse's solution: it is compact, the machines are efficient and, since they all come from the same supplier, it is easy to learn how to operate them", explains a visibly satisfied Cellana.

*Source: Holzkurier Austrian magazine/special Nuremberg Exhibition issue.*





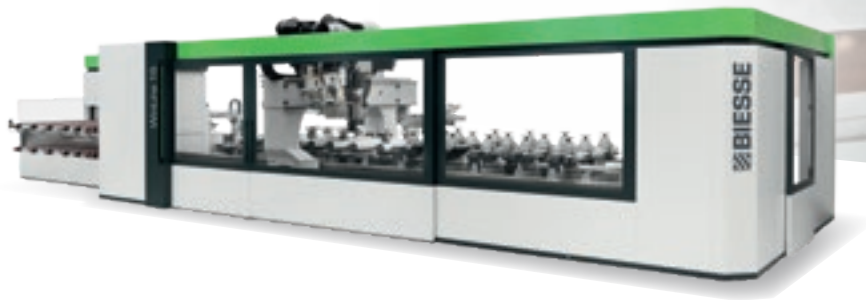
# MATCH WITH

Biesse is the ideal partner throughout the entire production process. Courtesy of a complete range of cutting-edge products combined with the ongoing development of latest-generation technologies, Biesse is ready to respond to even the most complex requirements of companies within the sector.

We are on hand to recommend the ideal technologies to support your business, for efficient and competitive production: machining centres, panel saws, edgebanding machines, vertical and horizontal boring machines, sanders and handling and assembly solutions.

## WINLINE

AUTOMATION



## ROVER c

PERFORMANCE  
ABOVE THE INDUSTRY STANDARD



Founded in Italy,  
international native.

We simplify your  
manufacturing  
to make the process  
of any material



ur  
g process  
potential  
I shine.

We are an international company that manufactures integrated lines and machines to process wood, glass, stone, plastic and composite materials and what will come next.

Thanks to our rooted competence nurtured by an ever-growing worldwide network, we support your business evolution – empowering your imagination.

**Master of materials, since 1969.**

Join the  
Biesse world.

[biesse.com](https://www.biesse.com)



