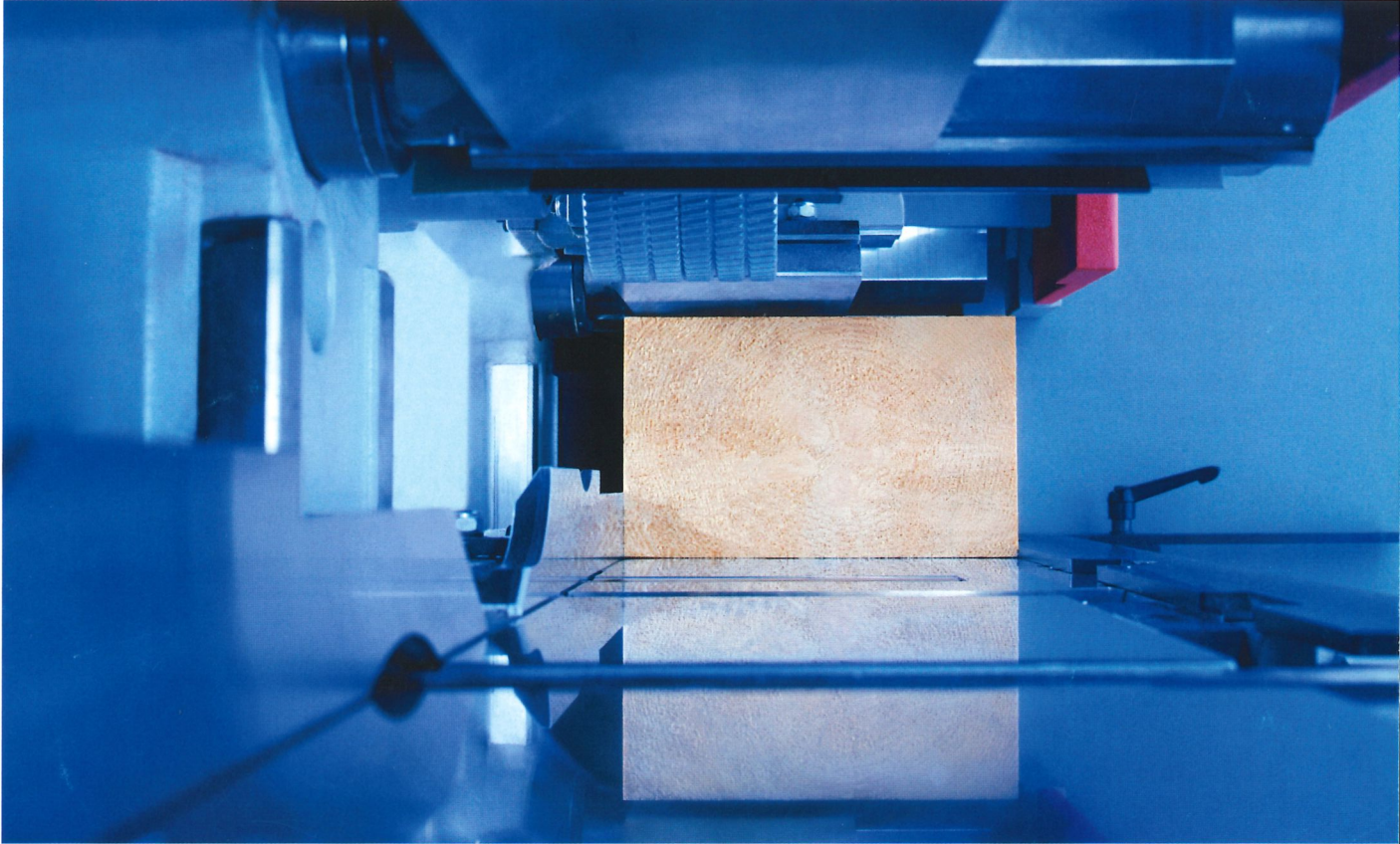


Competence that leads the way worldwide



Weinig Powermat 500

**Your entry into the new
Powermat world. Move
to a higher level of
profitability and output
with Weinig's PowerLock
and Memory Technology.**



The powerful technology of the new Powermat 500 at a glance

Weinig Memory System

- Once produced – repeated at the push of a button

All setting data of any profile produced in the past can be called up at any time.

PowerLock tooling system

New Weinig tooling technology for fast and simple cutter-head changes and a superior surface finish.

- Fast and easy tool change at the push of a button
- Positive locking tooling provided by the solid HSK-type clamping

8000 revolutions per minute

- Optimum surface quality
- Higher RPM means higher feed speed and more output

Frequency controlled feed

- Exact setting of the feed speed
- Infinitely variable from 5-30 m/min.

Heavy-duty cast-iron design

- Vibration absorption
- Highest surface quality

Pneumatic pressure for feed rollers

- Even pressure – even for workpieces of different thickness

Infeed roller in front of 1st bottom tool holder

- Up/down adjustment at the control panel for your convenience

2 pressure rollers in front of 1st left tool holder

- Precise control of short parts and small cross-sections

Maximum cutting circle of the moulding tool holders 200 mm

- Up to 35 mm depth of cut possible

Working width	20-230 mm
Working height	8-120 mm
Number of tool holders	4-8
Motor capacity of 1st bottom tool holder	5.5-18.5 kW (7.5-25 HP)
Motor capacity of vertical tool holders	5.5-15 kW (7.5-20 HP)
Motor capacity of top tool holder	5.5-37 kW (7.5-50 HP)
Motor capacity of 2nd bottom tool holder	5.5-37 kW (7.5-50 HP)
Motor capacity of universal tool holder	5.5-11 kW (7.5-15 HP)
Motor capacity of the feed	3-11 kW (4-15 HP)
Feed speed (frequency controlled)	5-30 m/min
Tool holder revolution	8000 rpm
Tool cutting circle of 1st bottom tool holder, min.-max.	93-145 mm
Tool cutting circle of 2nd bottom tool holder, min.-max.	93-225 mm
Tool cutting circle of moulding tool holders	93-200 mm
Adjustment range of tool holders (axial)	55 mm
Adjustment range of 1st bottom tool holder	17 mm
Adjustment range of 2nd bottom tool holder	40 mm
Width of the roller in the outfeed table	50 mm
Adjustment range of the straightening table and edge-joining fence	10 mm
Length of the straightening table	2 m
Feed roller axially adjustable opposite left tool holder	35 mm
Weinig Memory System	
Rebate cutter	
Pneumatic pressure for feed rollers	
Roller in front of 1st bottom tool holder pneumatically controlled	
Adjustable table plates in vertical tool holder area	
2 lateral pressure rollers, spring mounted	
1 PowerLock tool holder of your choice	
Full safety enclosure	

Useful packages

- Window (adapted to industry specific requirements)
- Construction timber (300 x 200 mm)
- Comfort (easy and rapid operation)

Subject to technical modifications. Statements and illustrations in this leaflet may include optional equipment that is not part of the standard specification. Some safety covers removed for taking photos.



Michael Weinig AG
 97941 Tauberbischofsheim
 Germany
 Tel. +49 (0) 93 41/86-0
 Fax +49 (0) 93 41/70 80
 E-mail info@weinig.de
 Internet www.weinig.com