

Framing station WEM 100/150/250



The WEM System framing station

Modular structure

Weinmann extends its well-known, cleverly upgradable modular system by a new element: the framing station. It is available in three different types: – WEM 100, 150, 250 –, depending on the output of the houses requested

or planned. No matter which type of framing station you may choose, each type is of worldwidely-known Weinmann quality; in other words: a guarantee for precision and safety.



Production according to order

The framing station WEM can produce with batch size 1. This enables an individual customer-tailored production. The feeding roller conveyor as well as the discharge gripper and the stopping system are automatically adjusted in width (WEM 150/250). That is why there are no setting-up times when your products have different dimensions.



Quality

The positioning of the studs and the clamping of the frame work is fully-automated; this assures permanent high quality. During the nailing process, the frame work is additionally pressed firmly by the stopping system.

Easy to handle

A clearly laid out screen design means much more effective work for the user. The framing station can be operated by one person.

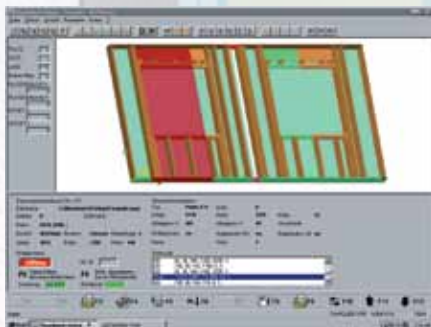


Software



The new software generation with new Power control

The great advantage of our new software generation running under Windows, is simple operation, but also the common interface on all Weinmann machines. You, and your employees, save time-consuming training and familiarisation particularly when your system is expanded and complemented by further Weinmann machines. The Power Control with an online connection and integrated remote diagnosis (contact plan and diagnosis by telephone) are important and efficient features. They save the customer having to pay the technician's costly travel expenses. Of course, it is also possible to run the machine by CAD/CAM link.



The following software programs are included as standard in the scope of the Power Control:

- Wup-Works
- Wup-View
- Wood-Scout I
- Schuler MDE Basic

Wood Scout I + (Option II)

Wood-Scout is a multimedia diagnosis system for display of faults and machine status. This allows systematic troubleshooting and reduces machine down time.

Wood-Scout II provides the possibility to save with your own comments (e.g. a specific fault). If the same fault happens again this comment pops up automatically. The integrated machine documentation opens automatically at the right position showing how to eliminate the fault.

All software systems are user-friendly – allowing you to eliminate many faults on your own without needing the help of our service team.

MDE

Schuler MDE Basic + Professional (Option). With the machine data entry you can save important data and use for yourself the relevant information. The following data can be analysed:

- Process times of machine
- User degree and cycle time
- Production quantities
- Error times & error reason
- Actual service condition
- Necessary service requirements

This way Schuler MDE Professional makes your production transparent and helps you, to cover up gaps and weak positions in the production. Schuler MDE basic is installed for free on every machine as a standard software.

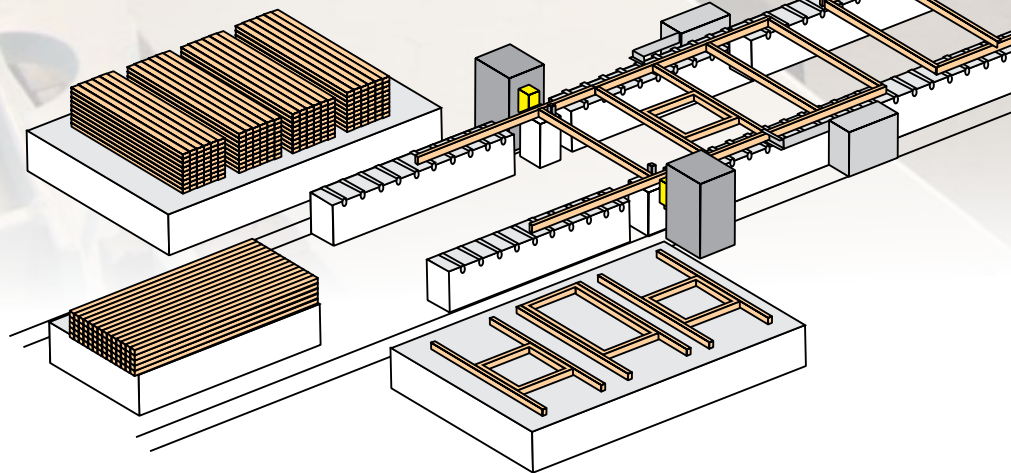


WEM 100

Complex frameworks –
easy to produce



It all starts with the new WEM 100. In this model variation, the beams and studs are fed in manually. After that, the discharge gripper drives along for the distance given. The next stud is put in, then nailed, and the process starts again. This offers a convenient starting model for craftsmen's businesses or smaller industrial companies with a production capacity from 100 houses per year on. Optional supplementary modules such as a noggin station and studs in feed is possible.



Cross cut saw unit
Suitable for the automated cutting of the plates and the sawing of a cross cut in multi walls. The plates are pneumatically tightened during the sawing process.

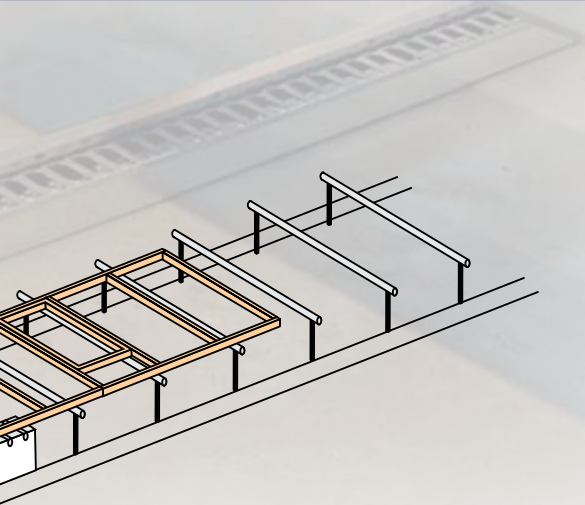
WEM 150



The model WEM 150 enables the semi-automatic production of complete framework. After the data record has been read, the element width is automatically adjusted at the stopping system and at the discharge gripper. The roller conveyor is likewise automatically set. The top and the bottom plates are manually lead onto a roller conveyor and positioned at the stops. The plates are automatically tightened and expanded. The studs are loaded into the station manually and subsequently positioned, tightened and horizontally nailed down automatically. During this process, window and door modules can also be installed. Gable elements can be produced as well and can likewise be integrated into all automation segments without any problems. The corresponding element is automatically driven to the NC-controlled



discharge gripper which moves exactly to the single stud positions. Another innovation are the freely definable nailing positions for different stud types such as L, U, T or multiple studs.



Nail plate press

Top and bottom plates can be extended endlessly. The pressing process is manually activated after the nail plates have been put into the press. The press is equipped with a 2-stage high performance hydraulic aggregat. The optimisation software considers overcuttings and therefore optimises the timber consumption end plate position.



WEM 250

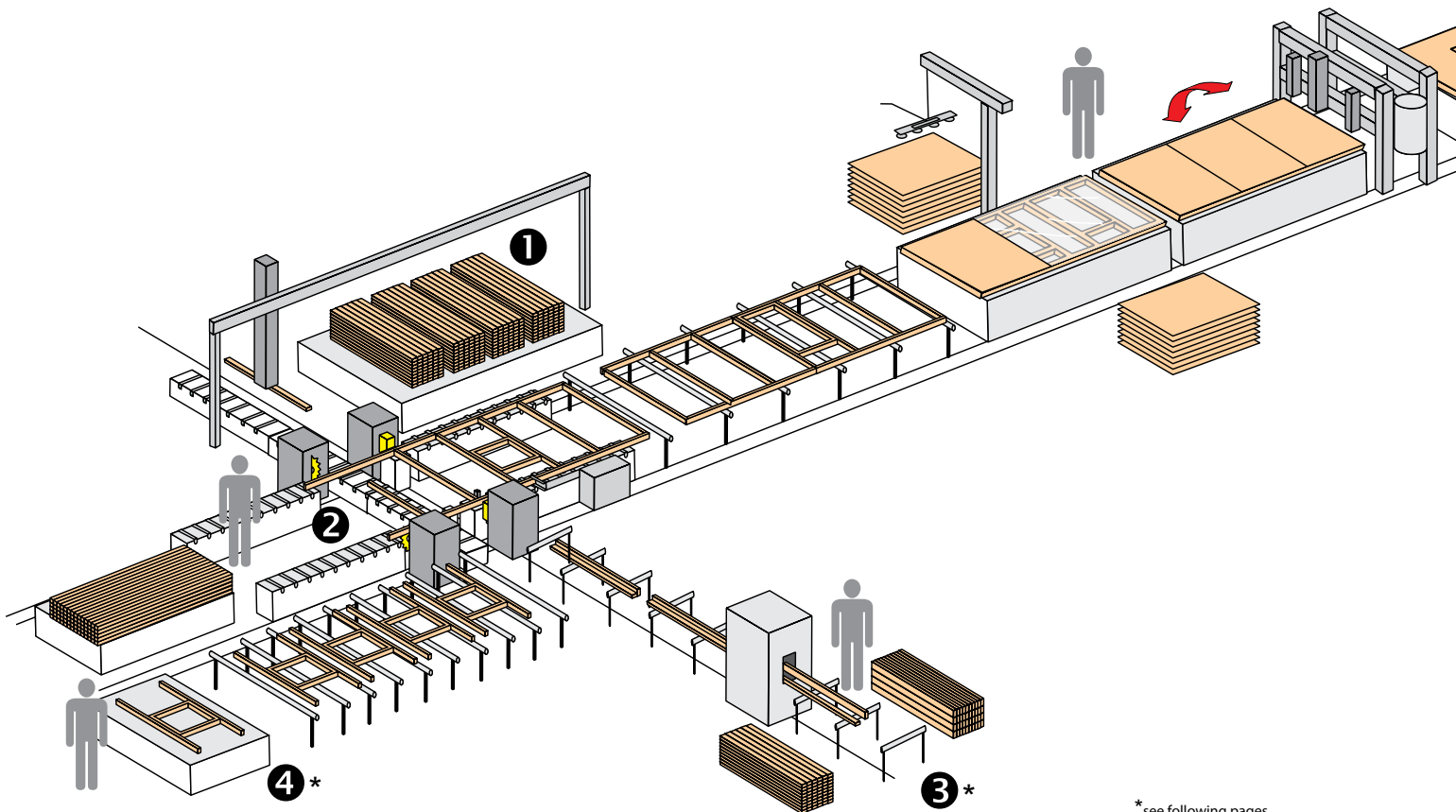
The WEM 250 model is similar to the WEM 150 type, but is additionally equipped with a fully-automated stud assembly. This means that the studs are fed and positioned by a feeding portal which takes timber of different dimensions from several stacks onto the roller conveyor. From there on, the studs are transported into the stud assembly station and fully-automatic assembled into the framework. A performance of 2 m per minute can be achieved; this means that, depending on the type of framing station, a production size from up to 1000 houses annually is possible.



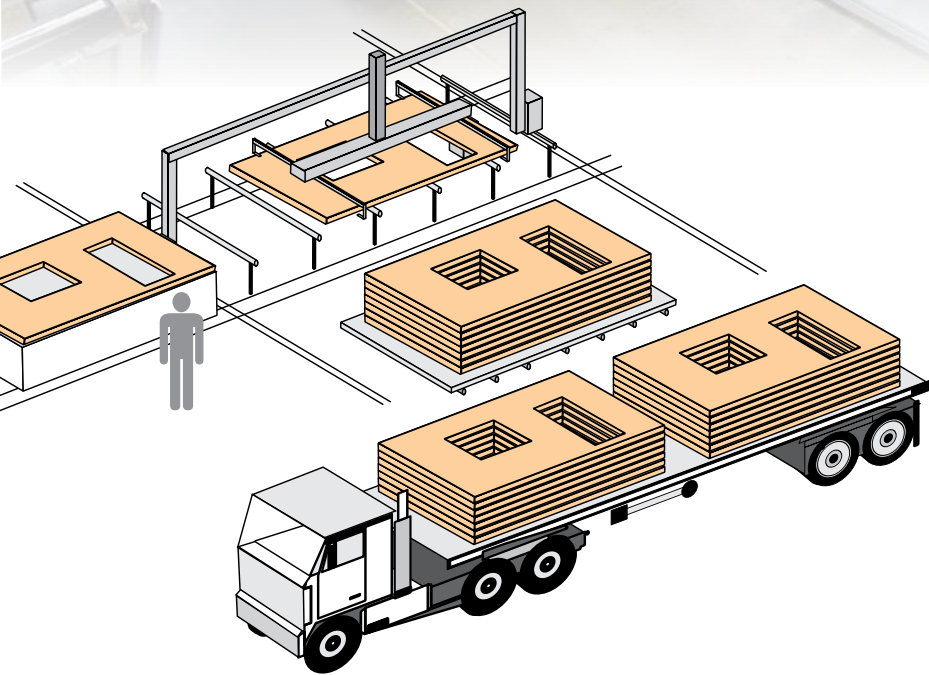
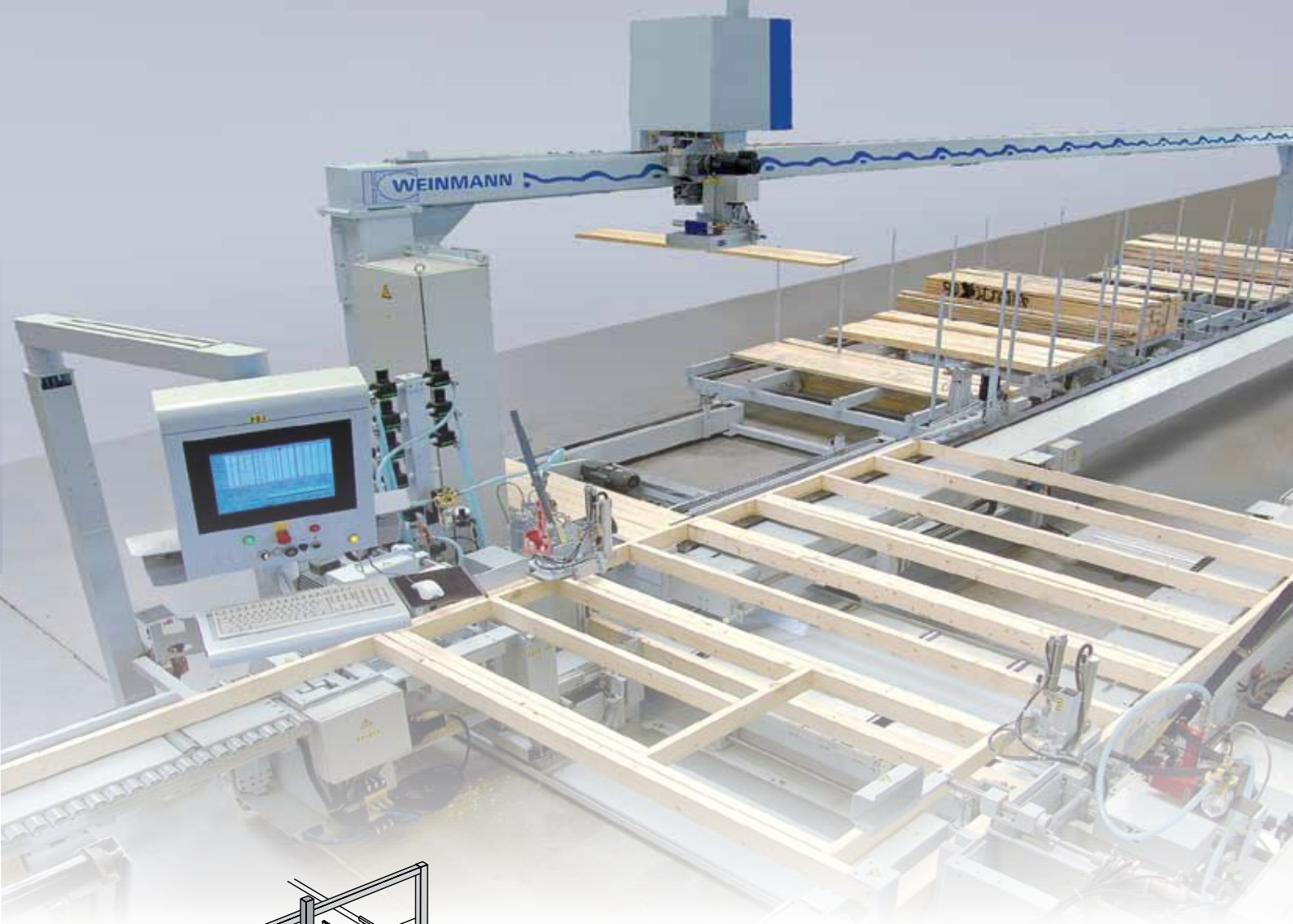
1



2



* see following pages



Complete production lines
From the budget-priced starting type to the standard model up to high-performance types, Weinmann offers an individual, customer-tailored solution for every budget and each batch size. The product range covers all the proceedings of modern, machined pre-fab timber house-building: feeding, beam processing, assembly of frameworks, handling and transport systems as well as the space-saving storage of the elements.

Additional benefit thanks to clever optional features

Module production line



Module table

Window and door elements are manually produced on a module table. The table consists of a working surface with a firm y-stop and a louverable x-stop. The table has a continuous opening to enable trouble-free access.

4

Module support

The module support consists of liftable rolls, either on one side (single support) or on two sides (double support) of the feeding roller conveyor. A quick and swift assembly is achieved, especially with heavy and asymmetrical modules, as the support unit simplifies the assembly of the modules into the framing station.



Isolation station

This is needed for the integration of the insulation material into the framework. The insulation material (only plates) is transported to the operator via a gripper and a transport band conveyor. From the band conveyor on, the operator can easily assemble the insulation plate - which has automatically been cut into the dimensions requested-into the framework.

Noggin assembly station

It is a support station for the assembly of short longitudinal studs (noggin). The station is manually movable on linear guides and is located in between the framing station's stopping system. The noggins are assembled manually.



WES Component nailer



Functions of the machine

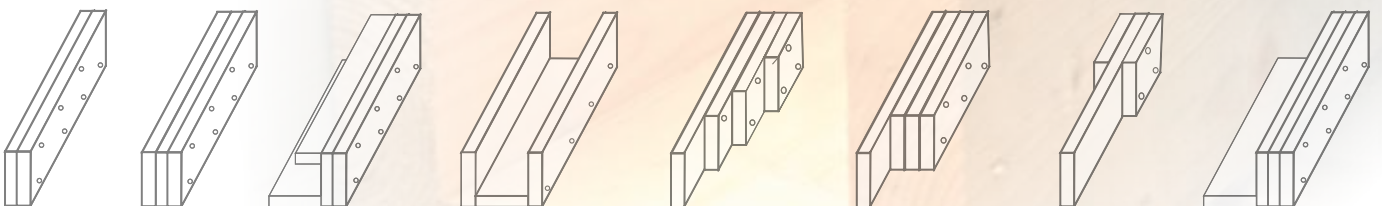
The component nailer nails and clamps multiple studs, corners, channels as well as all other special shapes. The machine is equipped with 4 clamping or nailing units; two of them are adjustable in height with a motor, so that freely definable nailing positions can be chosen.



Your advantages

You will really appreciate the easy operating via touch screen monitor, the quick stud type determination, the high capacity in production- one stud each 10 seconds- and the wide processing range

3



Technical data

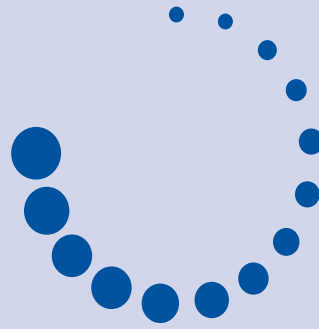
max length
of the work piece: 3.800 mm
max cross section.: 300 x 380 mm
min. cross section: 38 x 38 mm
capacity: approx. 10 sec./ stud



Noise-insulating cabin

The component nailer WES is equipped with a noise-insulating cabin. This corresponds to the latest safety regulations. You can profit from a smooth production, free of noise and spreading wood or metal splinters.

lifeline I service



Lifelong service.

What does WEINMANN offer with lifeline? Lifeline is the name under which WEINMANN has summarized its comprehensive service package. In addition to individual training, advanced software, and fast parts dispatch, a wide range of services are provided at affordable costs.

The quickest way to first-class replacement parts

The availability of high-quality, original WEINMANN parts is a prerequisite for problem-free operation. The quicker you receive the required parts, the shorter the downtimes. Therefore, WEINMANN keeps virtually all machine parts in permanent stock.



World-class service

Availability is the essential element of a perfect service. Weinmann can offer this anywhere in the world when on-site service is required.

If on-site service becomes necessary, our committed service network will produce results. Strategically located offices, parts departments and field service representatives backed by support from Weinmann Company provide a level of service unmatched in the industry. This level of investment and commitment to service ensures customers are serviced by trained personnel traveling short distances, immediate action and intensive customer contact.

Your orders are processed immediately and dispatched with minimum delay. Weinmann also offers individual spare parts packages to ensure an even higher level of security for your ongoing production.



Efficient remote service

Time is money. This is especially relevant in the ongoing production process. Faults or even downtimes cause expensive interruption. To prevent this and ensure that you receive a fast, systematic response to emergencies, WEINMANN has set up short service routes. The result is a combination of an expert hotline and high-tech tools for remote diagnostics. This allows you to save valuable time, while ensuring low service costs.

Just one call to the WEINMANN helpline is all that is needed; you will be put through to an expert who is familiar with your system and will provide immediate assistance - in German or English. Most questions can thus be clarified directly and minor problems resolved immediately.

Your benefits:

- Fast problem-solving
- Optimum support for your operating and maintenance personnel
- Reduced service costs due to fewer technician call-outs.

The right connection: Teleservice via modem and/or TeleserviceNet

The WEINMANN Teleservice via modem and/or TeleserviceNet goes one step further. Upon completion of a corresponding service agreement, our helpline assistants will have direct access to your systems via these high-tech instruments. They can operate the machines via remote control, diagnose all processes, and interact with all functions - even during ongoing production.

The lifeline range of services is divided into the following areas:

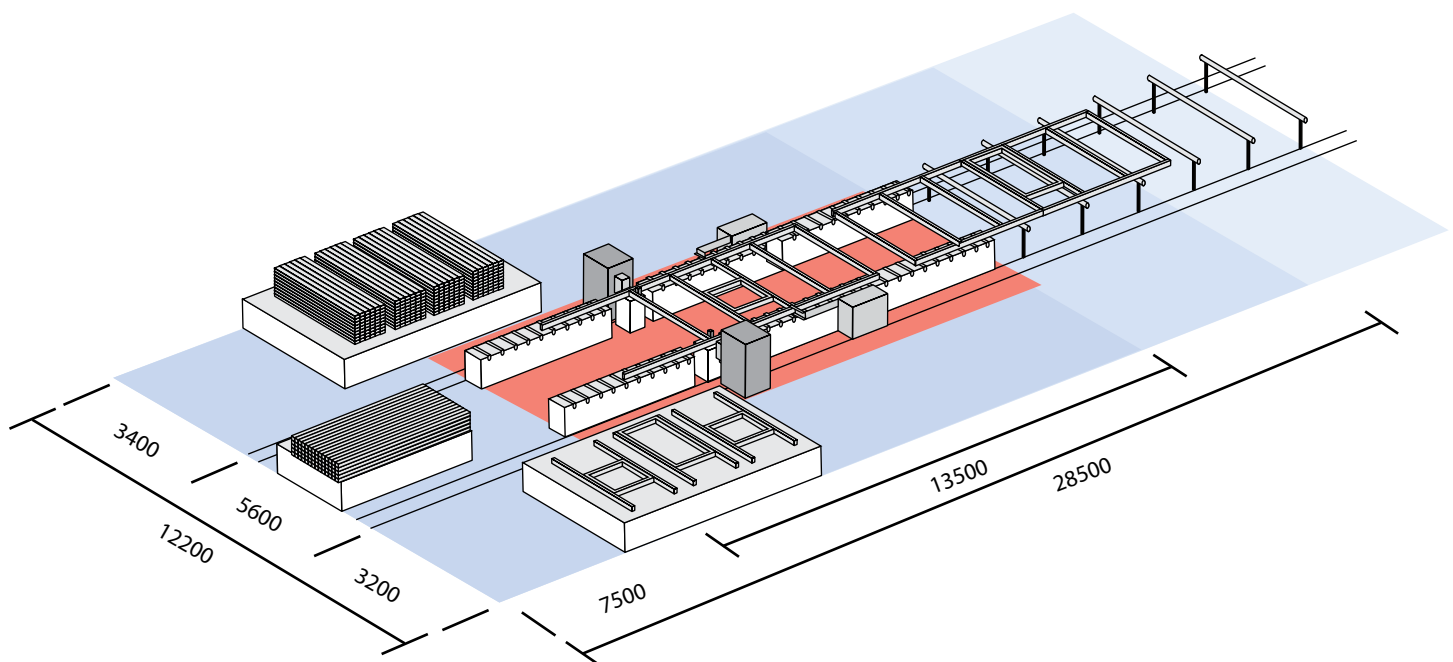
- Remote service – the service hotline
- On-site service – assembly & maintenance
- Knowledge management – training & documentation
- Spare parts - parts & accessories

Practical training

While Weinmann products are easy to operate, thorough training reduces commissioning times, avoids unnecessary attempts, strengthens the proficiency of operations, and raises the efficiency of machines and systems from day one.



Technical data



	WEM 100	WEM 150	WEM 250
length of the element:	6/8/10/12 m	6/8/10/12 m	6/8/10/12 m
width of the element:	1,50 – 3,20 m (opt. 3,80 m)	1,50 – 3,20 m (opt. 3,80 m)	2,00 – 3,20 m (opt. 3,80 m)
height of the element:	75 – 200 mm (opt. 300 mm)	75 – 200 mm (opt. 300 mm)	75 – 200 mm
timber thickness:	35 – 80 mm	35 – 80 mm	35 – 80 mm
performance:	0,5 – 1,0 m/min	0,8 – 1,5 m/min	0,8 – 2,0 m/min
capacity:	from about 100 houses on	from about 250 houses on	from about 800 houses on
CAD connection:	yes	yes	yes
module infeed:	manual	manual/automatic	manual/automatic
stud infeed:	optionally available	optionally available	automatic
positive stud placement:	optionally available	yes	no
auto. installation of studs:	no	no	yes
plates infeed:	no	no	optionally available
nail plate press:	optionally available	optionally available	optionally available
sawing unit:	optionally available	optionally available	optionally available
marking unit:	optionally available	optionally available	optionally available
labelling unit:	optionally available	optionally available	optionally available
drilling unit:	no	optionally available	optionally available
noggin installation:	optionally available	optionally available	no
height of nailing-/clamping pos.:	manually adjustable	automat. freely positionable	automat. freely positionable
adjustment in width:	manual/automatic	automatic	automatic



WEM 100/150/250 E 03/03.11 · Subject to technical modifications

A company of the Homag Group



Weinmann
Holzbausystemtechnik GmbH
Forchenstraße 50
D-72813 St. Johann-Lonsingen
Telefon + 49 (0) 71 22 / 82 94-0
Telefax + 49 (0) 71 22 / 82 94 66
E-mail info@weinmann-partner.de
www.weinmann-partner.de