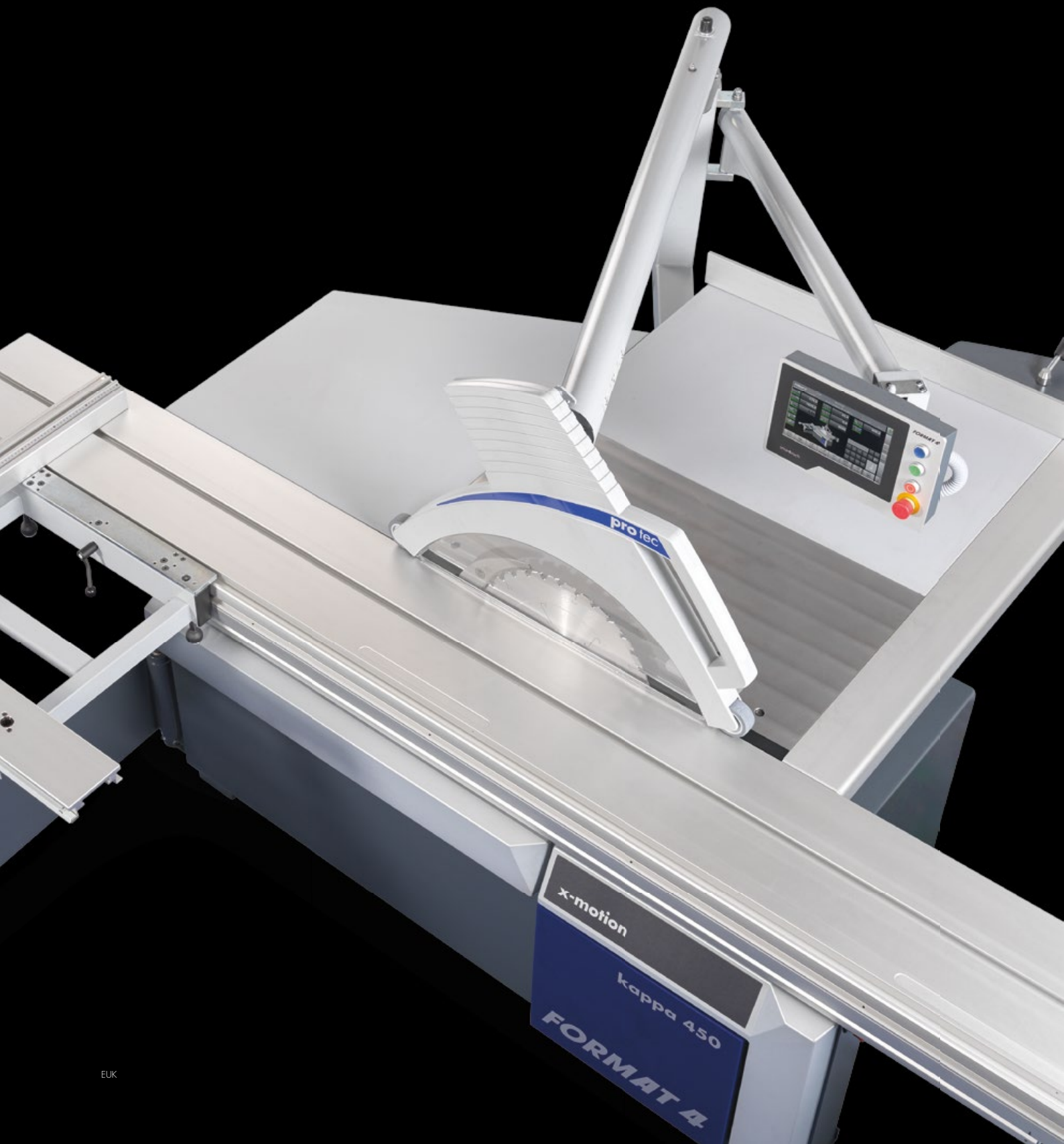
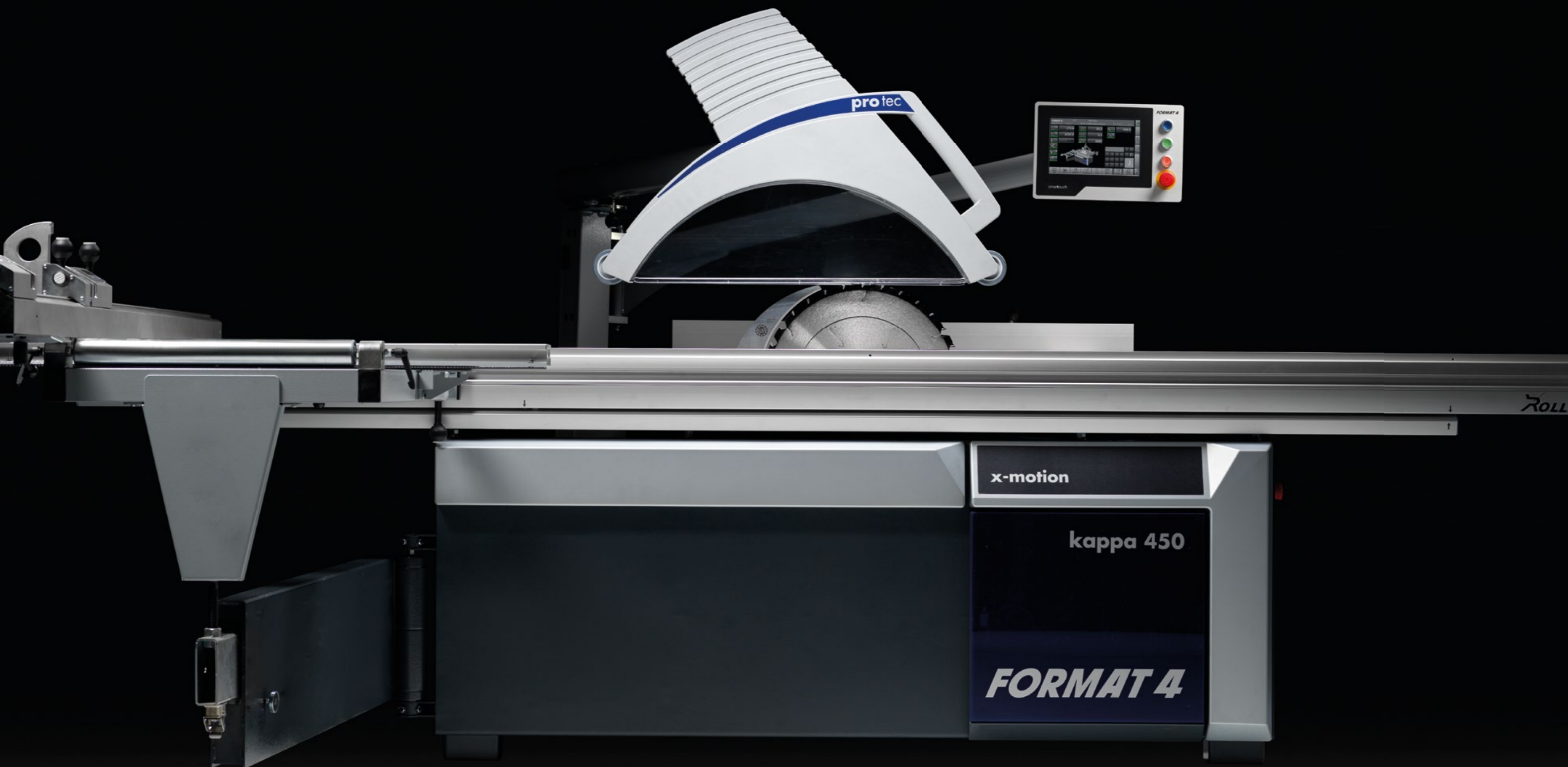


FORMAT 4®

kappa 450
A CLASSIC IS BACK



FORMAT 4[®]



kappa 450

The all-time classic is back!



Solid wood



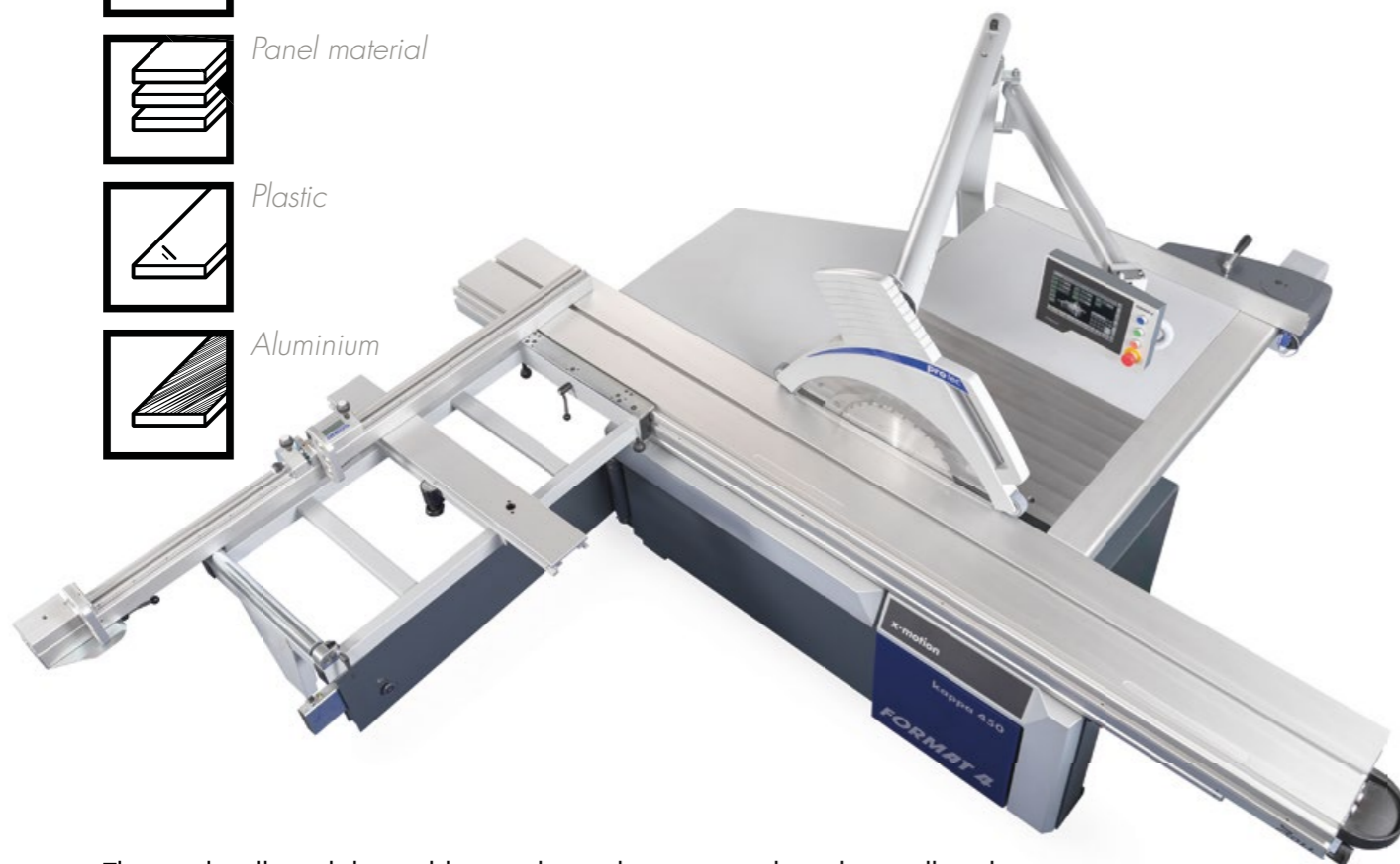
Panel material



Plastic



Aluminium



There is hardly a sliding table panel saw that is remembered as well as the Format4 kappa 450, even years after its market launch. With its outstanding performance, long-lasting precision and award-winning design, the kappa 450 was already ahead of its time in 2001, making it go down in history as a true classic.

More than 20 years after its market launch, the new edition of this sliding table panel saw classic, the kappa 450, is now more than ever in tune with the times and convinces in every aspect. State-of-the-art machine technology combined with innovative, future-oriented detailed solutions ensure precision and perfection of every cut. For decades, the exemplary intuitive user-friendliness, the extremely high quality of workmanship, the seemingly timeless elegance of the design and its consistent precision have been valuable Format4 standards and provide decision-making assurance for years to come.

On request, the revolutionary, unique PCS® safety device for sliding table panel saws provides maximum safety at work – only with Felder and Format4.

FORMAT 4®

Variations

Models & Your Advantages



kappa 450 x-motion

High-precision premium sliding table panel saw with 155 mm cutting height, patented "X-Roll" sliding table, maintenance- and lubricant-free "Easy-Glide" saw unit swivel segment guide as well as the worldwide one of a kind PCS® safety device.

The x-motion equipment features the intuitive smarttouch control with 10" touchscreen, a controlled rip fence, tool database, cutting programmes, programmable cutting sequences and much more.



kappa 450

High-precision premium sliding table panel saw with 155 mm cutting height, patented "X-Roll" sliding table, maintenance- and lubricant-free "Easy-Glide" saw unit swivel segment guide as well as the worldwide one of a kind PCS® safety device.

FORMAT4 Premium Machines for Premium Requirements

- » Constantly high performance in industrial continuous operation
- » Customer specific optimised production solutions
- » Solid design with premium components
- » Wide range of configuration packages with high-tech solutions
- » Complete engineering precision
- » Premium user comfort
- » Quality and precision from AUSTRIA
- » Uncompromised productivity
- » Perfect service package before, during and after the purchase
- » Tailor made financing solutions
- » Mechanical engineering experience since 1956

The most important highlights at a glance



Smartouch control

Intuitive operation via 10" smartouch control with state-of-the-art capacitive touchscreen.

- » Tool database (incl. scoring unit position on the 2 axes scoring unit and scoring unit Control)
- » Cutting programs (general)
- » Storage of the last five values entered
- » Import and export of the tooling database, program storage
- » Remote maintenance via Teamviewer
- » Park position (rip fence, scoring unit control)
- » Incremental adjustment of the axes
- » Many cutting programs
- » Processing cutting plans of a cutting optimisation software



High positioning speed

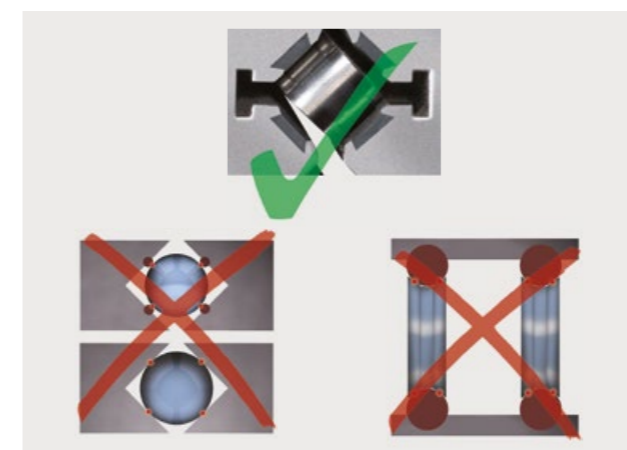
Simultaneous 3-axis positioning – saves time up to 50% compared to other premium manufacturers



"Easy-Glide" – tilting of the aggregates without lubricants or maintenance

The saw unit is tilted using the tried-and-tested Format4 "Easy-Glide" swivel segment guide. The "sliding shoe guides" on the large-sized swivel segments are made of a synthetic, wear-free high-performance material, which is dust-resistant and requires neither maintenance nor lubrication.

On the "Easy Glide" system have a 6 year guarantee!



Sliding table "X-Roll"

The X-shaped arrangement of the hardened steel rollers distributes the occurring pressure load optimal in all directions.

There is no point loading, the guide system is extremely smooth-running and durable.

The Felder "X-Roll" Sliding table comes with 10 year factory warranty!



WORLD FIRST: PCS® – Preventive Contact System

Serious accidents with sliding table panel saws are a thing of the past – PCS® is currently the fastest, non-contact triggering safety device in the world.

- » PCS® detects accident hazards before contact with the saw blade.
- » PCS® eliminates the hazardous situation in milliseconds.
- » PCS® is 100% safe against damage to machine and saw blade.
- » PCS® allows safe operation close to the saw blade.
- » PCS® also supports groove cuts.
- » PCS® is ready to be used again at the push of a button.
- » PCS® requires no additional maintenance and cleaning cycles.
- » PCS® works without additional, external sources of energy and without the need of external sensors or video systems.
- » PCS® is resistant to dust and dirt.

PCS® does not replace any of the statutory protective devices. According to regulations, the machine must be operated with splitter and sawguard.



Always at hand & clearly visible – front tool compartment

On request, we will equip your kappa with an integrated tool compartment to accommodate 4 saw blades with a maximum diameter of 450 mm, plus 2 riving knives.

Details



Intuitive "smartouch"-control with touchscreen

Control systems
kappa 450 x-motion: 10" touchscreen

The central operating unit with touch screen provides ergonomic and intuitive control of all the machine's axes. The in-house software with graphical user interface, a multitude of programs, a USB interface and the prepared network connection make work easier and guarantee efficiency and productivity. The USB interface for importing and exporting data is prepared for network connection and remote maintenance.

Program storage:

- » Tool database (incl. scoring unit position on the 2 axes scoring unit and scoring unit Control)
- » Cutting programs (general)
- » Programs for each function
- » Storage of the last five values entered
- » Import and export of the tooling database, program storage
- » Remote maintenance via Teamviewer

Functions

- » Park position (rip fence, scoring unit control)
- » Movement of the axes in jogging mode
- » Incremental movement of the axes
- » Calculator
- » Administrator Functions

Cutting programmes / outrigger table functions / crosscut fence:

- » Mitre
- » Compound Mitre Cut (except with controlled crosscut fence)
- » Processing cutting plans of a cutting optimisation software
- » Mitre cut

Cutting programmes / functions in connection with an automatic rip fence:

- » Rebates
- » Groove
- » Rows of grooves
- » Bevel cut

"Power Drive" control kappa 450

Using a knob for quick adjustment, you can adjust the cutting height and cutting angle. A push button is available for the fine adjustment. Red LED display screens in the control panel show exact adjustment values. When the blade angle is tilted the height setting is compensated with the LED display showing the exact blade height.

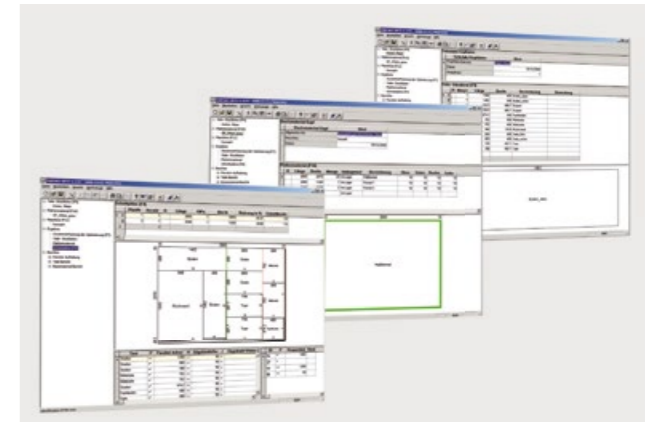


FORMAT 4®



Label printer

Not only does the label printer enable the workpieces to be labeled correctly, it also enables a logical post-processing. For example, programs for successive work processes on CNC machines and edgebanders will be imported from the barcode scanner. Save valuable production time with the label printer and increase productivity, quality and as a result, your profit.



Ardis Cutting Optimisation Software

Thanks to the integration of the Format4 cutting optimisation program into the machine and operating concept, all work steps can be carried out efficiently and quickly from one central location. Thanks to the easy handling and the clear, user-friendly display, no training is necessary.



Electronic crosscut fence

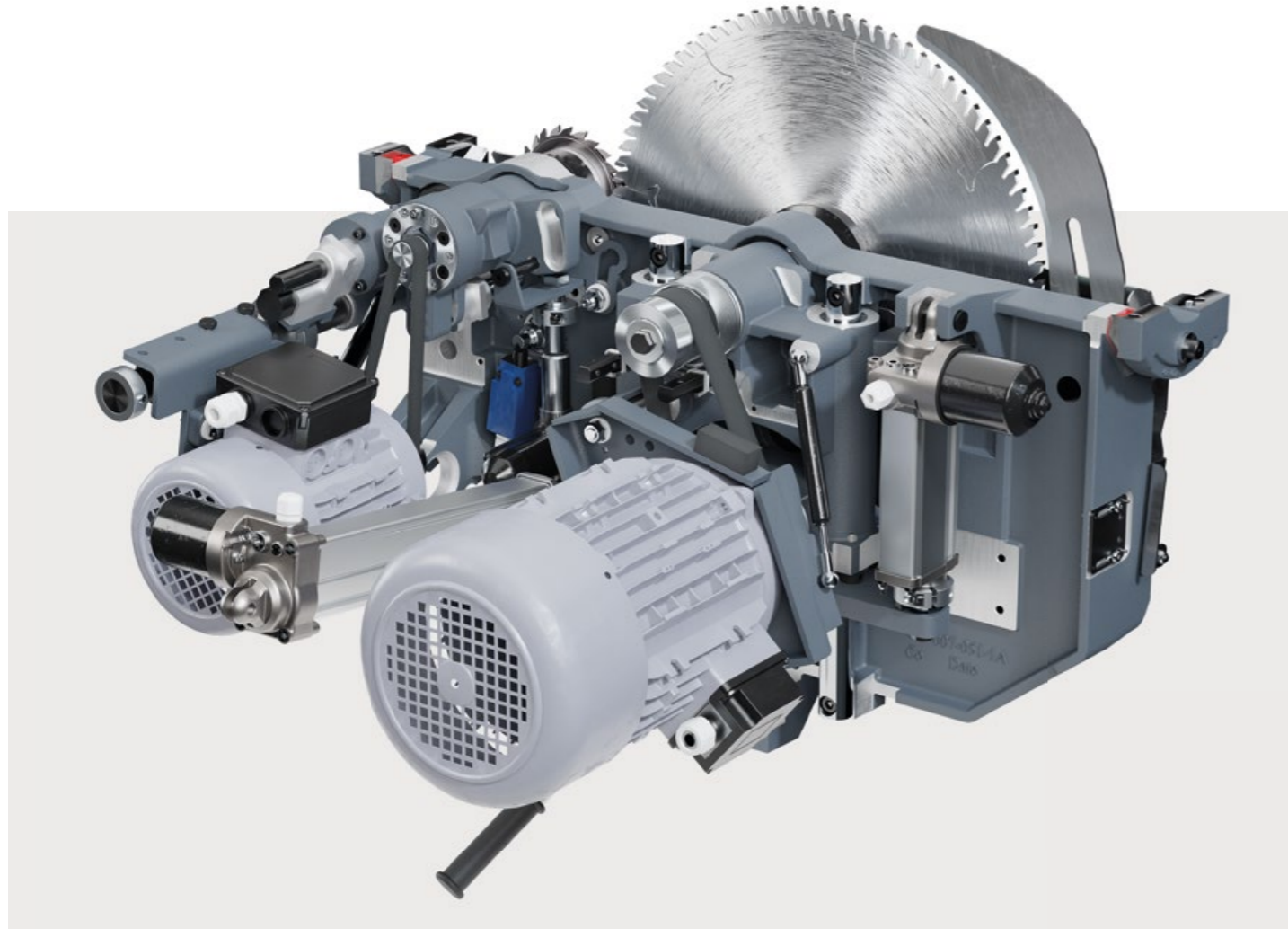
x-motion models can be equipped with the electronic crosscut fence. The controlled crosscut fence can be used on both sides of the outrigger and is equipped with two fence stops. The maximum adjustable length measures 3400 mm. The extendable component can be removed to save space. The length compensation takes place automatically depending on the angle set.

- » Electronic crosscut fence with 2 crosscut stops and extendable to a maximum of 3400 mm
- » Automatic angle-length compensation



Transport and mounting unit for outrigger table

At last: Quick, comfortable and effortless, removal and mounting of your outrigger table using the transport and mounting unit. And another positive aspect: your outrigger can be conveniently stored away!



The Saw Unit "155"

The new, heavy-duty cast iron Format4 saw unit offers maximum power, utmost precision, smooth operation and efficiency:

- » 155 mm cutting height with a blade diameter of 450 mm
- » Saw blade tilt 0°–45°
- » Tilt segment "Easy-Glide" for circular saw unit
- » Oversized saw arbor with double trunnions
- » 3-axis "Control" scoring unit
- » Scoring unit park position
- » Aensational: saw blade change without tools
- » Spraying unit for processing non-ferrous metals and plastics



Spraying unit for processing non-ferrous metals and plastics

For the machining of non-ferrous metals or plastics, your Format4 can be equipped with a spraying unit. High performance lubricating oil can be sprayed directly onto the saw blade, transported via piping from the spraying unit.

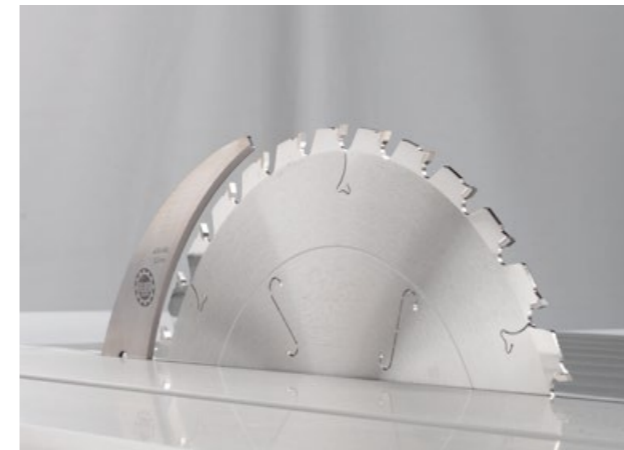
Grooving work

Thanks to the removable circular saw flange and table insert, adjustable dado tools up to 19.5 mm can be used.



Oversized saw arbor with double trunnions

- » Absolute vibration-free machining
- » Incredible power transmission due to the ultra efficient Poly-V-belt drive technology
- » Standard: Speeds 3500/4500/5500 rpm; with 10 kW motor power speeds of 3500 and 4500 rpm are possible
- » On request: continuously variable speed 2000–6000 rpm



Cutting height

With a cutting height of 155 mm at a 90° blade tilt and 109 mm at a 45° blade tilt, the kappa 450 easily handles trimming and rip cuts in solid wood and cross- or mitre cuts of oversized cross sections.



Saw blade tilt 0°–45°

109 mm cutting height at 45° blade tilt; depending on the set mitre angle, the cutting height is compensated on the "Power-Drive" display or, in the case of the kappa 450x-motion, on the touchscreen and shows the ACTUAL height of cut.



"Easy-Lock" tool free saw blade change

The clamping system offers premium comfort for many years: Effortlessly change saw blades and riving knives literally in the blink of an eye.



Simple, safe & quick – "Quick-lock" saw blade clamping

Quick and easy blade change with only one tool, thanks to the "Quick-Lock" system.



**The Scoring Unit.
Powerful and efficient.**

Choose from four types of absolutely powerful scoring saw units:

- » "Classic" with a scoring blade Ø 120 mm
- » "Automatic" with automatic raising and lowering
- » "2-axis controlled", height and lateral position
- » "Control", with 3 controlled axes (height, width, lateral offset) and park position

All units combine tried and tested operation with drive technologies for perfect scoring results. Guaranteed by the scoring saw blade diameter of 120 mm and the speed of 8600 rpm (10,200 rpm at 60 Hz).



Safety made visible – Scoring unit operation display

A red LED strip immediately signals the operation of the scoring unit and offers even more working safety. Option

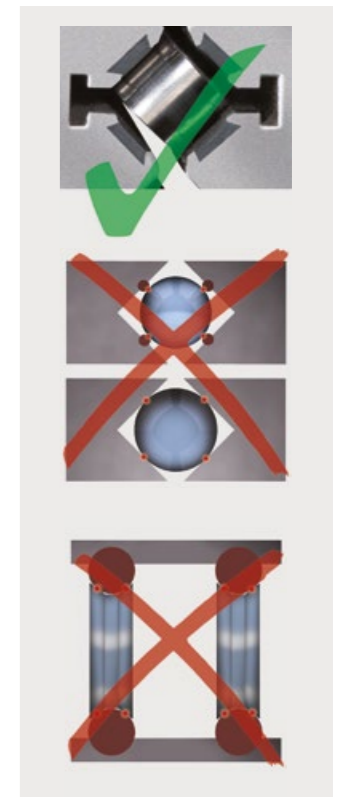
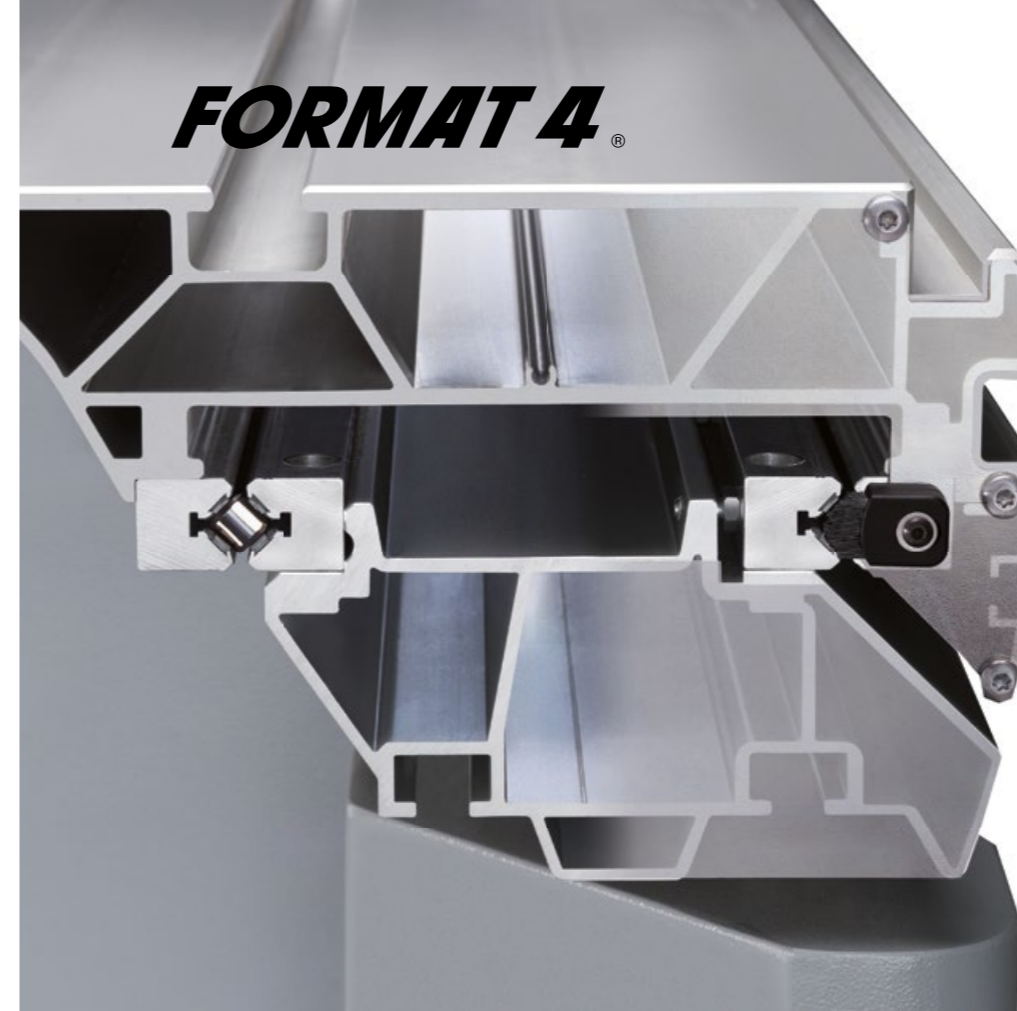


3-axis "Control" scoring unit

The scoring unit blade width and height adapt automatically to the stored tool information and also to the respective teeth width of the main saw blade. Any changes to these standard scoring settings can be saved and retrieved when using the same tool in the future.

Scoring unit park position

The scoring blade no longer needs to be removed when using a larger saw blade. The new Format4 "parks" the scoring unit at the touch of a button, which frees up space for large saw blade diameters and saves you valuable production time! The park position also protects the scoring unit from dirt and resin build-up.



**"A masterpiece of engineering",
guarantees precision and smooth operation!**

Large dimensioned and designed with highest use in mind, the aluminium format sliding table "hovers" on the "X-Roll", a highly developed, state-of-the-art guiding technology for Format4 sliding tables. The X shape ("X-Roll") design of the rollers distributes the load optimally on all sides. The linear surface of the steel rollers running on the hardened and ground guiding surface guarantees unbeatable precision and smoothness. "X-Roll" will guarantee you the quality and precision that you expect from your new panel saw. And here's another reason why one should opt for Format4: a 10-year factory warranty emphasises the reliability of the "X-Roll" guiding system.



This is why:

- » Extremely smooth, long life guiding system! The roller bearings have no single point of contact!
- » The dust resistant construction
- » Hardened and ground guide tracks
- » 10 Year warranty: on "X-Roll", the Format4 sliding table guiding system!



On and off switch on the sliding table



The overhead saw guard

The Format4 overhead saw guard is elegantly integrated into the machine design. The operation is simple and comfortable. In one movement, the overhead saw guard can be unlocked and swung completely out of the entire machine table area. The extraction hood adjusts itself automatically to the workpiece height and offers optimum working safety and extraction performance.

The suspension of the overhead saw guard is offset more than 600 mm to the back of the saw shaft. This means that extra-long workpieces such as kitchen countertops can be cut to length without any problems.



Overhead saw guard with below table extraction

The newly developed overhead saw guard and under table extraction system deliver perfect extraction results. The overhead saw guard with its distinctive design is easily adjustable in height over linear guides. The dust and shavings are sucked from the saw guard into the extraction pipe via a short hose. The below table extraction system encloses the entire saw unit. In terms of extraction technology, the chip duct is perfectly shaped, and an optimised chip flow from the scoring unit also ensures absolutely perfect extraction results.

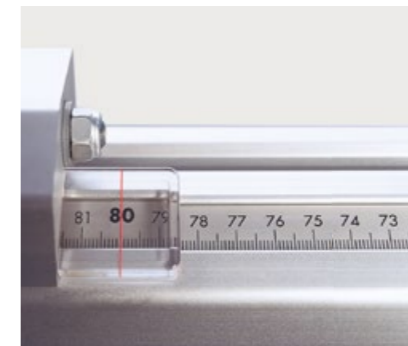


On the right track – Laser cutting line marker

The maintenance free linear laser is mounted to the overhead saw guard and can be adjusted to any position. The easily visible cutting marker makes it easier to trim or cut along cracked wood.

Precision miter guide index system outrigger table

No time wasted trying to find the correct angle and one hundred percent precision in adjustment and positioning, without any reading errors, are just some of the advantages of the precision mitre index system. Highly precise index points enable the exact production of polygons such as e.g. 5.625° (32 sides), 11.25° (16 sides), 22.5° (8 sides). Additional index points at 15°, 20°, 25°, 30°, 35°, 40° and 45° can be used when the crosscut fence is both at the front and at the back of the outrigger. Every index position is provided with length compensation. The highly precise Felder mitre index system is adjusted at the factory and every index position can also be individually fine adjusted. The index system integrates itself well into the machine design and will increase your productivity for an amazingly low investment amount.



Digital and accurate to a tenth of a millimetre

On request, we supply your Format4 with the digital outrigger crosscut fence. The stylish integrated electronic digital display shows the adjustment accurate to a tenth of a millimetre. Additional functions, such as the adjustment of chain dimensions, simplify your daily work.

Even more flexible – Ergonomic locking lever at the crosscut fence

The crosscut fence on the outrigger table can be easily and quickly tilted variably from zero to 45°. The large dimensioned, ergonomic clamping lever can be used at every angle.

Crosscut fence (outrigger)

The outrigger crosscut fence allows you to perform crosscuts up to 3200 mm. Even the standard version already provides you with top-class technology and comfort. The scale that is tilted towards the operator and the lens on the crosscut fence guarantee precise settings.

PCS® PREVENTIVE CONTACT SYSTEM

PCS® revolutionizes safety solutions for sliding table panel saws. The worldwide only system that uses the saw blade as the sensor to recognise human tissue within the danger zone in just a few milliseconds. In case of danger, the saw blade automatically drops under the table at extremely high speed without causing any damage.

Surveillance of danger zone with approach detection

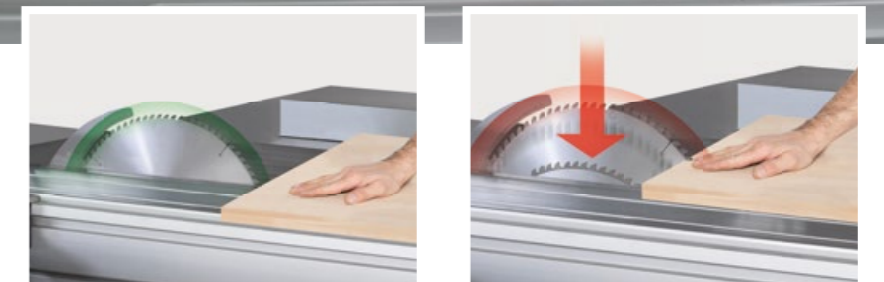
Upon detection of an unexpected, fast approach within the saw blade area, PCS® triggers the safety mechanism, lowering the blade. The safety environment surrounds the saw blade and protects against access from all directions.

Immediately ready for use and resistant to dust and dirt

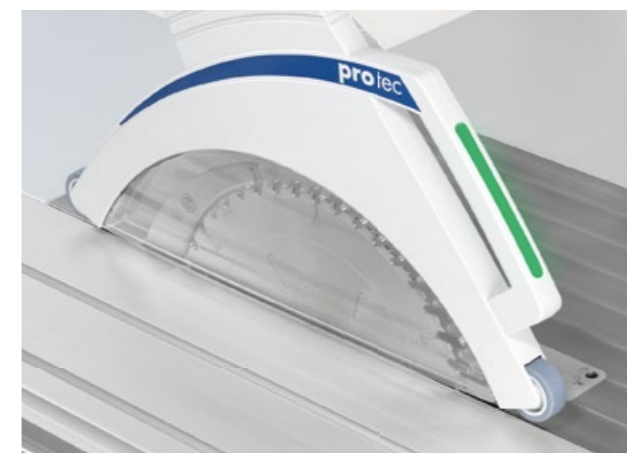
After triggering, the sliding table panel saw is immediately ready for use again. There are no costs due to wear parts or any external energy sources, PCS® does not require any additional maintenance and cleaning. PCS® does not use external sensors or video systems and is therefore unaffected by dust and dirt.



FORMAT 4®



Discover all PCS® models, remarkable detailed solutions and the currently world's fastest non-contact triggering safety device – PCS® in our new video.



PCS® signal lamp integrated in the overhead saw guard
A signal light is integrated on the handle of the overhead saw guard which indicates the operating status of the PCS® to the operator.



Standard rip fence on round bar guide

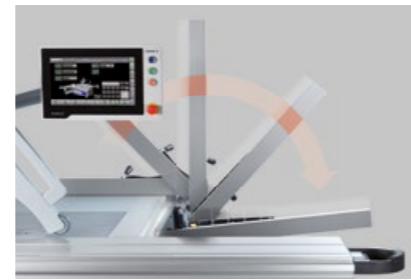
- » Table scale as standard
- » Fine adjustment as standard
- » Option electronic digital display for standard rip fence
- » Option positioning control, read-out of cutting width on electronic digital display

The rip fence is guided smoothly, almost hovering, over the round bar guide on the sliding table saw. The single-hand quick release and the fine adjustment guarantee a fast and precise adjustment of the rip fence to the desired dimension! The alumi-

um fence can be adjusted for better workpiece infeed or brought into a face down position when machining narrow workpieces with a tilted saw blade.

Electronic digital display can be read from every position.

The rip fence can be equipped with an electronic digital display. The perfect integration of the whole electric unit makes it possible for you to rotate the display by 90°, and as such the settings can be read from the operator side in every rip fence position. Additional functions such as the use of incremental cuts



Positioning control of the rip fence

The rip fence is positioned by a motor and runs via a dust-free integrated ball spindle in the saw table. The 1/10 mm precision, the high positioning speed, as well as the simultaneous positioning of the crosscut fence, saw blade height and saw blade angle ensure precision and save valuable working time.

- » Automatic measurement correction when the rip fence is laid flat
- » Rip fence park position
- » A collision between rip fence with saw blade is avoided by coordinating the tool database with the positioning control system.
- » The rip fence can be swung away at any point along the full rip capacity

also help to make day to day work easier.

More Highlights:

- » Easy to read values, with a bright, red LED display
- » No batteries required as it is connected to the power supply of the machine
- » Automatic recognition, whether the fence is in the vertical position or laid flat
- » Compensation for the tooth width of the saw blade



The crosscut fence on the format sliding table

The crosscut fence is adjusted for mitre cuts between +45° and -45° using the mitre index scale integrated in the format sliding table. The T-slot and lateral holders on the format sliding table allow for quick assembly without tools. The scale facing the operator and the read-out lens on the fence stop ensure precise settings up to 1100/2050 mm.



Pneumatic workpiece holder

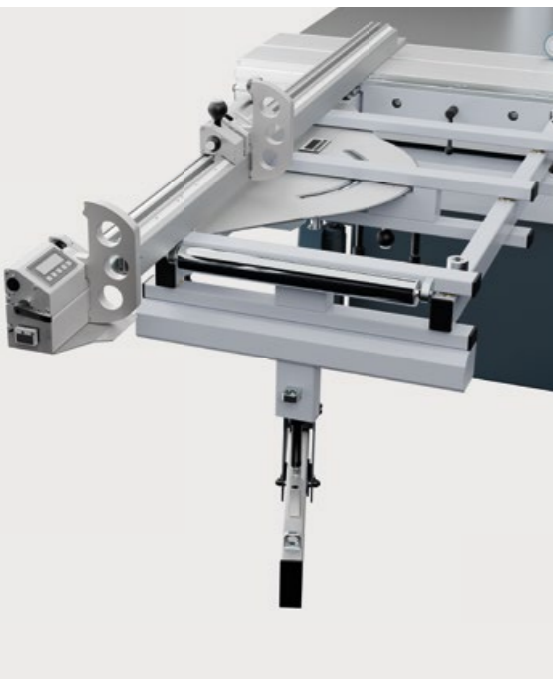
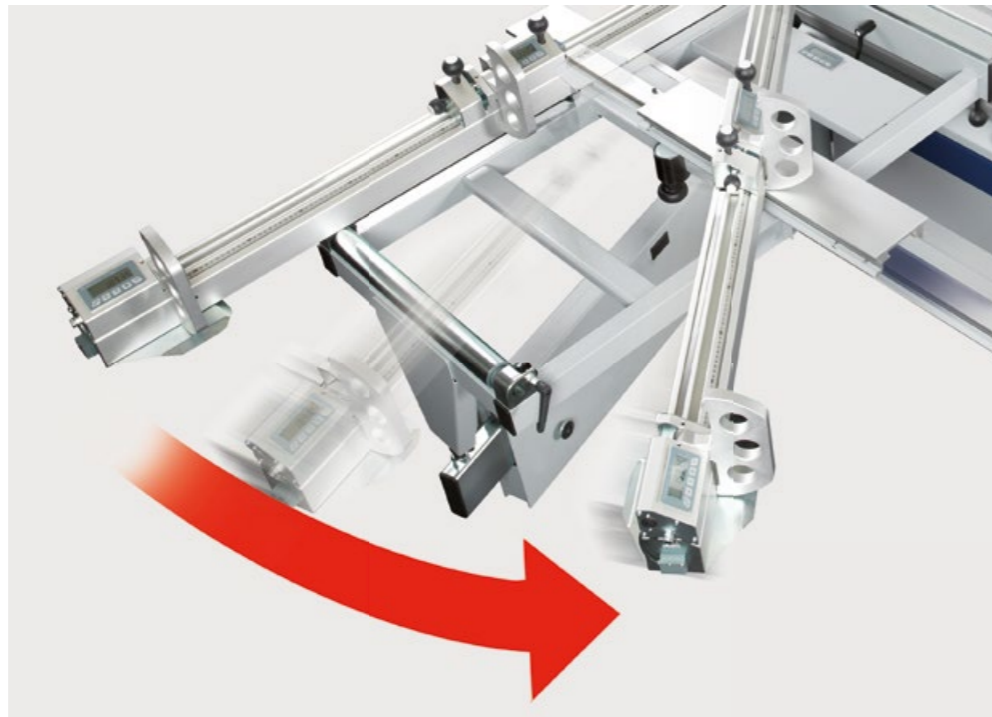
- » Easy clamping of workpieces with maximum flexibility. Can be used on all panel saws and spindle moulders that are equipped with a sliding table.
- » Easy set up due to magnetic fittings
- » Safety cylinder ensures maximum working security
- » Pressure bar function is possible with every sliding table length
- » Clamping height 95 mm
- » Clamping force approx. 300 kg

Silent-Power® saw blades and much more available in our Felder Group online shop



“X-Roll” outrigger table

Outrigger table supported by 8 ball bearings, integrated guide rollers and bearings for maximum smooth running at the highest loads. High precision and maintenance free „X-Roll” rollers guide the micro adjustable support rail which provides a large-surface support even when the outrigger table is swivelled. It is possible to set the angle to an accuracy of 1/100° using the digital display. The continuously variable tilt range between -45° and +45° ensures precise mitre cuts.



Parallelgram outrigger table

Continuously variable adjustment range from -46° to +46° It is possible to set the angle to an accuracy of 1/100° using the digital display.



“digi-compensation plus” – digital angle/length compensation

The digital angle and length compensation module “digi-compensation plus” for “X-Roll” or parallelogram outrigger tables compensate any changes in the length difference of the crosscut fence settings, as the angle is changed. The direct communication with the controls, also enables it to compensate the fence position of the crosscut stop to the width of the tooth and the tilt of the saw blade. This ensures that you always get an exact measurement without any recalibration when using different saw blades.



Full surface support on the outrigger table

The full surface and magnetic mounted supports on the outrigger table offer an increased support surface and guarantee a secure hold and stable support for the processing of smaller workpieces.

Technical specifications

		kappa 450	kappa 450 x-motion
Electrics			
001	3x 400 V motor voltage	S	S
002	3x 230 V motor voltage	W	W
004	50 Hz motor frequency	S	S
005	60 Hz motor frequency	W	W
007	Motor 5.5 kW (7.5 HP) S6/40%, 3 speeds 3500/4500/5500 rpm.	S	S
008	Motor 7.35 kW (10 HP) S6/40%, 3 speeds 3500/4500/5500 rpm.	O	O
009	Motor 10 kW (13.5 HP) S6/40%, 2 speeds 3500/4500 rpm (I002)	O	O
10	STAR-delta-START	S	S
12	Switch contact for the control of an extractor	O	O
17	Motor 7.35 kW (10 HP) S6/40%, with continuously adjustable speeds 2000–6000 rpm !200	-	O
13	Operating hour meter	O	S
Panel saw drive			
-	Saw unit 90°–45°	S	S
-	Saw blade diameter 250–450 mm, max. cutting height 155mm	S	S
201	Electrical height and angle adjustment of the saw blade with digital LED display („Power-Drive” K2)	S	-
71	Tool compartment for up to 4 saw blades with max. diameter of 400 mm	O	O
82	Dado capability for tooling up to 19.5 mm width	O	O
73	Spraying unit for processing of light metals and plastics (!1000)	O	O
74	Scoring unit “Classic”, 1.1 kW, scoring blade-Ø 120 mm in combination with max. saw blade-Ø 400 mm (with the scoring blade removed max. saw blade-Ø 450 mm)	O	O
75	“Automatic” scoring unit with automatic rise and fall of the scoring blade, 1.1 kW, scoring blade-Ø 120 mm in combination with max. saw blade-Ø 400 mm (with the scoring blade removed max. saw blade-Ø 450 mm)	O	O
69	Scoring unit 2-axes controlled: height and lateral position	-	O
76	Scoring unit aggregate “Control” with 3 controlled axes (height, width, lateral offset) and park position, 1.1 kW, scoring blade-Ø 150 mm in combination with max. saw blade-Ø 400 mm, adjustment range 3.0–3.8 mm, max. saw blade-Ø in park position 450 mm	-	O
77	Flange set for scoring unit with shaft diameter 22 mm instead of 20 mm for the scoring units “Classic” and “Automatic”	W	W
79	Scoring unit status light (mandatory option when in combination with PCS® and scoring unit)	O	O
78	“Easy lock” – Tool-free quick change system for the main saw blade	O	O
780	“Quick-Lock” – Quick change system for the main saw blade and riving knife adjustment, drive pins in the flange prevent it from twisting	O	O
72	Fine adjustment of the rip fence	S	S
Control			
1000	Preventive Contact System – PCS® (!17) The safety device must be deactivated before cutting electrically conductive materials. Does not replace any other safety device. The machine must be operated with overhead saw guard. !!Available as of 2024!!	O	O
21	x-motion control 10" colour screen with touch function on the control panel at eye level. USB interface and preparation for a network connection; The panel can be positioned optimally in the working area of the operator and be completely swung away if necessary	-	S
23	Plug-in connection for the removal of the overhead saw guard and overhead control panel for special transports	-	O
Safety devices			
-	Overhead guard, hood for 90° and hood for mitre cuts, which is height adjustable and can be swung away from the working area	S	S
80	LASER cutting line marker on the overhead saw guard	O	O

Cutting width and parallel fence		kappa 450	kappa 450 x-motion
-	800 mm rip capacity	S	S
83	Cutting width 1250 mm	○	○
84	Cutting width 1500 mm	○	○
85	Rip fence with digital display and automatic cutting width compensation when the saw blade is tilted, fence plate 1200 mm, can be swivelled (184)	○	○
891	Position-controlled rip fence with digital display at eye level on the control panel, cutting width 800 mm	-	○
892	Position controlled rip fence with digital display on the control panel at eye level, 1250 mm rip capacity	-	○
893	Position-controlled rip fence with digital display at eye level on the control panel, cutting width 1500 mm	-	○

Anodised sliding table, "X-Roll" guiding system		kappa 450	kappa 450 x-motion
132	"X-Roll" Format sliding table, cutting length of 2050 mm	○	○
133	"X-Roll" Format sliding table, cutting length 2500 mm, edging shoe	S	S
134	"X-Roll" Format sliding table, cutting length 2800 mm, edging shoe	○	○
135	"X-Roll" Format sliding table, cutting length 3200 mm, edging shoe	○	○
140	"X-Roll" Format sliding table, cutting length 3700 mm, edging shoe	○	○
136	Anodised sliding table	S	S
139	On and off switch on the sliding table	○	○

Outrigger tables and crosscut fences		kappa 450	kappa 450 x-motion
160	Outrigger table 1500 mm with outrigger crosscut fence 3200 mm	S	S
161	The 1250 x 650 mm "X-Roll" outrigger table with moveable support rail and digital angle display	○	○
162	1250 x 650 mm outrigger with parallelogram adjustment and digital angle display (1140)	○	○
173	Precision mitre index system for crosscut fence tilt with cutting length compensation	○	○
164	1100 mm crosscut fence for all sliding table lengths	○	○
165	Telescopic extension for crosscut fence 1100 mm to 2000 mm	○	○
-	3200 mm crosscut fence, tiltable 90°-45°, 2 crosscut stops	S	S
167	3200 mm crosscut fence with fine adjustment, tiltable 90°-45°, 1 digital crosscut stop up to 1900 mm, telescopic fence with analogue crosscut stop up to 3200 mm.	○	○
168	3200 mm crosscut fence with fine adjustment, tiltable 90°-45°, 2 digital crosscut stops	○	○
169	Crosscut fence with controlled fence stop, range of movement 120-1760 mm, removable telescopic extension up to 3400 mm cutting width with second fence stop (#161/162) (1160)	-	○
175	Crosscut fence with two digital stops, incl. calculation of the length compensation when the fence is tilted (#161/162) Digi compensation plus	-	○

General		kappa 450	kappa 450 x-motion
-	Working height in mm	890	890
-	Min. transport width in mm	1000	1000
-	Extraction connection Ø in mm (unit/saw guard EURO II standard overhead saw guard)	120/100	120/100
-	Weight kg (with standard configuration)	930	950

Important accessories		kappa 450	kappa 450 x-motion
220	604-110 - Parts list holder with A4 clipboard	-	○

Transport		kappa 450	kappa 450 x-motion
221	Container packaging	W	W

S Standard Equipment | ○ ... Optional | W ... Choice Not available

Product range

Sliding Table Panel Saws



Shapers



Planer



Edgebanders



Wide Belt Sanding Machines



Heated Veneer Presses

HVP heated veneer press With Elkom® electric heating platens with warm water heating with thermal oil heating connection to an existing heating system

CNC machining centres



Nesting-CNC Machining Centres



Industrial Panel Saws



Vacuum panel lifter Return systems Feeding Units



FORMAT 4®

FORMAT4 Uncompromising expertise for the highest of requirements

The Felder Group premium brand has met the highest standards of professional users since 2001.

The customised high-performance solutions are uncompromisingly innovative, offer maximum operating comfort and complete productivity.

FELDER GROUP

KR-Felder-Straße 1
A-6060 HALL in Tirol

🇬🇧 Tel. 01908 635000

www.format-4.uk

[Contact](#)

🇮🇪 Tel. 0906625756

www.format-4.ie

[Contact](#)

🇮🇳 Tel. 1800 274 3040

www.format-4.in

[Contact](#)

🌐 Tel. +43 5223 58500

www.format-4.int

[Contact](#)