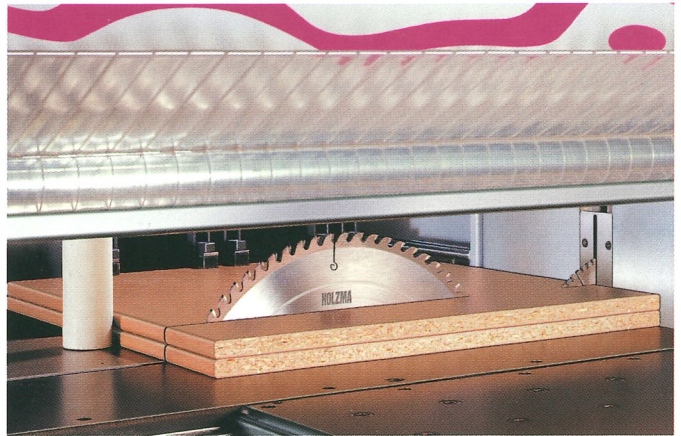
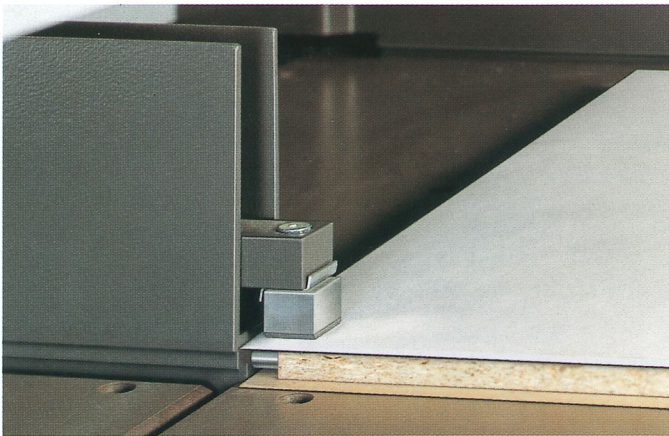
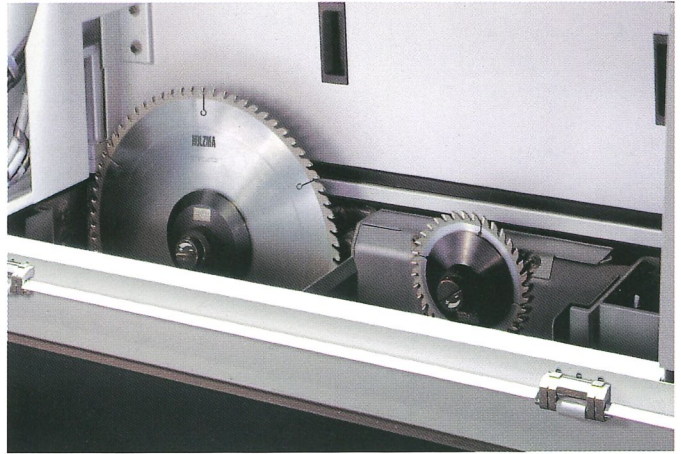
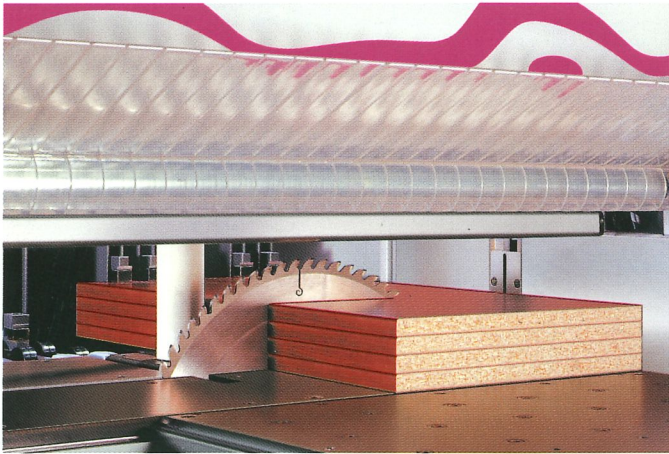


Panel Cutter Optimat HPP 11

Chipfree, finished cut –
accurate, versatile,
economical

We are strong in details



Trimming – perfect and proven in practice

No chipping of projecting veneers or laminates. Alignment by pins locating the core panel. Perfect clamping despite of projecting surface.

Powerful clamps

always have a perfect grip on panels.

Online transfer of cutting patterns

from the optimizing program with the possibility of label-printing (option).

Gradually raising scoring saw

The raising scoring saw unit guarantees chipfree crosscutting of postformed or softformed parts.

Simple, graphical input

of cutting patterns.

Error diagnosis in plaintext.



Optimat-CADmatic-control
HPP 11/43

No compromises in performance – but significant price advantages!

Optimat:
High-Tech does not have to be expensive!

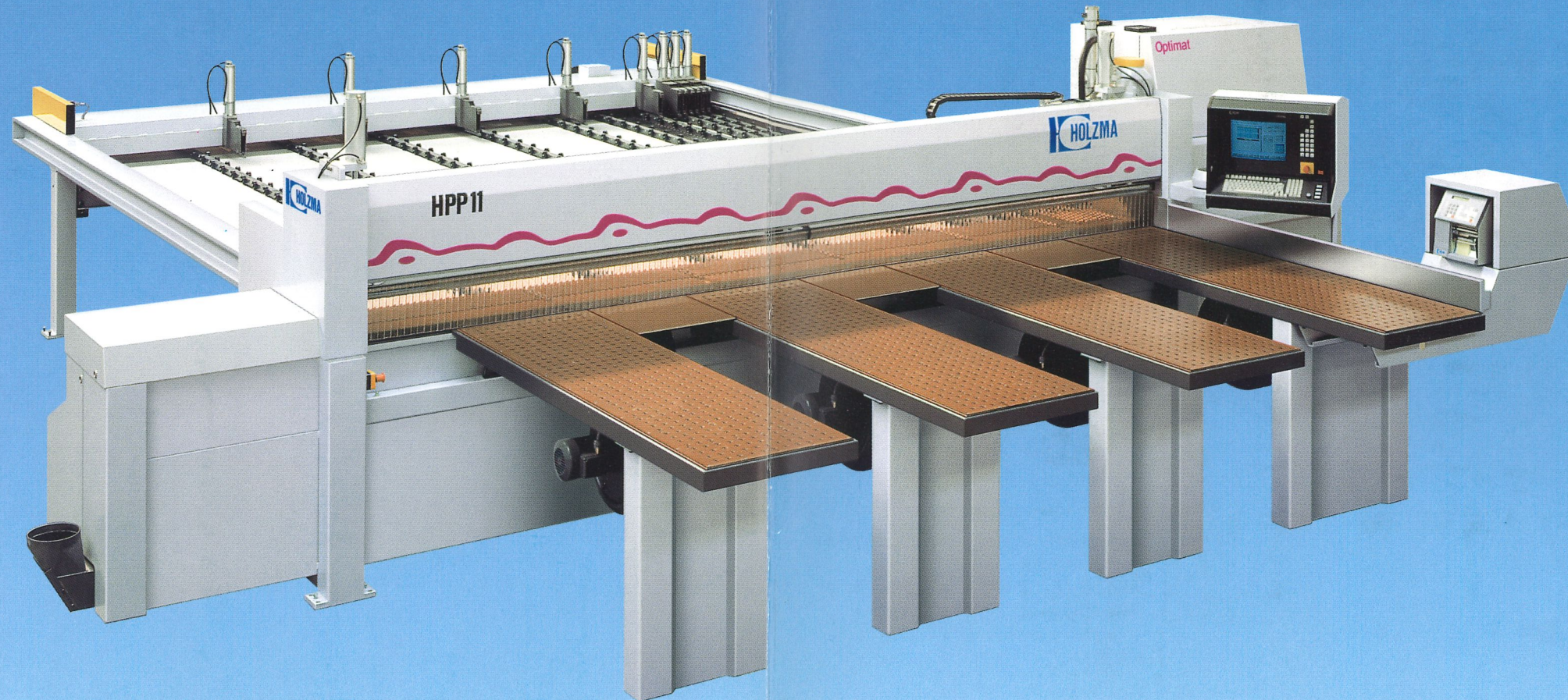
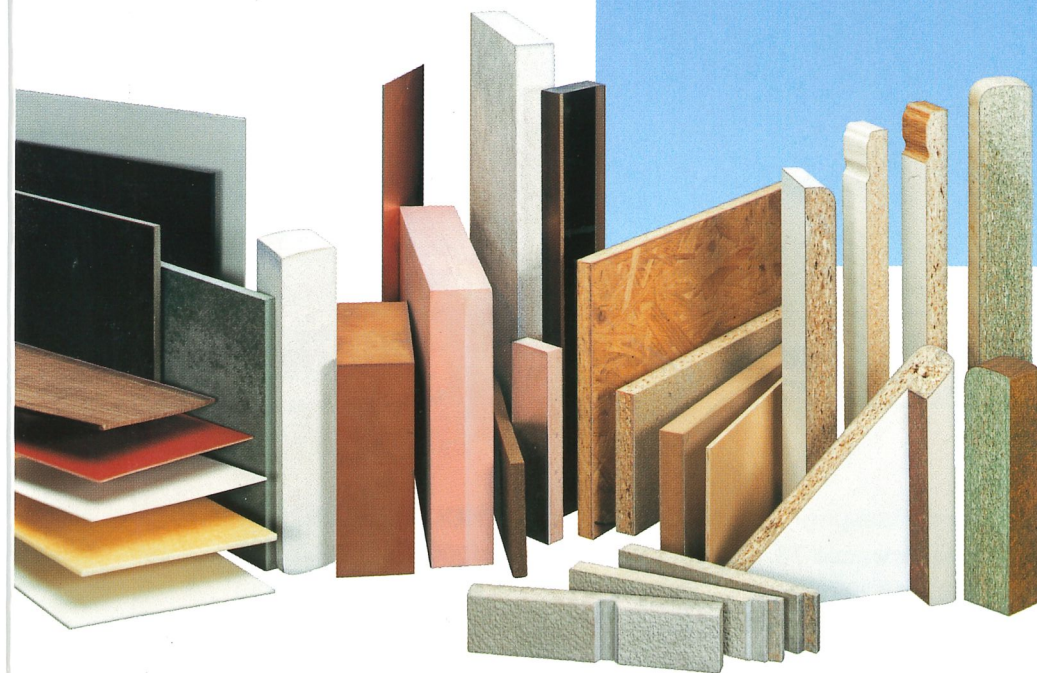
The "Optimat" series, presented by the Homag-Group, is a new machine generation. All "Optimat" machines have the same high technology, the same legendary German quality and reliability, which the Homag-Group has been offering from the outset. But since the "Optimat" machines are batch produced, the price is definitely more attractive. And you also gain from short delivery and installation times.

No matter if you are a cabinet maker, shopfitter or doing architectural fabrication – if you cut single sheets or books of panels: HOLZMA is the most efficient solution for you, in any case. No compromises in panel cutting – decide now for the best, the HOLZMA Optimat!

All materials

The Optimat cuts all panel materials:

- particle board, raw and laminated
- MDF and HDF boards
- solid wood
- high pressure laminates
- gypsum and cement based boards
- acrylic and plastic sheets



Optimat HPP 11/43

Excellent quality

Production, service and sales of our company are approved according to DIN EN ISO 9001 (TÜV CERT). This provides you with the constant quality you are looking for!

Stronger means faster

The HOLZMA Optimat is a most precise pressure beam saw in a heavy, solid construction. With a main saw drive of 13,5 kW! For you this means considerable savings in time, because, quite simply, you can cut faster!

Automatic = saving time

Automatic cutting length eliminates down times. Automatic cutting height guarantees optimum cutting quality. Automatic side pressure device results in accurate, square cuts.

To be on the safe side

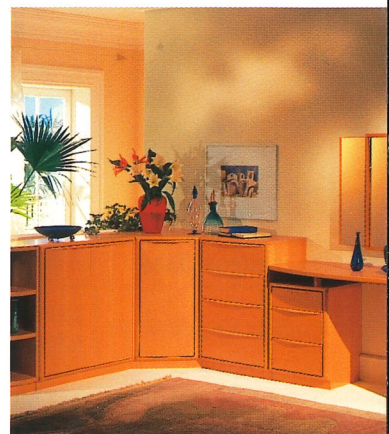
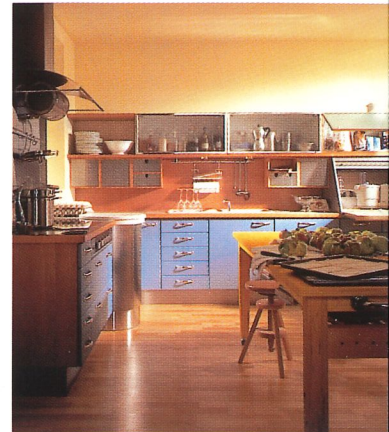
Our machine is not set "behind bars": There is free access and excellent view on it. Each moveable part is designed as such that there is no danger of injuries.

"Floating on air"

Even large panels or books can easily be moved on the large-surface air tables.

Accurate finished cut

The non-contact electro-magnetic measuring system guarantees a positioning accuracy of the program fence of +/- 0,1 mm.



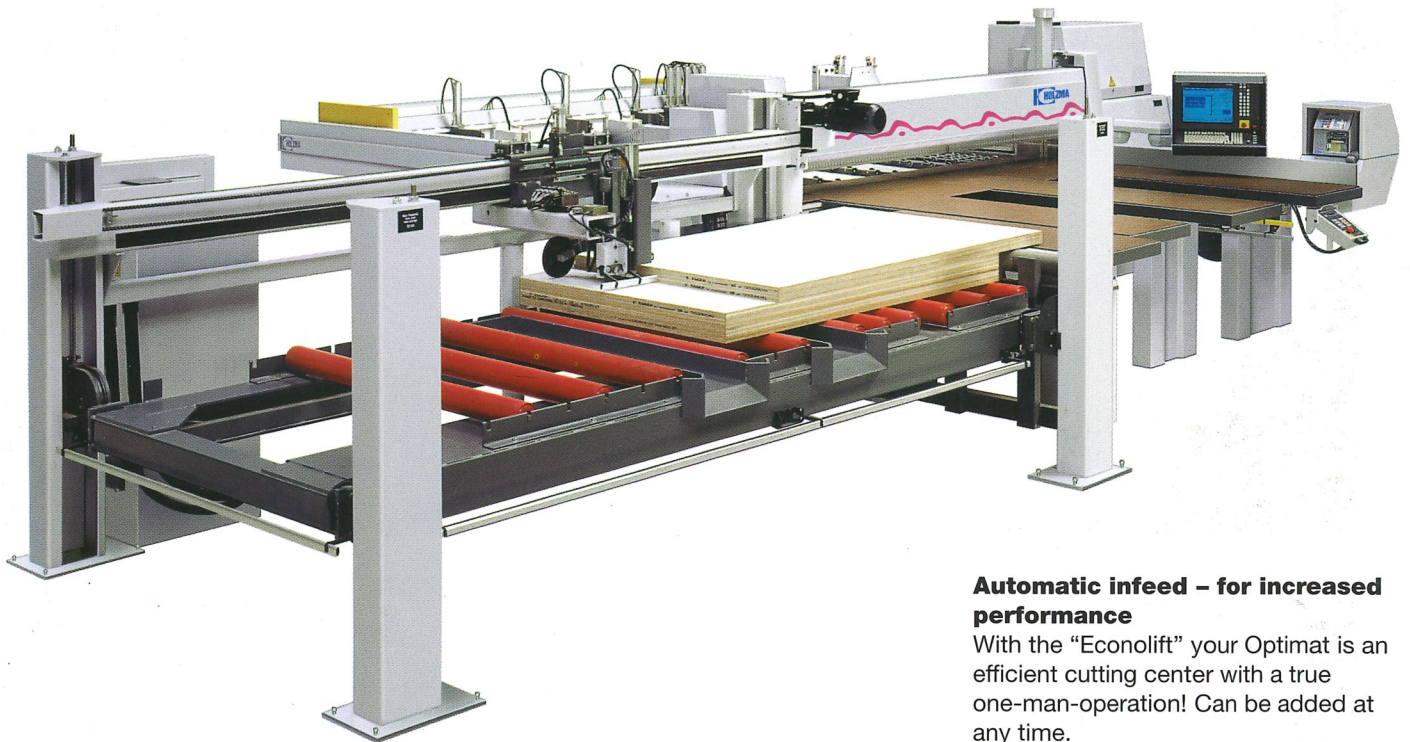
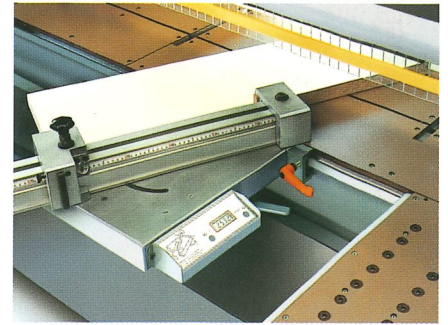
Your Optimat becomes a Specialist with our Options



Even more comfortable, more economical, more versatile!

Mitre fence

Diagonal cuts can easily be carried out by means of a template. For frequently changing diagonal or mitre cuts, the mitre fence is recommended with digital display.

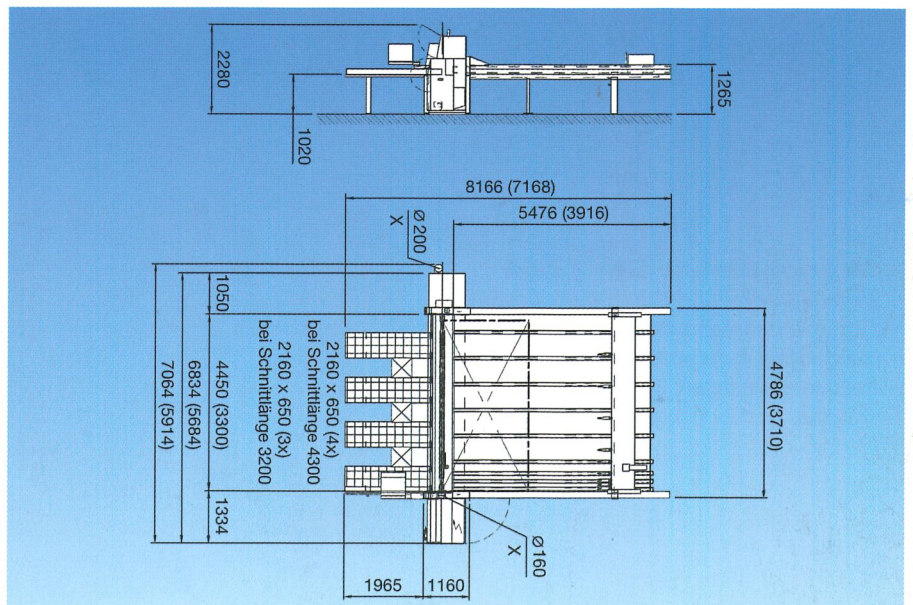


Automatic infeed – for increased performance

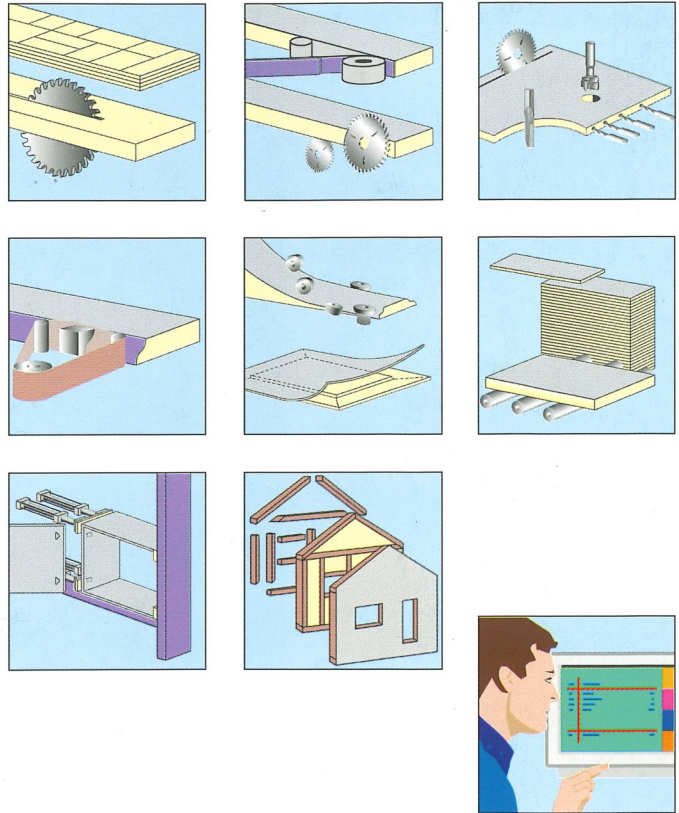
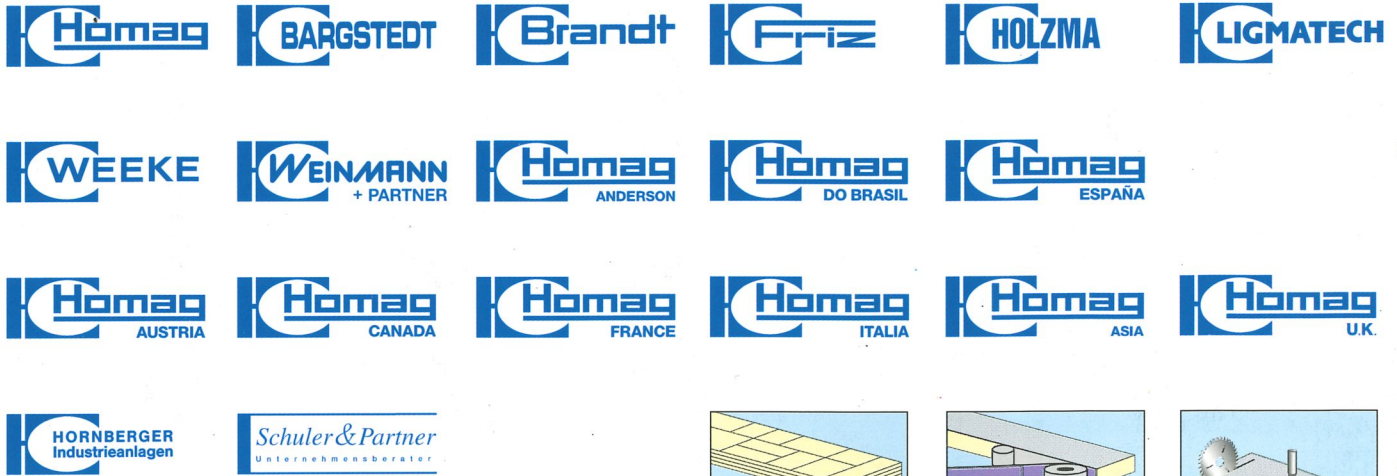
With the “Econolift” your Optimat is an efficient cutting center with a true one-man-operation! Can be added at any time.

Technical Data

Cutting length/width	3200 mm 4300 mm
Saw blade projection	125 mm
Main saw motor	13.5 kW/18 HP
Scoring saw motor	2.2 kW/3,0 HP
Total connected load	17.5 kW/24 HP
Compressed air	6 bar
Total air volume with 6 bar	20-30 l/min
Extraction	4500 m ³ /h (26 m/sec)



The Homag-Group



F 256 e/1.99/4 Sch Certain details of the provided specifications and photos may deviate from the supplied product. We reserve the right to make changes in the interest of progress.



HOLZMA-Maschinenbau GmbH
 Holzmastrasse 3
 D-75365 Calw-Holzbronn
 Tel. 0 70 53/69-0
 Fax 0 70 53/61 74

Niederlassung
 Dieselstrasse 73
 D-33442 Herzebrock-Clarholz
 Tel. 0 52 45/12 06
 Fax 0 52 45/15 39

HOLZMA=U.S., INC
 1200 Tulip Drive,
 Gastonia, NC 28052
 Tel. 704-861-8239
 Fax 704-867-4140