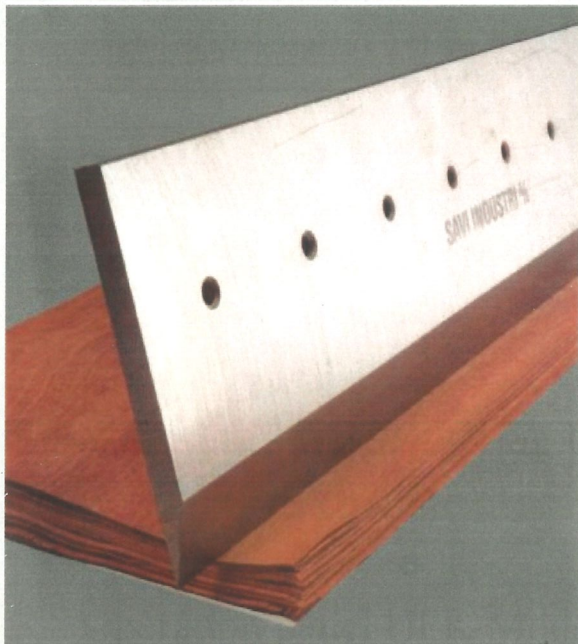


## Operation panel HFK Model



The operation panel is in the FT version equipped with two additional push buttons for operation of the cross knife.



### Security

Savi machines are constructed with a view to the highest security of the operator and assistants without causing inconvenience to the working.

In the SAVI guillotines the following precautionary measures are built in:

**Electric safety light barrier** of knife and pack beam forms part of the standard equipment. The opening in front of the knife and pack beam is covered by rays. In case those are broken pack beam and knife will immediately return to the upper position and they cannot be moved until the rays are again unbroken.

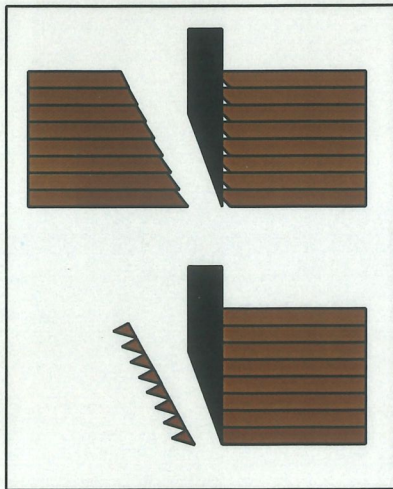
**Guard.** The parallel fence and the rear opening to the pack beam are covered by a guard on the reverse of the machine. Nobody can therefore come in and touch movable parts.

# www.savi.dk

## SAVI INDUSTRI A/S

Haandvaerkervaenget 1, P.O.Box 1082, Gundsoemagle  
4000 Roskilde, Denmark  
Telephone +45 46730966 – fax +45 46731881  
e-mail: info@savi.dk





## Second cut

Second cut can be necessary when working with a thick or a hard veneer.

When cutting through veneer more than 1 mm thick the wedge effect of the knife causes cracks in front of the blade resulting in an irregular edge.

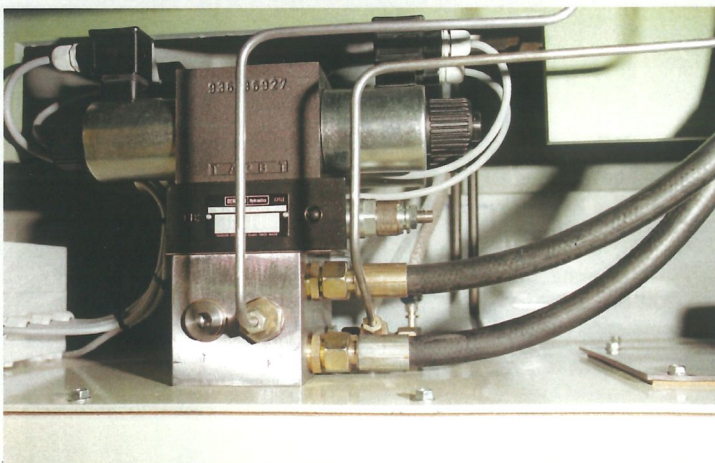
When using the knife in second cut position a thin chip appr. 1 mm is cut off the pack. The wedge effect of the knife has no influence, and the perfect cut ensures a perfect joint.

SAVI Guillotines are equipped with a hydraulic second cut device. Just one press on the button after the actual cut, the knife is moved appr. 1 mm against the pack, while pack beam is still in lower position.

All SAVI veneer guillotines are completely hydraulic on both knife and pack beam. This causes that the pressure on knife and pack beam is individually adjustable, and no mechanical damage will injure the machine, if the machine is overloaded. That means seen from a safety point of view - that knife and pack beam will return to top-position immediately, if the cutting cycle is broken.

All SAVI veneer guillotines go through a sequential product development to be at the front edge with the best and newest technology and quality.

All models are designed with safety as the highest priority.



All SAVI guillotines are equipped with a central hydraulic block system, that minimizes the risk of leakages.

When cutting thicker veneer it is possible to increase the pressure for the knife and pack beam on the hydraulic block.

## SAVI INDUSTRI A/S

Haandvaerkervaenget 1, P.O.Box 1082, Gundsoemagle  
4000 Roskilde, Denmark  
Telephone +45 46730966 – fax +45 46731881  
e-mail: info@savi.dk