

# CNC-Processing Center

## Venture 2



2005



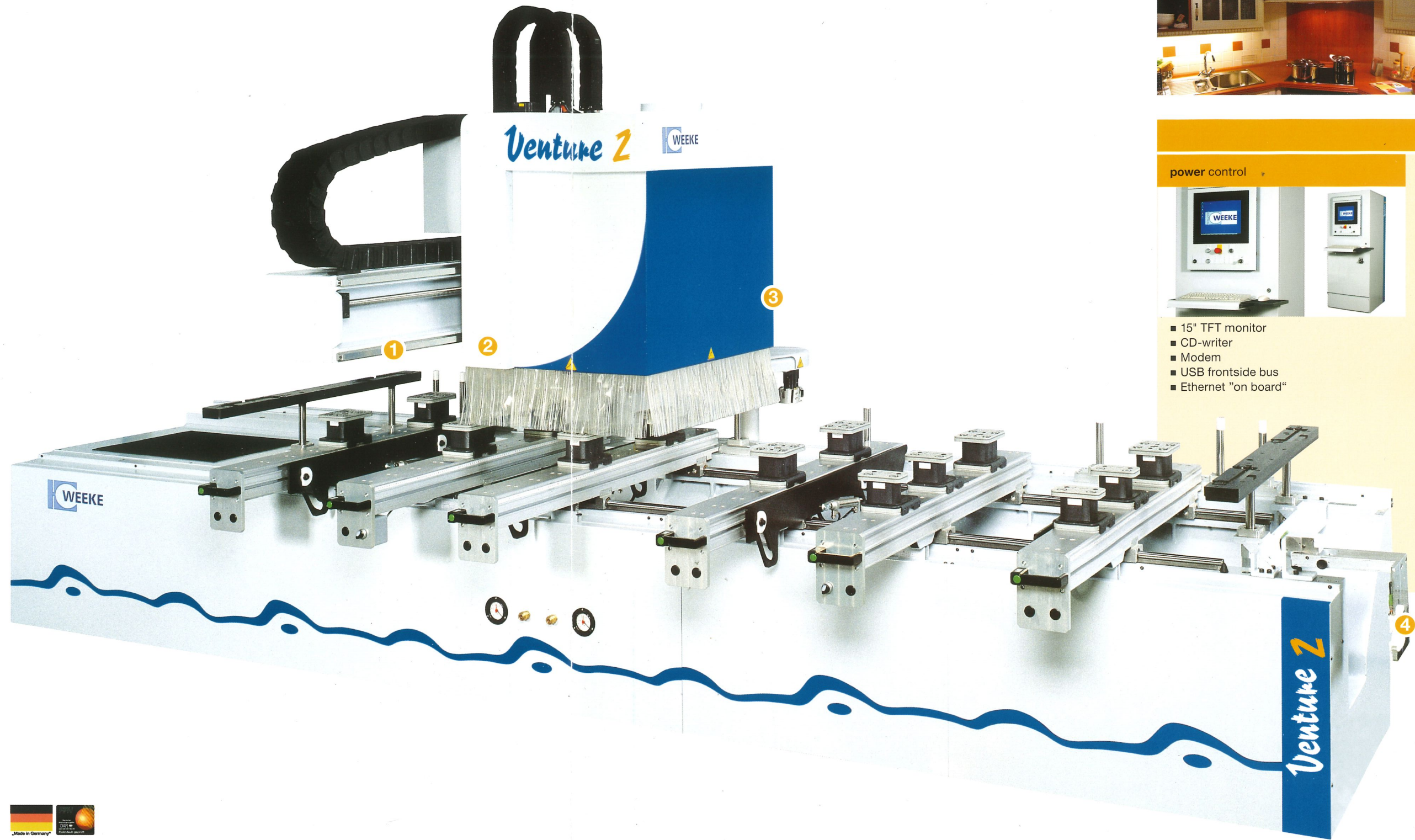


# Venture Z

**Working field:**  
3250 x 1250 x 100 mm

**Highlights:**

- Torque support to hold adapter aggregates
- Even under heaviest processing the heavy steel ribs within the frame absorb any resonance and frame flexing.
- A powerful 7.5 kW HSK routing spindle
- 2 Z-axes
- Routing dimension in Y-direction to max. 1378 mm
- 8 tool changing places
- A flexible clamping system with the Weeke K-Table
- Simple pneumatical fixing of the consoles
- Secure positioning of the vacuum cups via laser positioning
- UPS „uninterrupted power supply“ - protects the computer against damages in case of mains interruption. In such a case the computer is powered down to avoid loss of data.



**power control**



- 15" TFT monitor
- CD-writer
- Modem
- USB frontside bus
- Ethernet "on board"



**1 Linear guiding system**



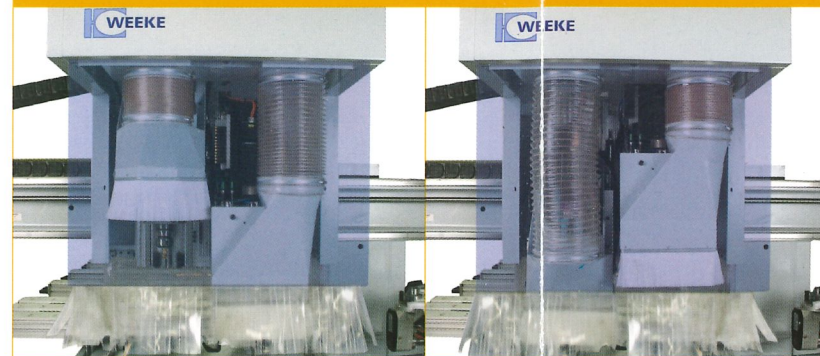
Sealed "long-life" linear guiding system

**2 Laser positioning**



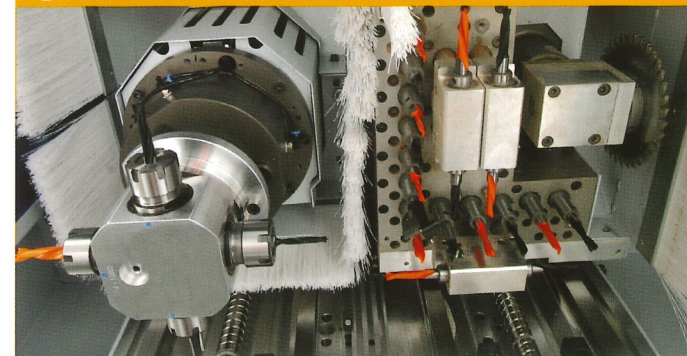
Simple positioning of the vacuum cups through the pin laser

**2 Z-axes**



Offer an optimal dust extraction and a bigger operative range for processing tools

**3 Configuration**



■ 12 vertical drilling spindles ■ 6 horizontal drilling spindles  
■ 1 routing spindle with 7.5 kW ■ 1 grooving saw (Ø 125 mm / 90°)

**4 Tool pick-up station**



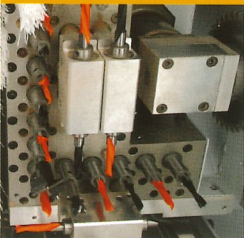
Secure fitting of the tool changer

Pictures may also show options



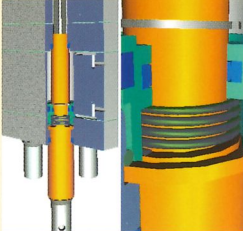
## All inclusive – "Standards"

### High-Speed spindles



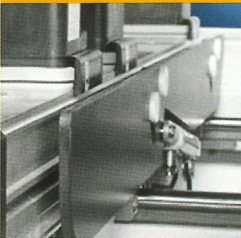
1500 - 7500 RPM

### Automatic spindle locking system



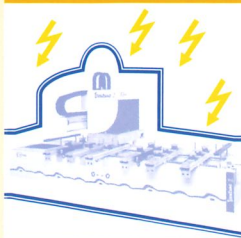
Exact drilling depth at any time with different materials

### Workpiece feeding rail



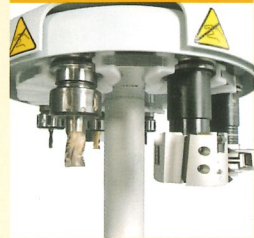
4 solid feeding rails for easy feeding of heavy workpieces

### UPS



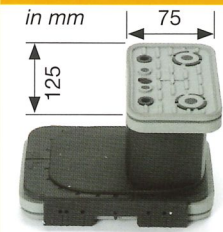
Protects the computer against damages in case of mains interruption

### Tool changer



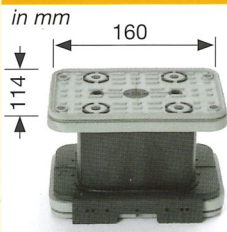
8-fold tool changer in X-direction

### Vacuum cups



4 narrow vacuum cups

### Vacuum cups



10 standard vacuum cups

### Torque support



To hold adapter aggregates

### Sealed energy cable



Secure and protected cable guide (X-Y-Z)

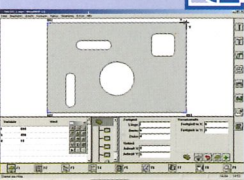
### Tool kit



Top equipment - from the very start

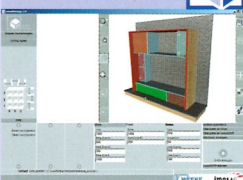
## Software

### woodWOP



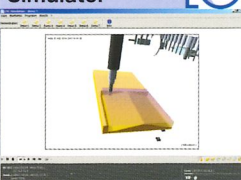
- Modern software based on Windows®
- More than 10.000 installations worldwide

### woodDesign



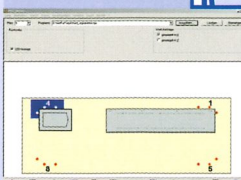
- Simple 3D construction of furniture including a parts list output and export of cutting lists

### 3D CNC-Simulator



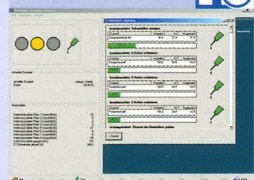
- Simulates the processing in the order it is stored in the NC-program
- Allows time calculation
- Collision check of the vacuum cups

### MCC

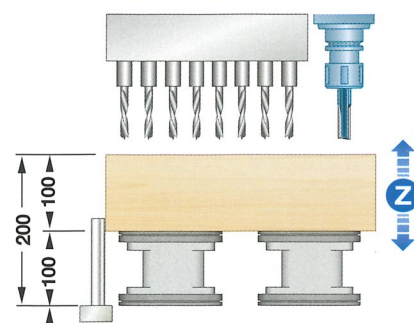
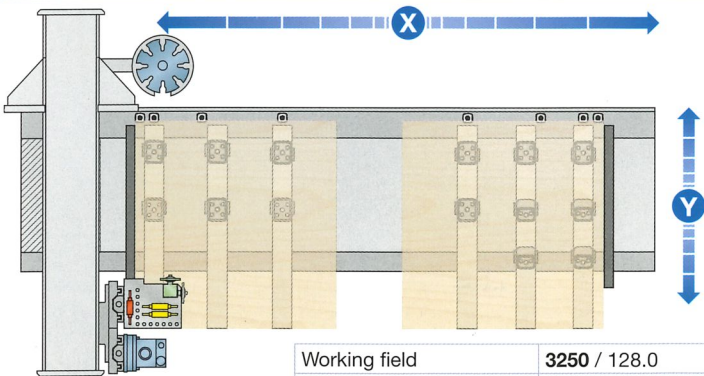


- Modern and simple control of main machine functions through soft keys
- Graphical loading
- Optimized space

### MDR



- Machine Data Recording - collecting and evaluating machine states via time meter and event meter



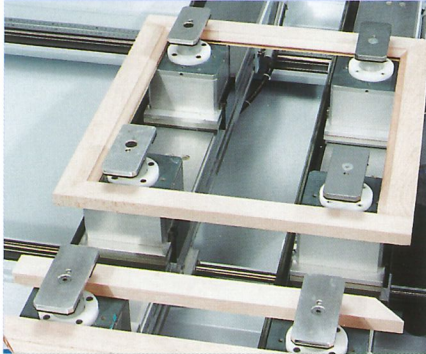
Working field	3250 / 128.0	1250 / 49.2	100 / 3.9
Travel range	3860 / 152.0	1793 / 70.6	185* / 7.3 (300** / 11.8)
Routing	3595 / 141.5	1378 / 54.3	100 / 3.9
Alternating operation	1450 / 57.0		
Two-field operation	1100 / 57.0	mm / inch	

\*drilling | \*\*routing



# Options *Venture 2*

## Multi-clamping system



E.g. for frame and narrow parts

## Tilting stops for laminate overhang



Guarantee simple positioning of panels with laminate overhang

## Software



■ DXF-postprocessor ■ Barcode software

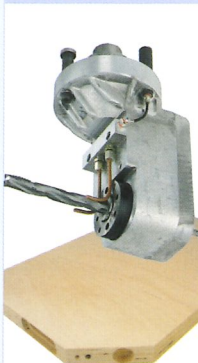
## Adapter aggregates

### Drilling - manual tiltable



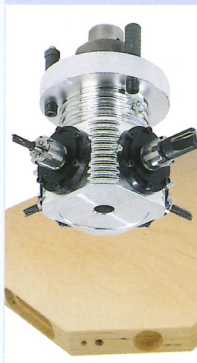
1622

### Cam box router Ø 16 mm, 2 spindles



1626

### Routing, 4 spindles



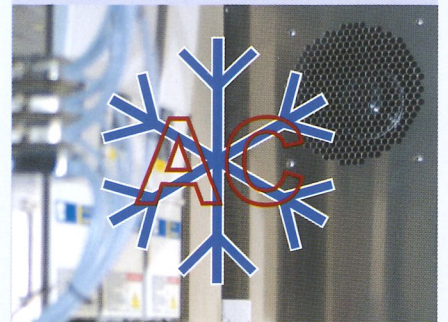
1605

### Routing vertical with tracing bell



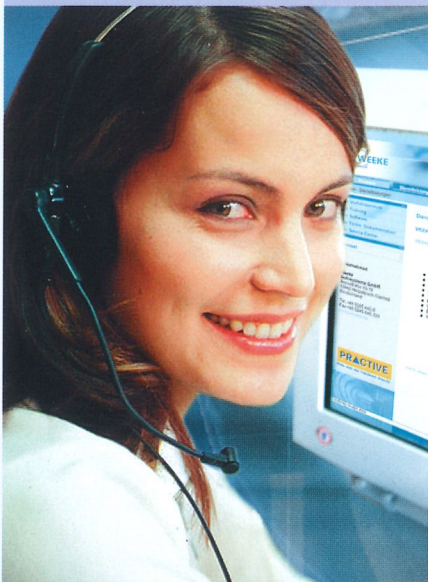
1650

## Air-conditioning



Air-conditioned cabinet

## You may contact us - WORLDWIDE - at all times!

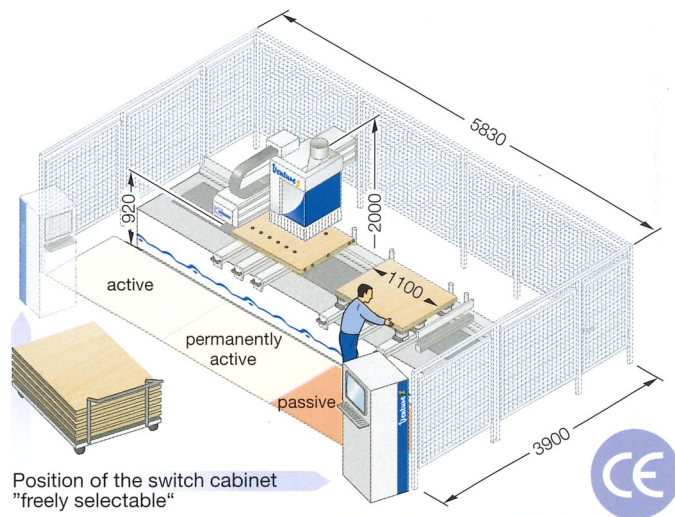
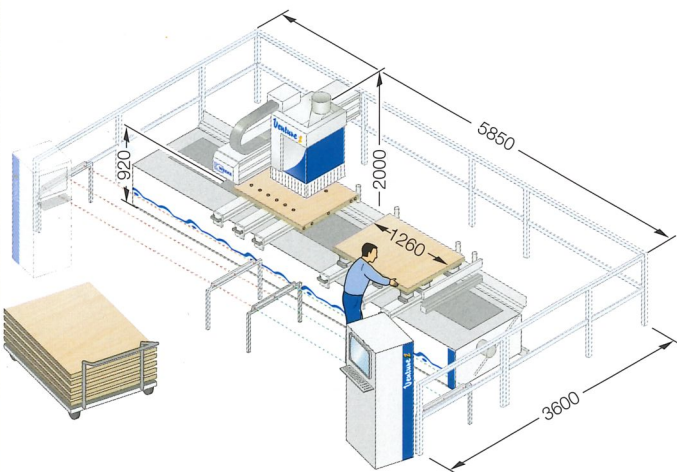
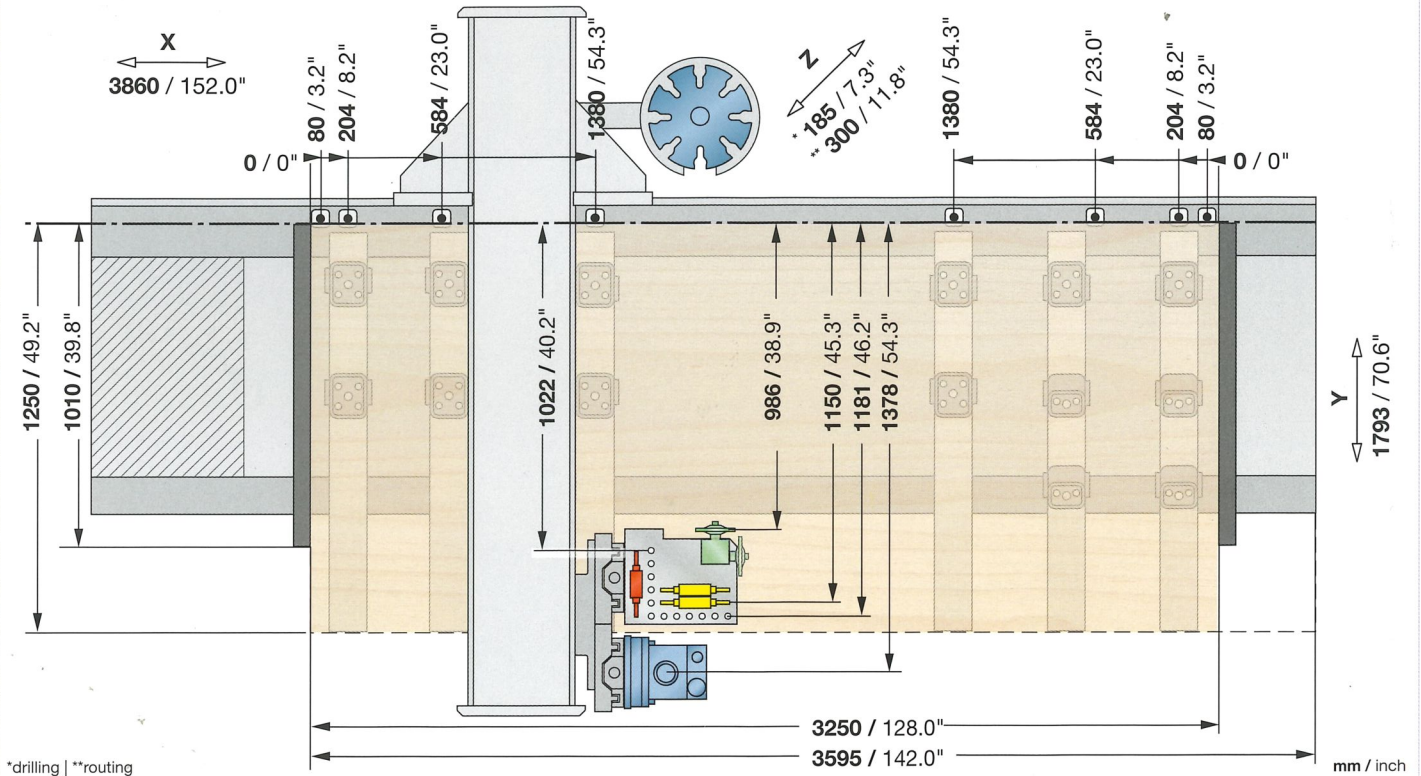


- Teleservice possibility via basic-modem-connection
- Competent spare parts service
- Weeke communication: up-to-date information at all times:  
[www.weeke.com](http://www.weeke.com)
- Any questions, new ideas, criticism & praise to:  
[info@weeke.de](mailto:info@weeke.de)





# Venture 2



## TECHNICAL DATA

Travel range X - Y - Z-axis	mm	3860-1793-185*/300**
Rapid traverse speed X - Y - Z-axis	m/min	60 - 50 - 15
Compressed air connection	Zoll	R 1/2"
Compressed air required	bar	7 bar
Dust extraction port	mm	Ø 200
Dust extraction volume	m³/h	min. 3170
Total machine weight	kg	ca. 4300
Electrical power - total connection load	kW	16
Switch cabinet L - W - H	mm	800 - 800 - 1970



## WEEKE Bohrsysteme GmbH

Benzstraße 10-16  
 33442 HERZEBROCK-CLARHOLZ  
 Germany  
 Phone: +49 5245 445-0  
 Fax: +49 5245 445-139  
 info@weeke.de - www.weeke.com