

# ABD 260 Optimat CNC-Drilling and Dowel Inserting Machine







## Drilling and dowelling – and always keeping a tight grip on everything The Result: **YOUR SOLUTION**

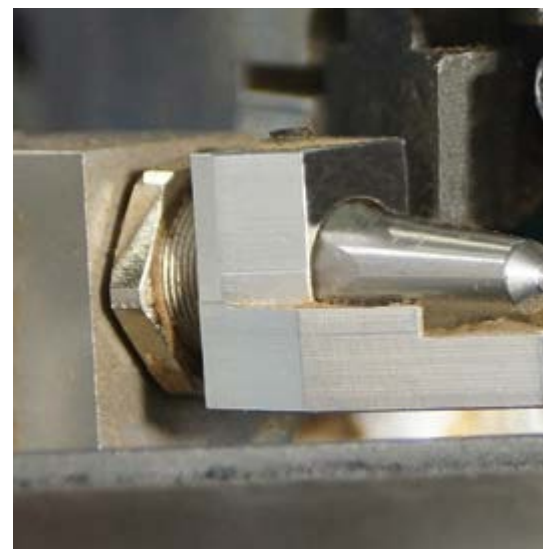
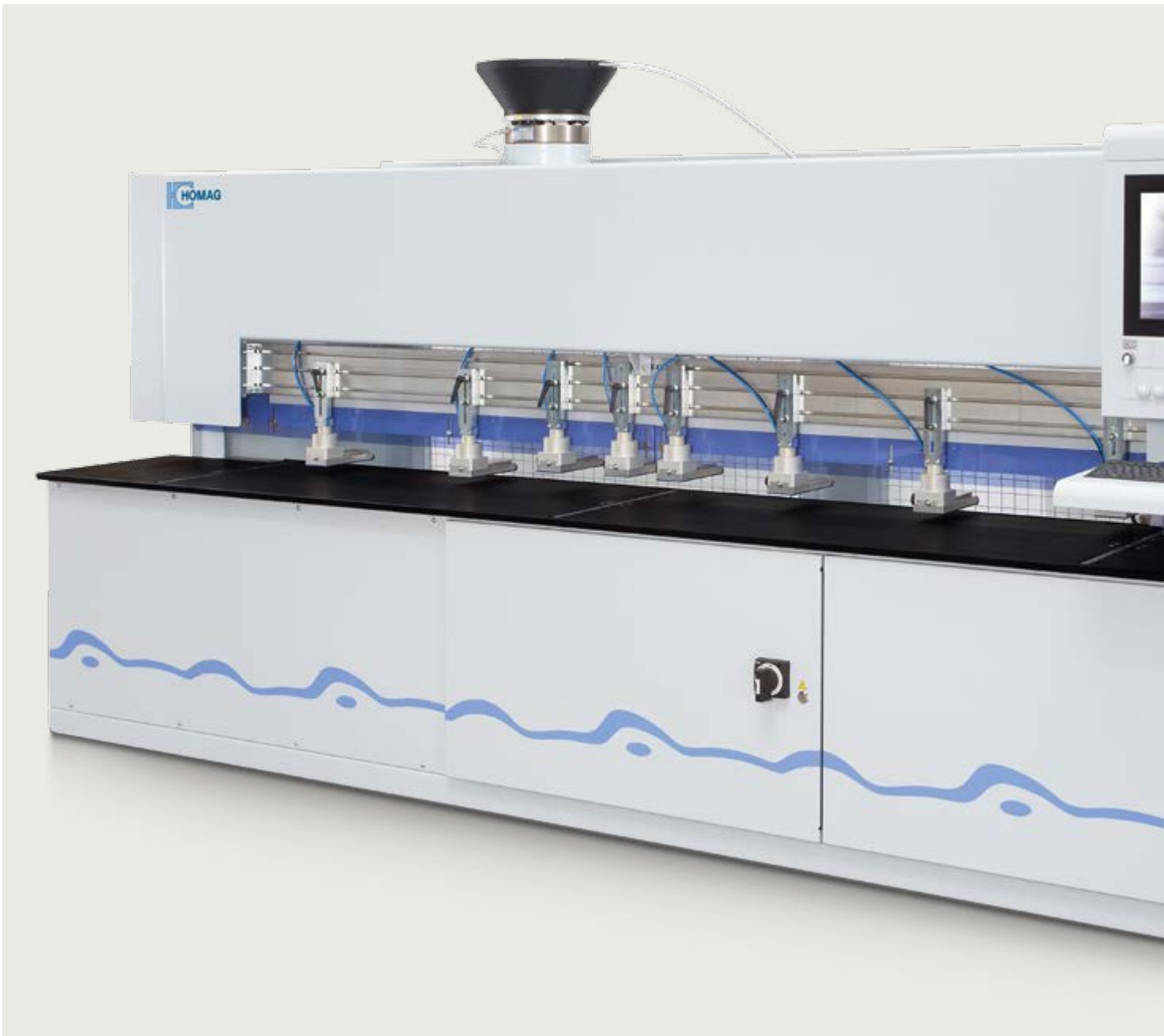
Whether as individual machine or complementary product in connection with a CNC processing center – the ABD has got exactly two tasks: drilling and dowelling – making the machine more efficient than ever before.

Here you will find more: [www.homag.com](http://www.homag.com)

### Contents

- 04 ABD 260 Optimat | Highlights
- 06 All inclusive
- 08 Hardware – Software
- 10 Technical Data







# ABD 260

## **AXIS | X-, Y- AND Z-DIRECTION: CNC-CONTROLLED**

### **INCREDIBLY FAST...**

High-speed drilling and dowel insertion aggregate for accurate drill holes and precise positioning of dowels

### **KEEPING A TIGHT GRIP...**

By using up to 8 clamping cylinders, adjustable to length and thickness, any workpiece is held firmly

### **BENEFICIAL...**

The lowerable center stop allows for flexible handling of workpieces thereby ensuring an optimum two-field operation

### **PROVIDES SILENCE...**

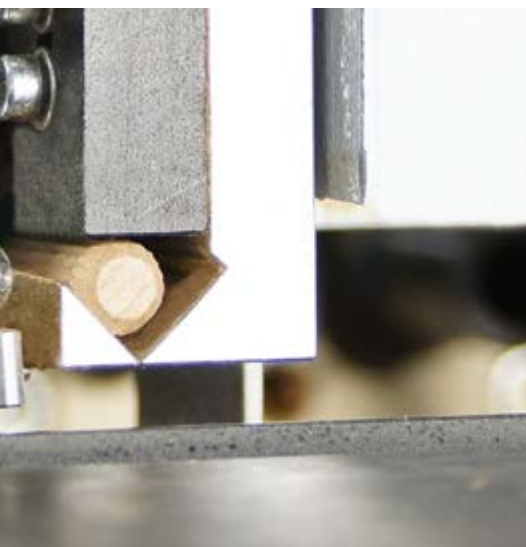
Heavy and sturdy machine bed made of SORB TECH for vibration-free operation (up to 2.2 t)

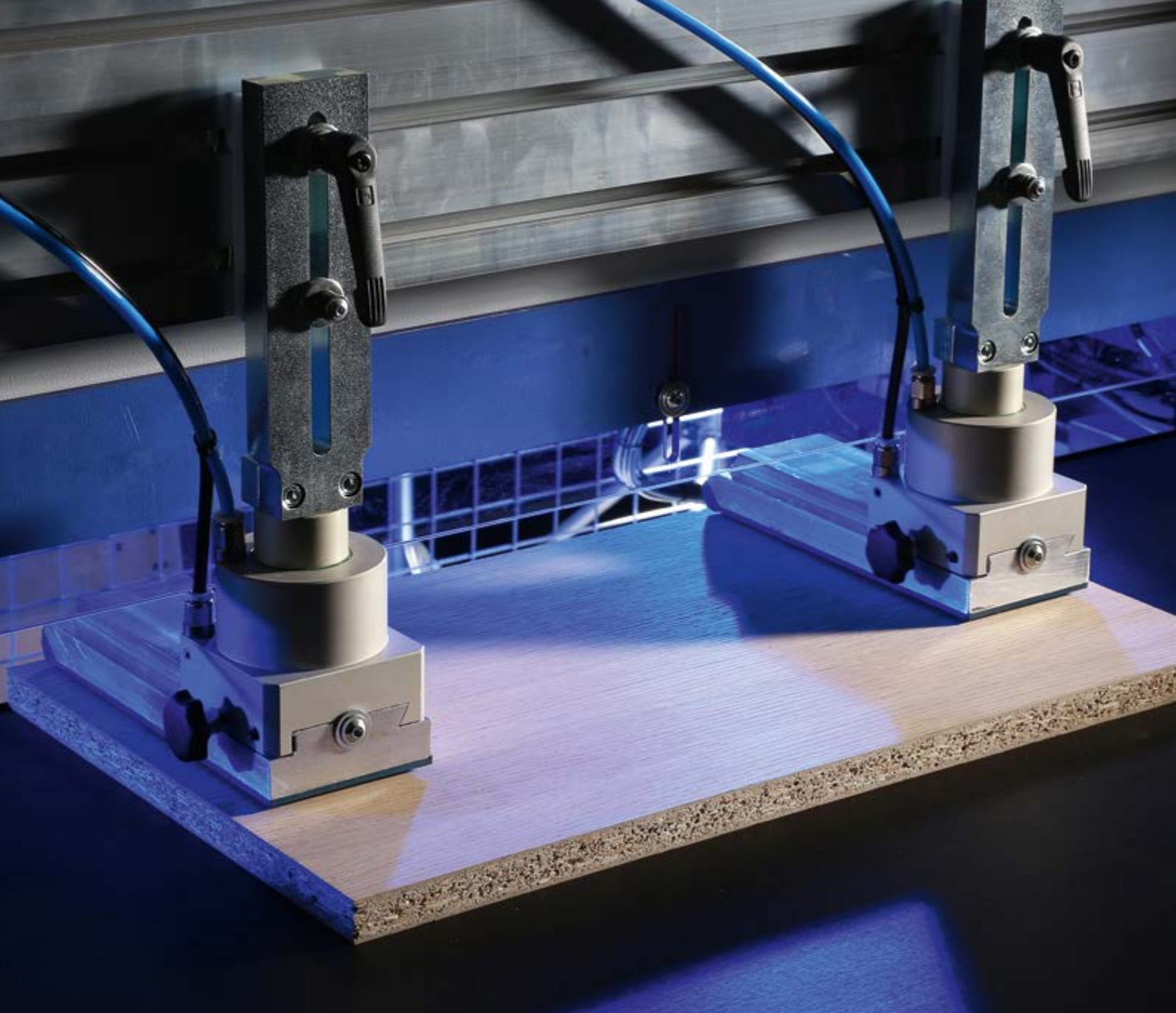
### **ESTABLISHED ALL OVER THE WORLD...**

The powerful HOMAG Group software woodWOP is already included as a standard

### **EFFICIENT...**

The quiet running low-pressure glue pump in a compact design





## All inclusive

**WITH THE ABD 260 YOU ARE PROVIDED WITH TOP-QUALITY EQUIPMENT FROM THE VERY BEGINNING.** Excellent processing quality is guaranteed in the long term by including fundamental technology already in the standard.

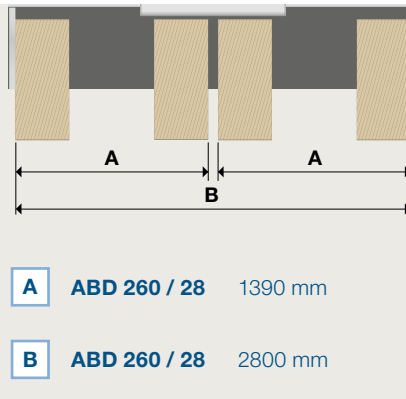
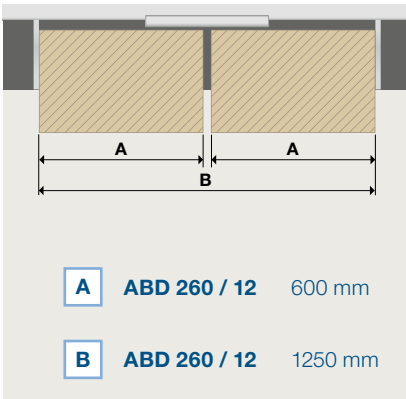




**Center stop**

- For flexible handling of workpieces
- Pneumatically lowerabler
- Manual control by (selection) switch

(pic. right) Active center stop



**Alternate operation**

- Depending on the workpiece dimensions the ABD Optimats can be fed with up to 4 workpieces



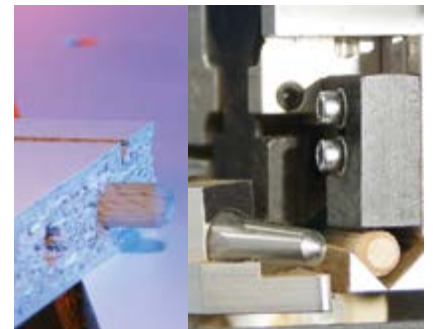
**3 horizontal drilling spindles**

- For precise processing while drilling and dowelling horizontally
- 3 individually selectable drilling spindles with 32 mm pitch



**Lateral stop**

- Pneumatically lowerabler
- Manual control by (selection) switch



**Dowelling tool with glue application**

- Glue injector with adjustable glue amount
- Glue flow control
- 32 mm distance from the drilling spindle



**3 vertical drilling spindles**

- Individually selectable drilling spindles with 32 mm pitch for diverse drill diameters up to 35 mm
- Travel range in Y-direction: 0 - 50 mm (at drill diameter up to 20 mm)



**Low-pressure glue pump**

- Double membrane pump, low-noise level and compact



**Vibrating conveyor**

- For automatic and reliable feed of standard dowels with a diameter of 5 to 12 mm and a length of 60 mm
- Other dowel dimensions on request

## Hardware – Software

**WITH THIS SOFTWARE PACKAGE YOU ARE »READY TO RACE«.** You will receive one of the most established CNC-programming systems, the woodWOP software, which has proven itself by more than 30.000 installations worldwide.

**Please use our website:  
Worldwide largest forum for woodWOP:**

**Free Download of woodWOP-components:  
[www.homag.com/Produkte/Software](http://www.homag.com/Produkte/Software)**



### **powerControl**

- 17" TFT monitor
- Provision of teleservice capability
- USB frontside bus
- Ethernet connection 10/100 Mbit



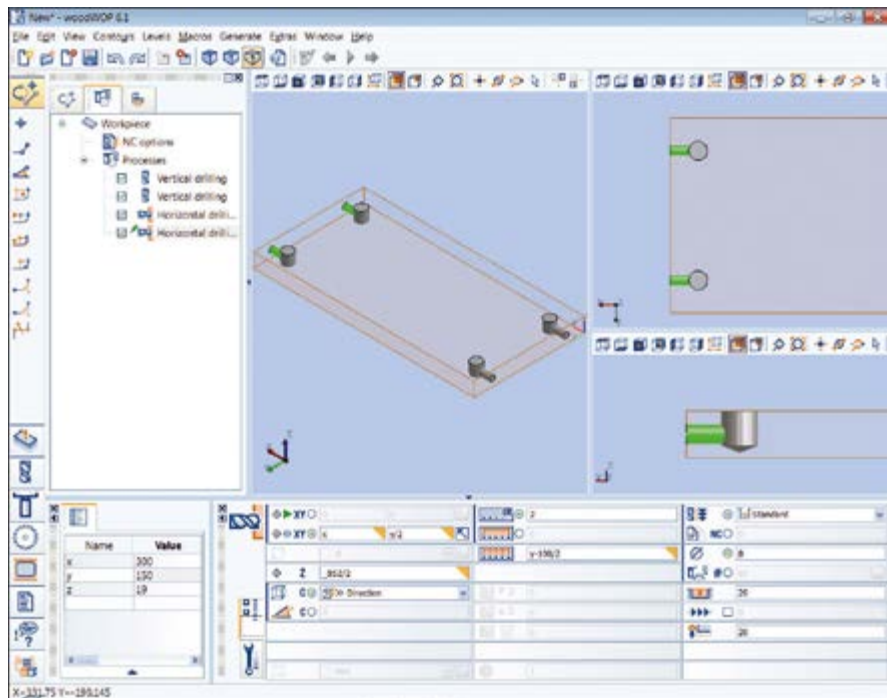
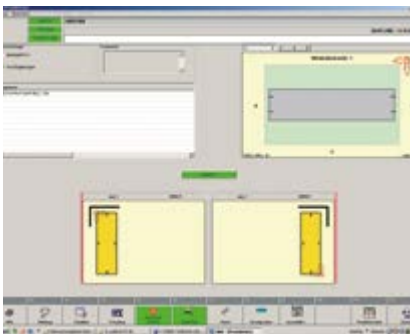
### **Bar code link (optional)**

- Barcodescanner / -software
- Supported barcodes: 1D – Barode, 2D – Data Matrix Code
- Every workpiece is exactly identified for the further workpiece flow



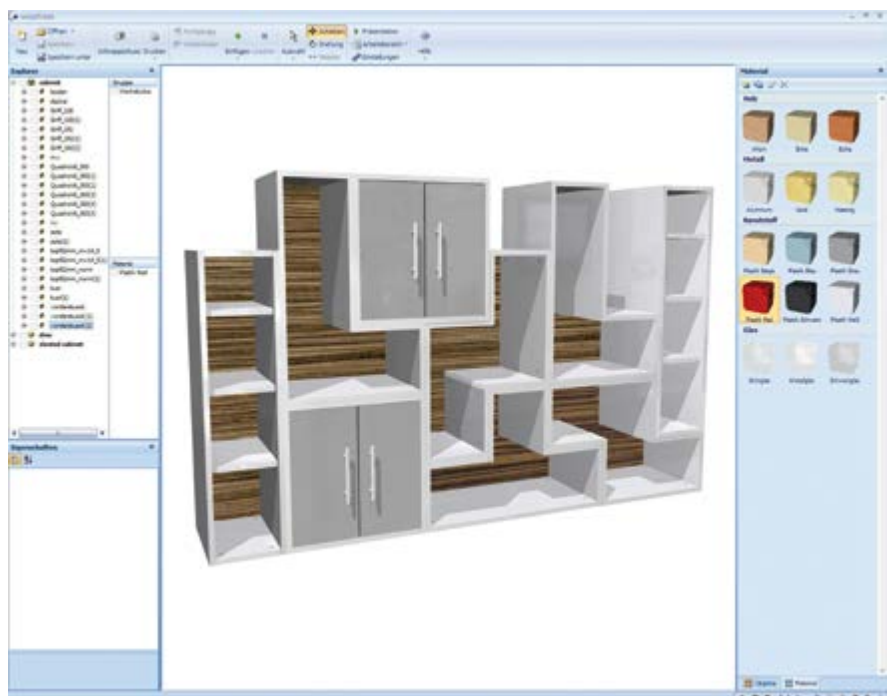
**woodWOP**

- Worldwide established CNCprogramming system – already more than 30.000 installations
- More safety and control in programming by 3D-presentations of all relevant elements



**ABD Work**

- Modern and simple control of main machine functions through soft keys
- Graphical loading



**Machine Data Recording**

- Collecting and evaluating machine states via time meter and event meter

**Further software options:**

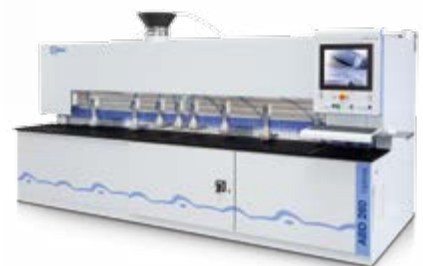
- woodWOP for external PC
- woodAssembler

# Technical data



## TECHNICAL DATA HOMAG ABD 260

WORKPIECE DIMENSIONS		ABD 260/12	ABD 260/28
Length	mm	20 – 1250	20 – 2800
Width	mm	20 – 800	20 – 800
Thickness	mm	10 – 80	10 – 80
Compressed air connection	inch	R 1/2"	R 1/2"
Compressed air	bar	min. 7	min. 7
Total connected voltage	kW	approx. 7	approx. 7
Extraction connection	mm	1 x Ø 80	1 x Ø 80
Extraction speed	m/sec.	min. 30	min. 30
Supply voltage	A	16	16
Total machine weight	kg	approx. 1600	approx. 2200



DIMENSIONS		ABD 260/12	ABD 260/28
A	mm / inch	2260 / 89.0	3810 / 150.0
B	mm / inch	1546 / 60.9	1546 / 60.9
C	mm / inch	2110 / 83.1	2110 / 83.1



**HOMAG Bohrsysteme GmbH**

Benzstraße 10-16  
33442 Herzebrock-Clarholz  
GERMANY  
Tel.: +49 5245 445-0  
info-herzebrock@homag.com  
www.homag.com



For the Success of Original  
Technology. A VDMA Campaign